



Resilience 101: Helpful Tools & Strategies for Building Community Resilience

Long Island Sound Sustainable & Resilient Communities 4th Annual Workshop

Thursday, December 4, 2025 10 AM – 12 PM



Workshop Etiquette



Please keep your
phones and
audio on mute.
Keep your
camera off too!



Workshop will
be recorded and
made available
to attendees
afterward



We will be using
interactive polls
to gather
feedback



Please use the
chat for
questions for
speakers or
technical issues

Via the web: at pollev.com/lisres



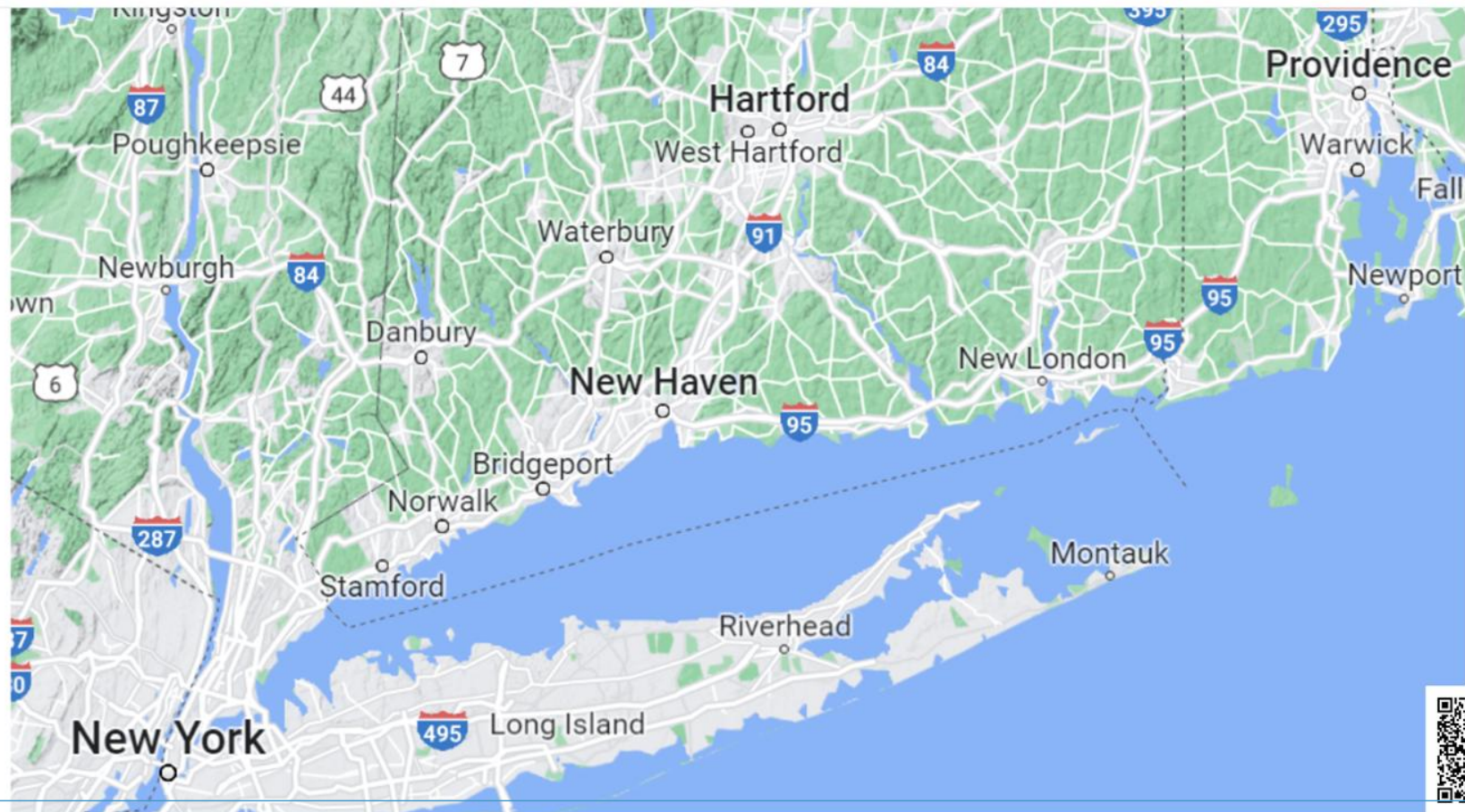
Via text message: text LISRES to 22333 to join the session. Once you receive confirmation you've joined the session, you can text the letter that corresponds with your answer.

Please note that the map only works via the web!



Poll Everywhere

Where are you joining us from today?



Please indicate the sector that best represents you:

0

Federal or state government

0

Indigenous Nation or community

0

Local government

0

Nonprofit/NGO

0

Watershed organization

0

Community group

0

Consultant

0

Academia

0

Interested individual





LONG ISLAND SOUND PARTNERSHIP

Working together to protect and restore Long Island Sound



WATERS &
WATERSHEDS



HABITATS &
WILDLIFE



RESILIENT
COMMUNITIES

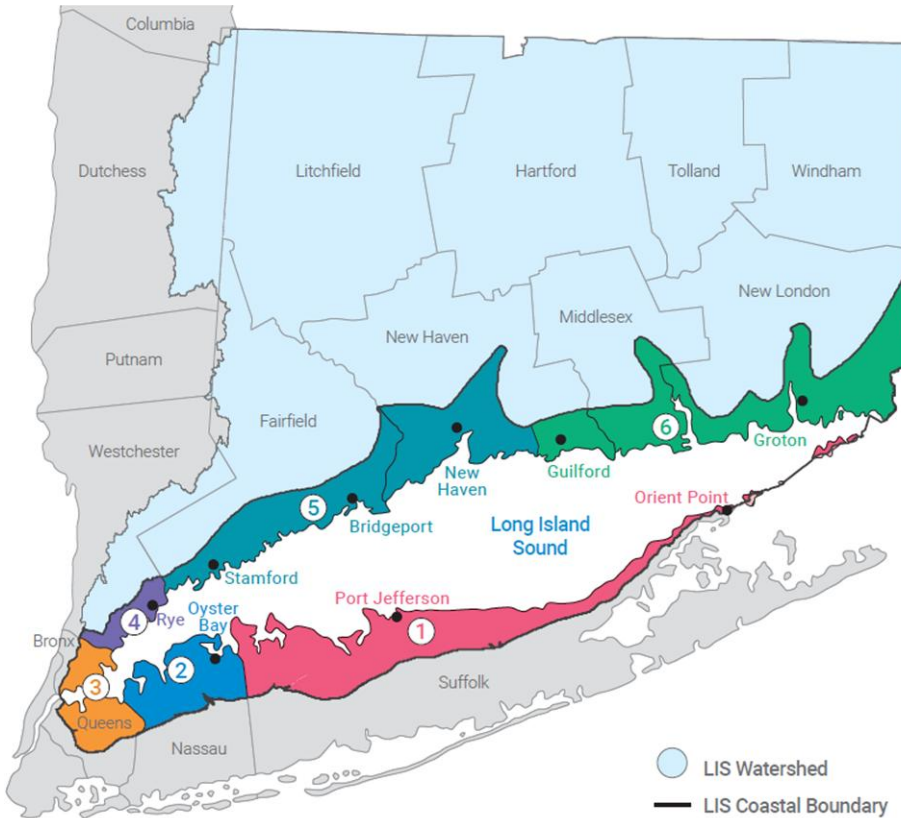


ENGAGED
PUBLIC

WHO WE ARE

The Long Island Sound Partnership is a group of organizations, agencies, scientists, and community members working together to protect and restore Long Island Sound. We support clean waters, healthy habitats, thriving wildlife, resilient coasts, and an engaged public.

The SRC Extension Professionals Team



1

Suffolk County
Elizabeth Hornstein



2

Nassau County
Sarah Schaefer-Brown



3

NYC - Bronx & Queens
Ben Goldberg



4

Westchester County
Sara Powell



5

Western CT
Deb Visco Abibou



6

Eastern CT
Sarah Schechter

Goal:

Empower Long Island Sound communities to plan for and respond to environmental challenges in ways that prioritize well-being for all.



Informed Decision-Makers

Grow the number of government, practitioner, and community leaders receiving training and support to increase their capacity to adapt to environmental challenges.



Community-Driven Resilience Planning

Increase the number of municipalities that identify key resilience priorities through local or regional community-driven planning processes.



Resilience Initiative Implementation

Implement initiatives to improve community resilience to flooding and other environmental challenges.



LONG ISLAND SOUND
PARTNERSHIP

Long Island Sound Resilience Resource Hub

www.lisresilience.org



**Finding climate
resources just
got easier**

**Your hub for Long
Island Sound Resilience
Resources is here!**

LISRESILIENCE.ORG

Goals for today's workshop session

Learn

Access tools to understand environmental risks in your region

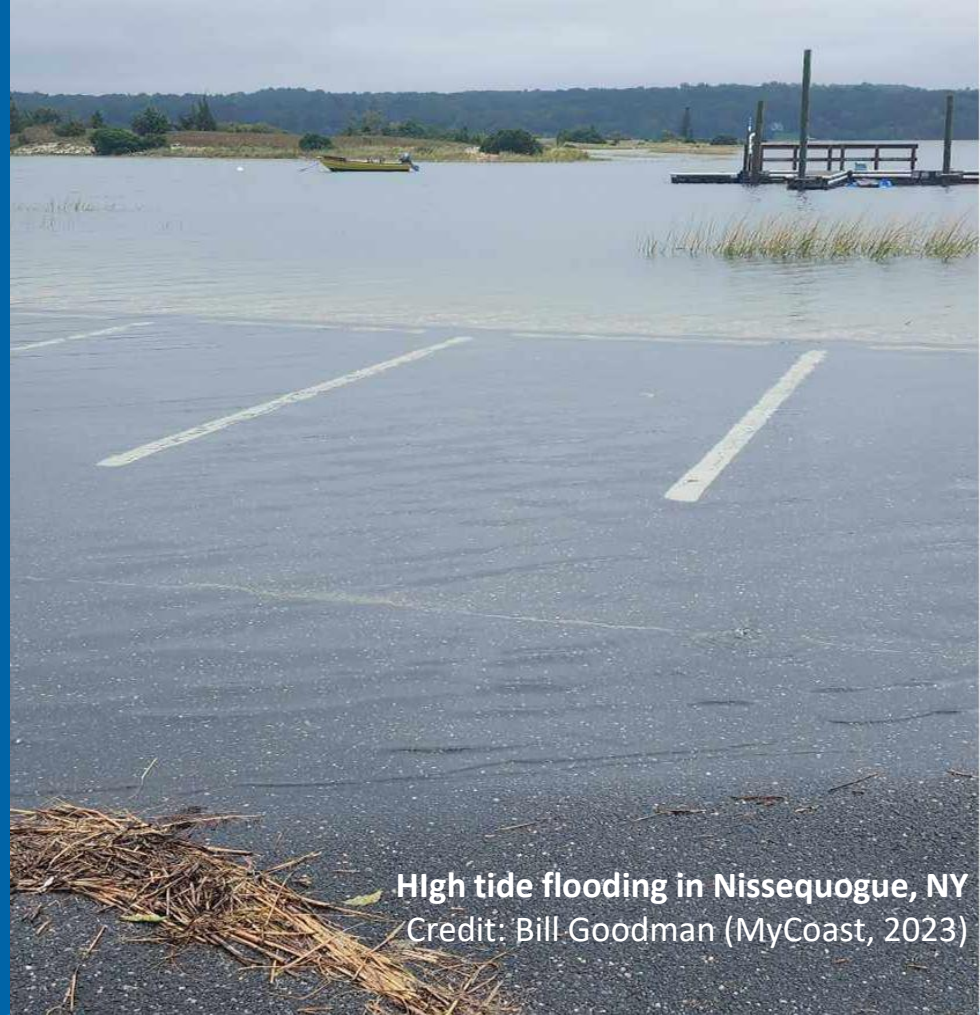
Plan

Share resilience planning and adaptation strategies

Implement

Guidance through state climate certification programs

Long Island Sound Environmental Challenges & Climate Impacts



High tide flooding in Nissequogue, NY
Credit: Bill Goodman (MyCoast, 2023)

Community Resilience Planning



LEARN

Identify
Risks



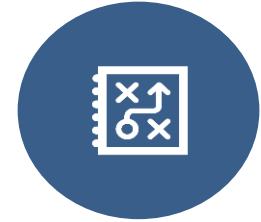
PLAN

Identify
Strategies
to Reduce
Vulnerability



IMPLEMENT

Secure Funding
to Implement
Strategies



SUSTAIN

Maintain,
Evaluate, and
Adapt

Major Impacts in Long Island Sound Region

- Increased temperature and extreme heat
- Sea level rise
- Increased frequency and intensity of extreme weather
- Increased and extreme precipitation
- Drought
- Flooding (multiple forms)
- Erosion

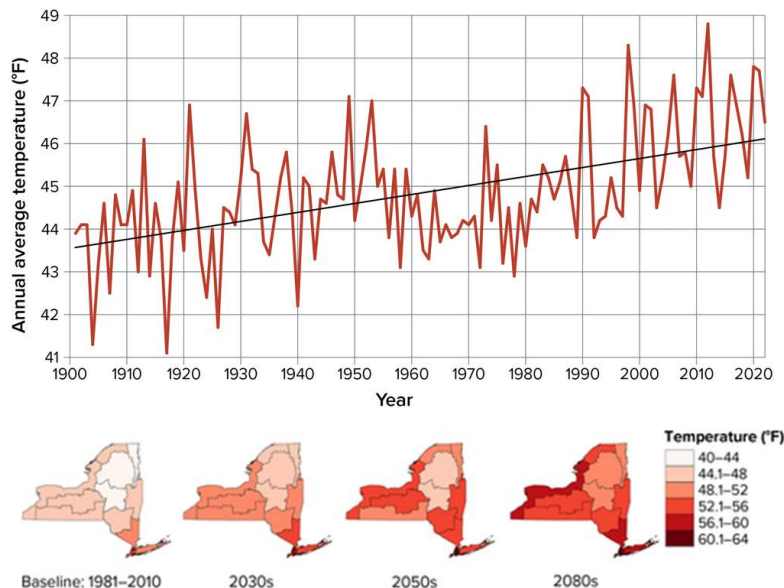


Source: Wikimedia Commons

Coastal flooding in CT during Hurricane Sandy (October 30, 2012)

Average temperatures and extreme heat are increasing

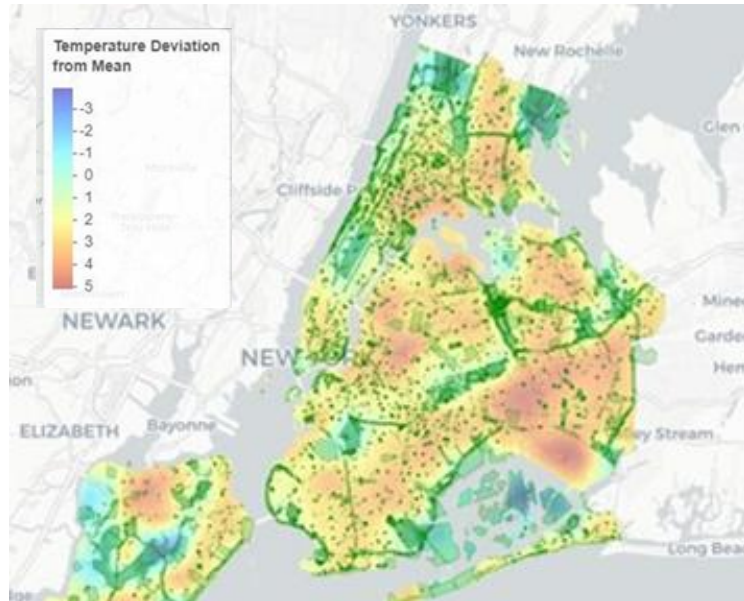
Observed & projected temperature increases in NYS



Source: NYS Climate Impacts Assessment (2024)

- Heatwaves more frequent and lasting longer
- By 2050s, days with heat index values **>100°F** increase threefold
- In NYS, 5-9 heatwaves per year by 2050s and 6-10 by 2080s, lasting 5-8 days

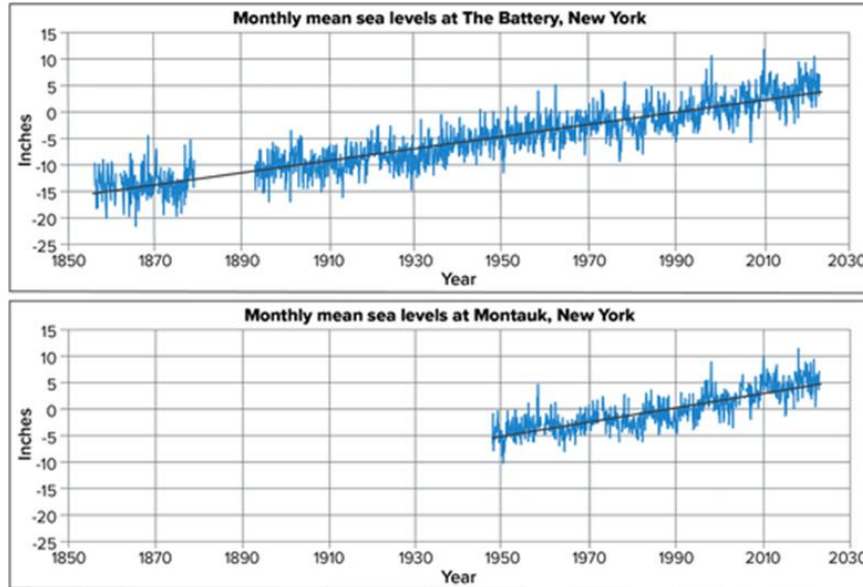
Extreme Heat and Urban Heat Island Effect



Land Surface Temperature Differences in NYC.
Image Source: USGS (2019)

- **Urban heat island effect:** concrete, asphalt, and buildings trap and absorb heat
- Temperature differences due to amount of impervious surface and lack of green space

Sea levels are rising

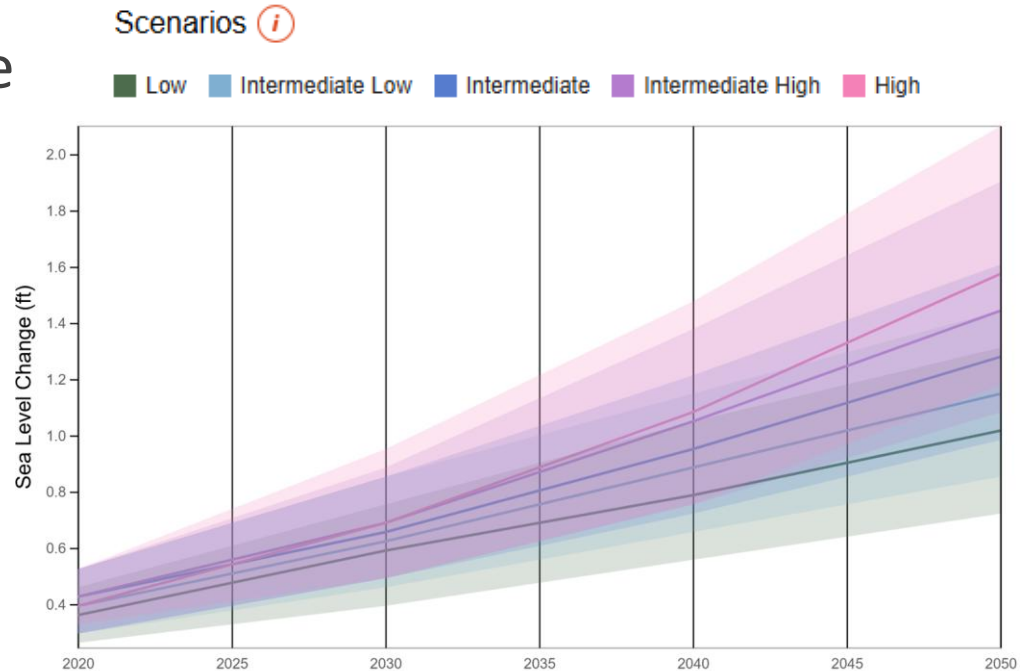


Relative SLR at The Battery, NYC and Montauk, NY (Source: NYS Climate Impacts Assessment)

- In NYC, sea level increased by about **1 foot** in last century
- Rate of sea level rise (SLR) accelerating in recent years
- Rate of SLR in LIS region is roughly **double** the global average

Sea level will continue to rise

- Sea level is expected to rise by **another 10-11 inches** by 2050
- SLR will continue, reaching ~4 feet by 2100
- Regular **tidal flooding** to become more frequent



Sea Level Rise for Bridgeport from 2020 - 2050 (Source: National Sea Level Explorer, 2022 Interagency Technical Report)

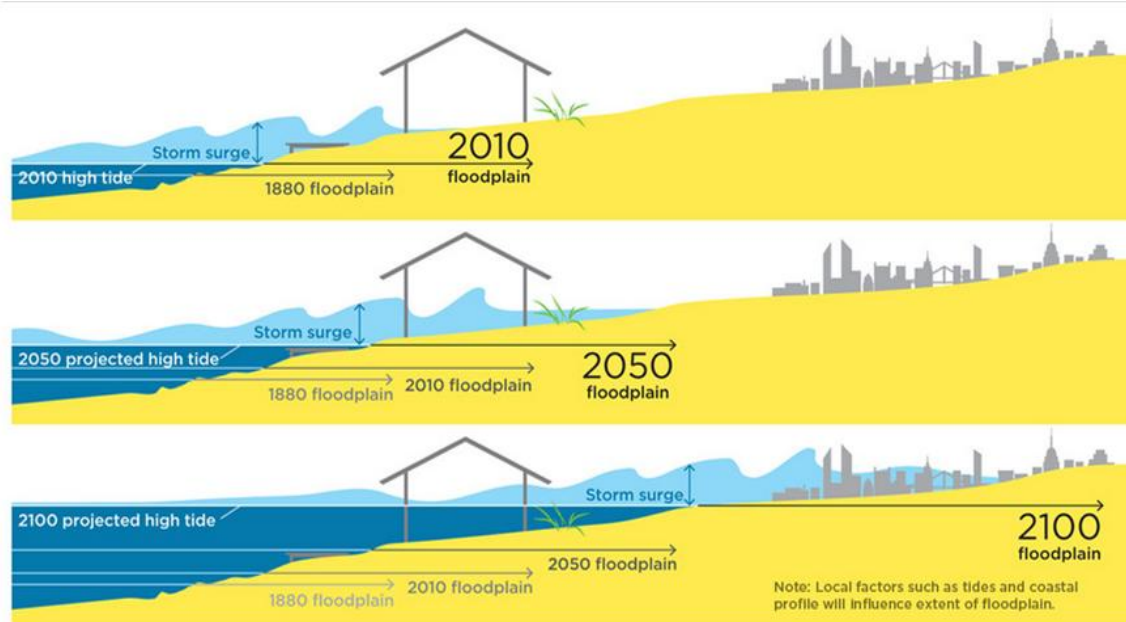
Extreme weather events are becoming more frequent and severe



In the 1980s, the U.S. experienced (on average) one [inflation-adjusted] billion-dollar weather disaster every four months. Now there is one every three weeks.

Source: USGCRP, 2023

SLR amplifies storm surge risk



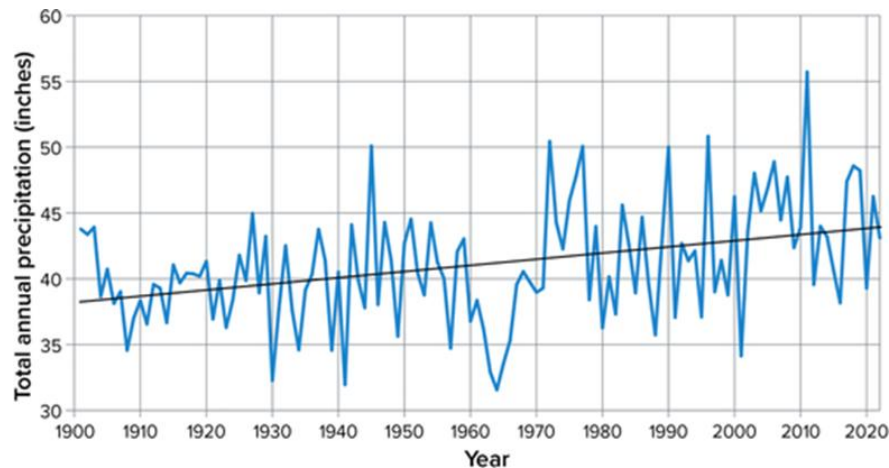
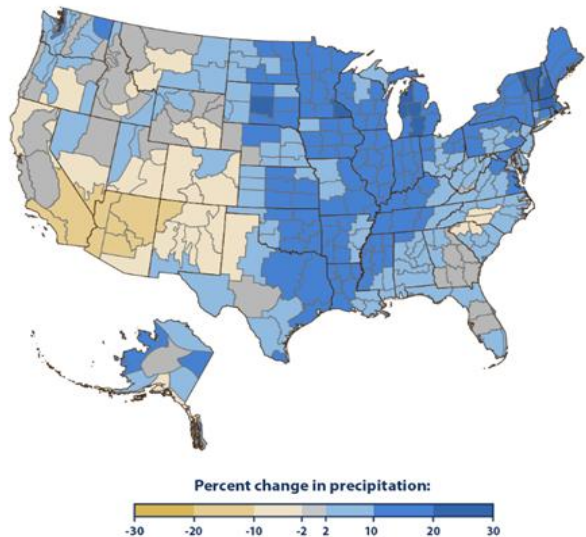
Storm surge and high tides magnify the risks of local sea level rise.

Source: Union of Concerned Scientists, 2013

- Storm surge and **coastal flooding** to become more severe
- The greatest damage from hurricanes comes from **storm surge**
- A higher baseline sea level means that storm surge will **penetrate farther inland**

Total amount of precipitation is increasing in Northeast

Change in total annual precipitation in US, 1901–2023 (Source: EPA)



Increase in total annual precipitation in NYS, 1901–2022, +0.47 inches per decade (Source: NYS Climate Impacts Assessment)

change (percent)

0 10 20 30 40

In NYC, the four storms with the **highest hourly rainfall rates** in last 50 years have occurred since **2021**:

- September 1, 2021 (Hurricane Ida): **3.47"**
 - July 14, 2025: **2.08"**
 - September 29, 2023: **1.87"**
 - August 21, 2021 (Hurricane Henri): **1.84"**
- Sources: NOAA, NYC DEP

Stormwater infrastructure often cannot handle intense rainfall

Older stormwater systems were not designed to handle today's storms and become overloaded quickly



Flooding in Mamaroneck, NY

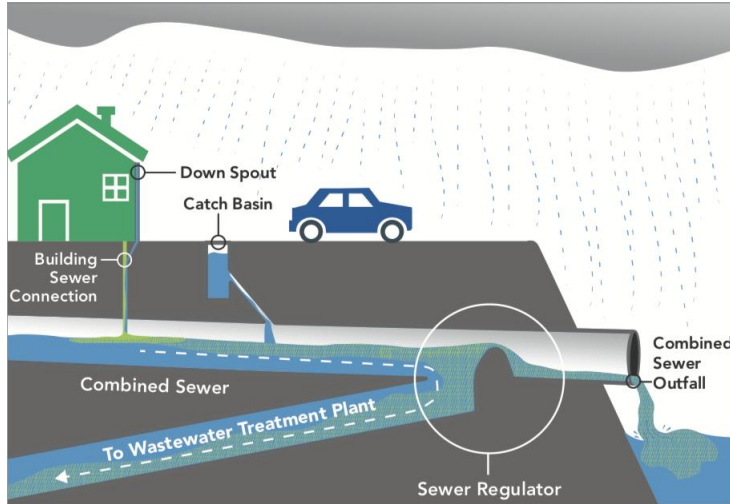
Source: MyCoast



Combined sewer overflow in West Haven, CT

Credit: Christopher Zurcher

Extreme rainfall can negatively impact water quality



Combined sewer overflow (CSO) when heavy rainfalls exceed sewer capacity
Source: NYC DEP



Runoff from heavy rains in Connecticut River post-Hurricane Irene, 2011
Source: USGS





Tools for Assessing Your Community's Risks and Vulnerabilities



Existing Conditions



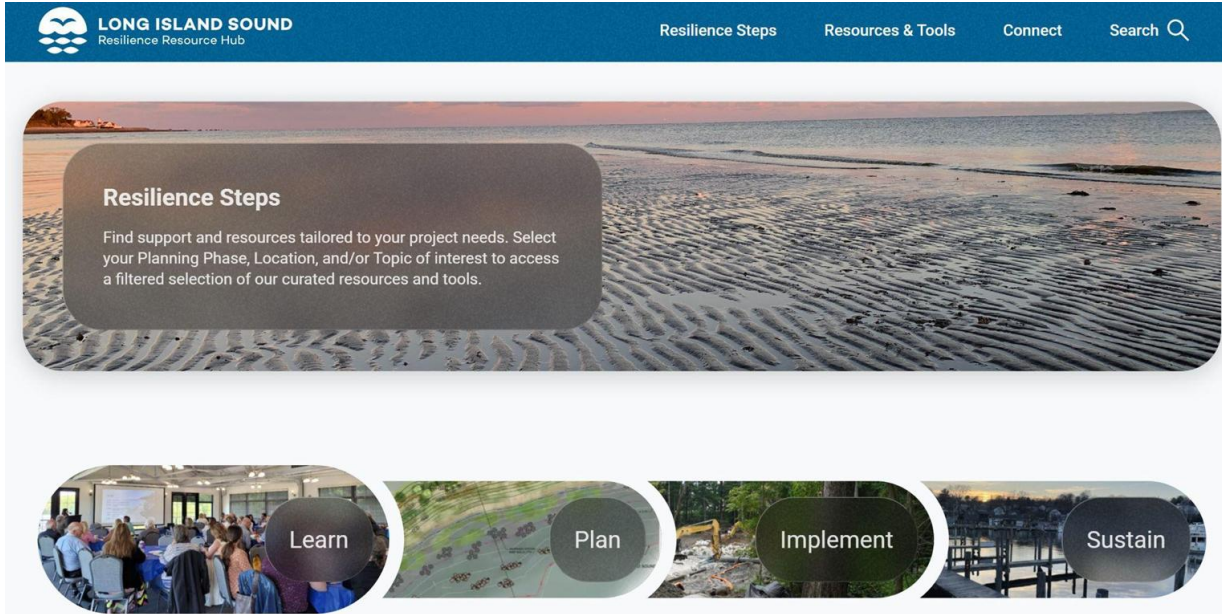
Increasing Hazards



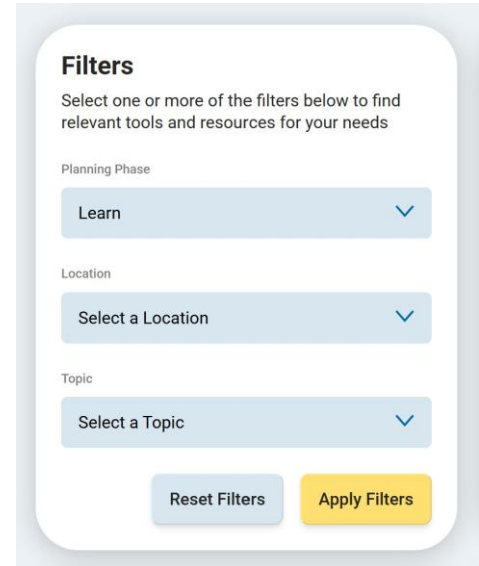
Source: Fifth National Climate Assessment



LIS Resilience Resource Hub



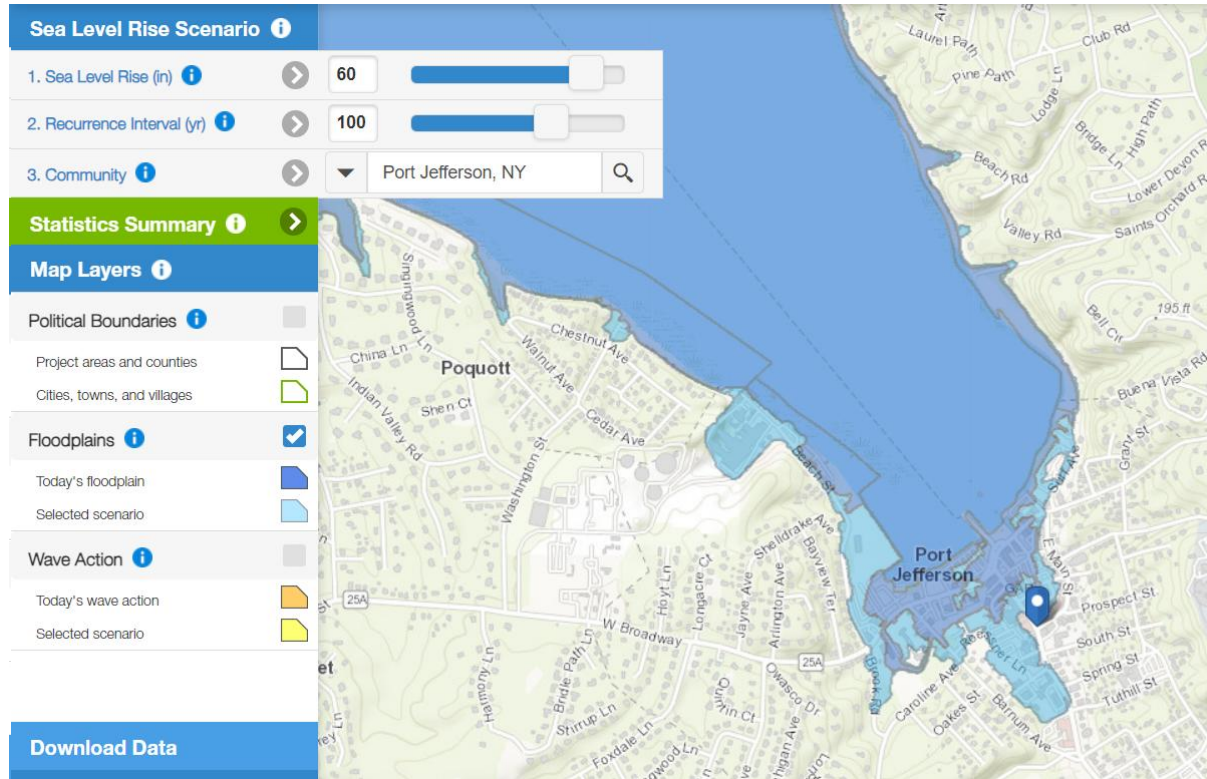
The screenshot shows the homepage of the Long Island Sound Resilience Resource Hub. The header features the LIS logo and navigation links for Resilience Steps, Resources & Tools, Connect, and a Search function. A large banner image of a beach at sunset contains a 'Resilience Steps' section with a description: 'Find support and resources tailored to your project needs. Select your Planning Phase, Location, and/or Topic of interest to access a filtered selection of our curated resources and tools.' Below the banner is a horizontal row of five circular icons representing the resilience process: Learn (meeting), Plan (map), Implement (excavator), and Sustain (pier).



The filters sidebar on the right side of the website allows users to refine their search. It includes a 'Filters' title, a selection instruction, and three dropdown menus for 'Planning Phase' (set to 'Learn'), 'Location' (set to 'Select a Location'), and 'Topic' (set to 'Select a Topic'). At the bottom are 'Reset Filters' and 'Apply Filters' buttons.

www.lisresilience.org

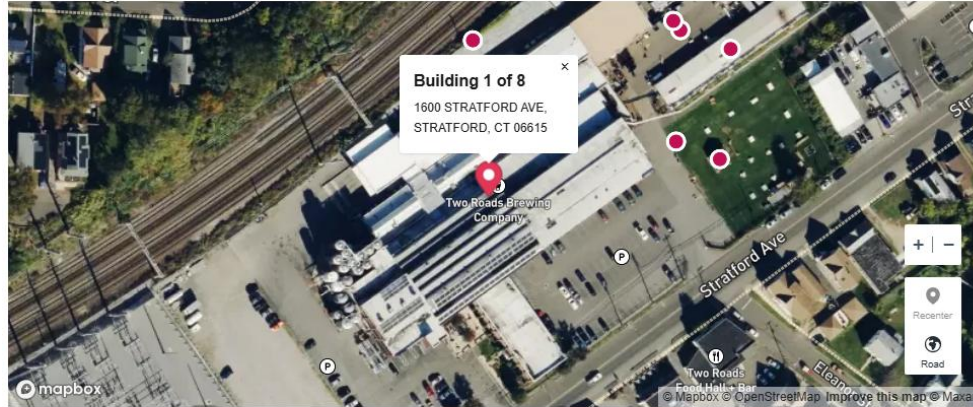
New York State Sea Level Rise Viewer – Port Jefferson, NY



Climate Risk Mapping Tool for Connecticut Residents – Stratford, CT

1600 STRATFORD AVE, STRATFORD, CT 06615
BUILDING 1 OF 8

Edit Building Details Save as PDF Share Map View



6/10 Flood Factor 1/10 Fire Factor 6/10 Wind Factor 4/10 Air Factor
6/10 Heat Factor

Key Insights for This Property

- 3 historic floods have been recorded in this area.
- This property has significant flood insurance considerations.

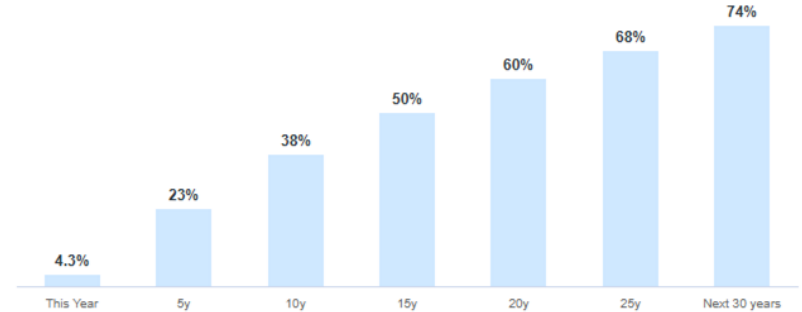
Climate Risk Report

You're able to access this complete climate risk report as part of your subscription.

Understand this property's risk

- Provide property report access to others

Cumulative risk of 1 in of flooding reaching the building



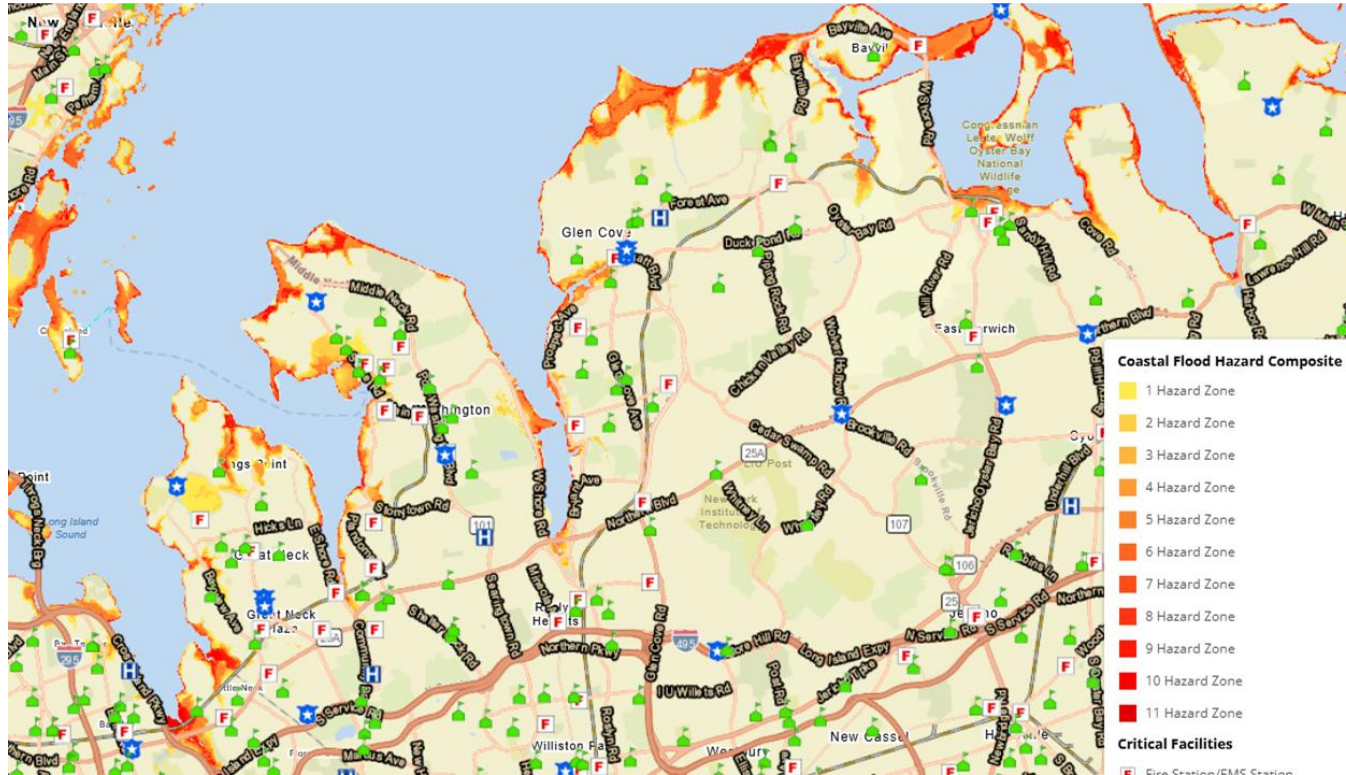
Flood Damage Forecast

Flood Insurance & FEMA Zone

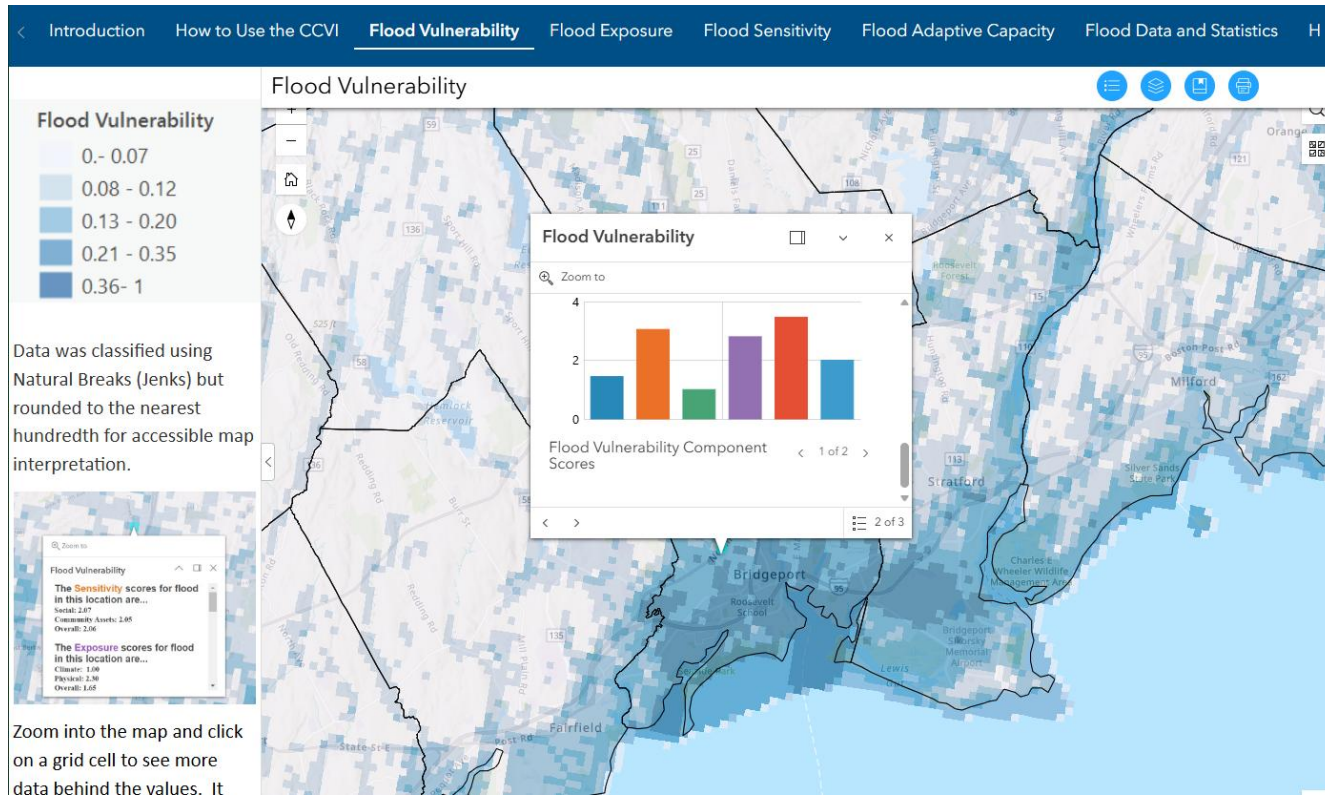
Flood Damage Preventions

Elevating a Building

NOAA Coastal Flood Exposure Mapper – Nassau County, NY



CIRCA Climate Change Vulnerability Index – Bridgeport, CT



Tools for Risk & Vulnerability Assessment

NYC Flood Hazard Mapper



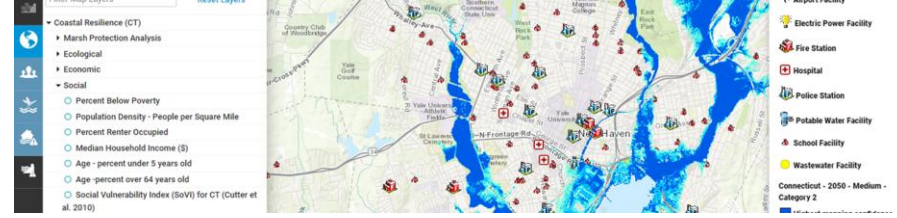
NYC Stormwater Flood Maps



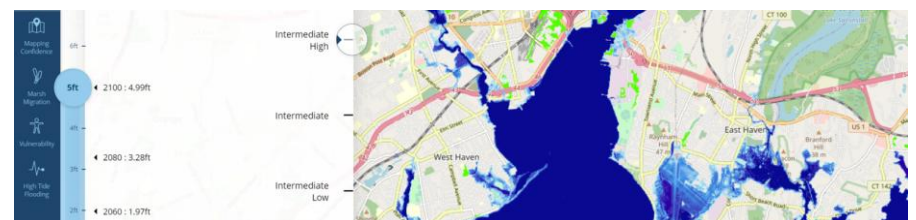
CIRCA Sea Level Rise & Storm Surge Viewer



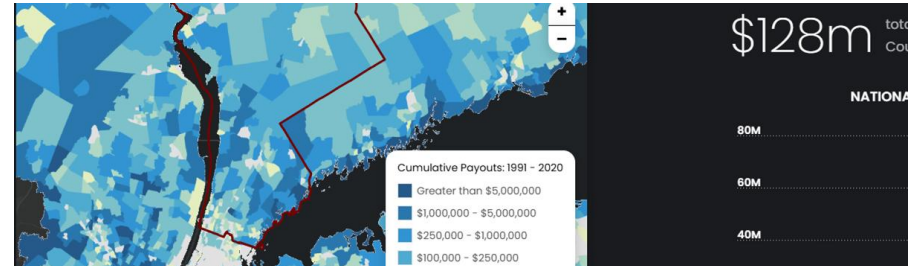
TNC Coastal Resilience Tool



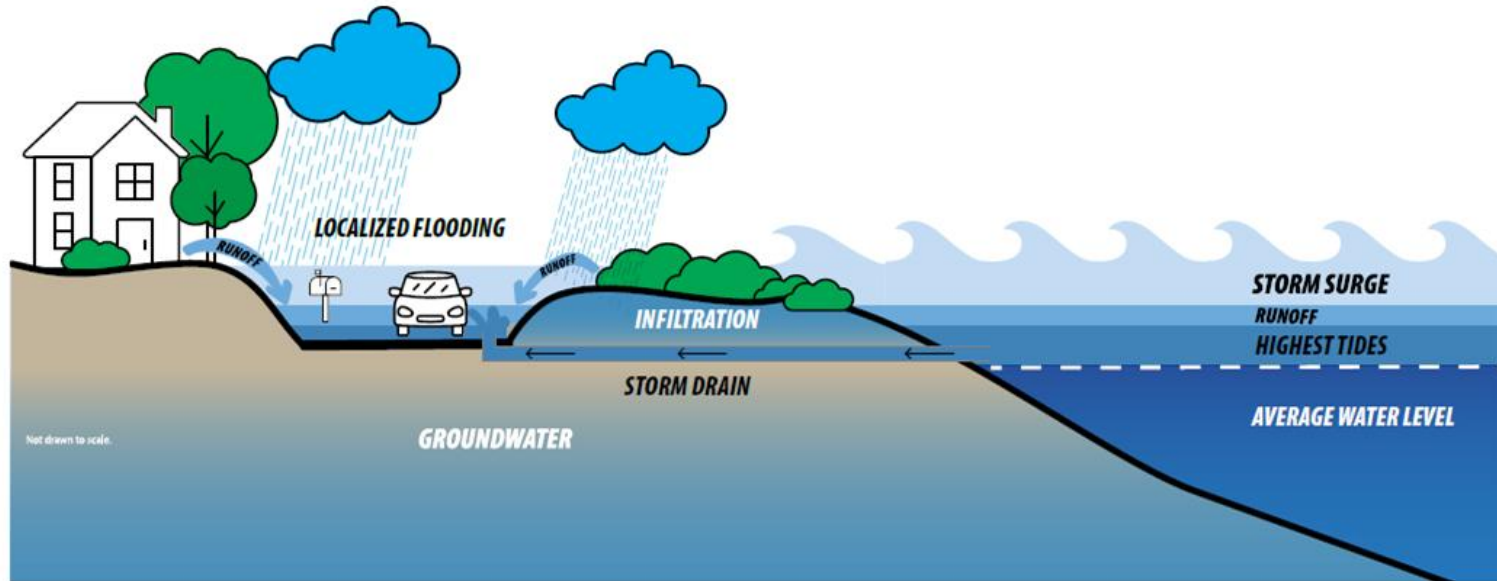
NOAA Sea Level Rise Viewer



NOAA Coastal County Snapshots



Compound Flooding

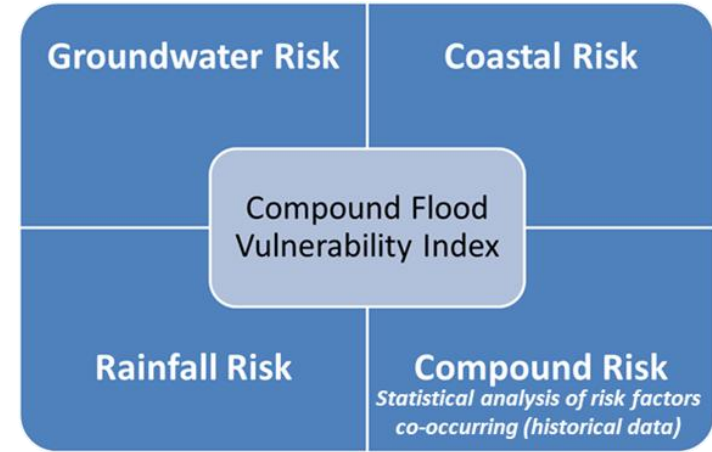
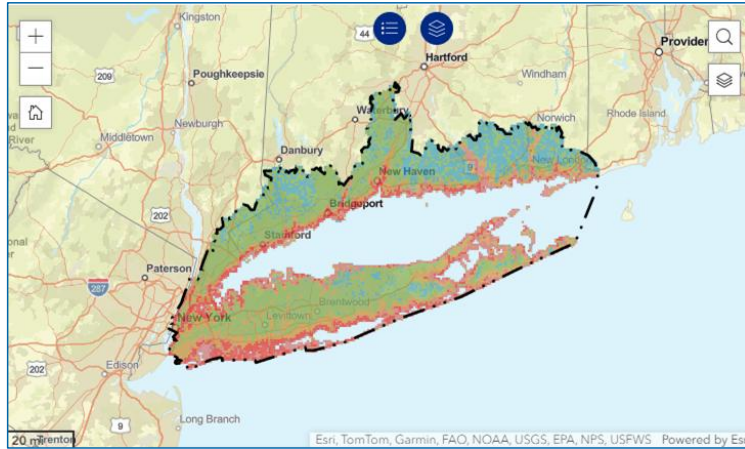


Source: New York Sea Grant

Tools for Risk & Vulnerability Assessment

USGS Compound Flood Hazard Model

Preliminary Information-Subject to Revision.
Not for Citation or Distribution



MyCoast CT & NY

 MyCoast [NY MyCoast](#) [Flood Watch](#) [Storm Reporter](#) [CoastSnap](#) [Litter Watch](#) [Search Reports](#) [Download App](#) [Log In](#) [Register](#) [More...](#)

MyCoast:
New York
Help document New York's changing water levels and weather impacts




The MyCoast New York portal is used to collect and analyze photos of changing water levels, shorelines, and hazardous weather impacts across New York's varied coasts and water bodies. Photos are linked to real-time environmental conditions to create reports that help stakeholders like government agencies, business owners, and residents understand our changing environment.



 MyCoast [CT MyCoast](#) [Storm Reporter](#) [High Tides](#) [Search Reports](#) [Download App](#) [Log In](#) [Register](#) [More...](#)

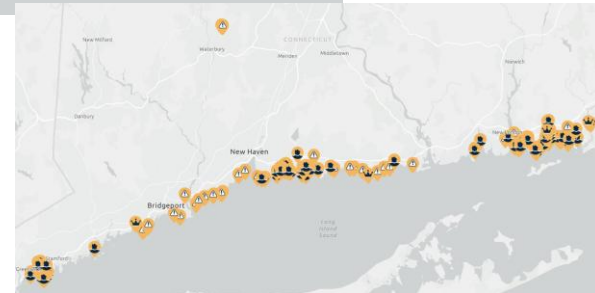
MyCoast:
Connecticut
Join a pilot project for New London, Groton, and Stonington

MyCoast A Pilot for Groton, New London, and Stonington invites residents to take photos of high tides, flooding, and storm damage. Submit your photos to support local planning, increase awareness, and build a stronger, more resilient shoreline for all. Help create an important record of how your community experiences coastal flooding and storm events.

For project updates, please visit the [Connecticut Sea Grant MyCoast Homepage](#).

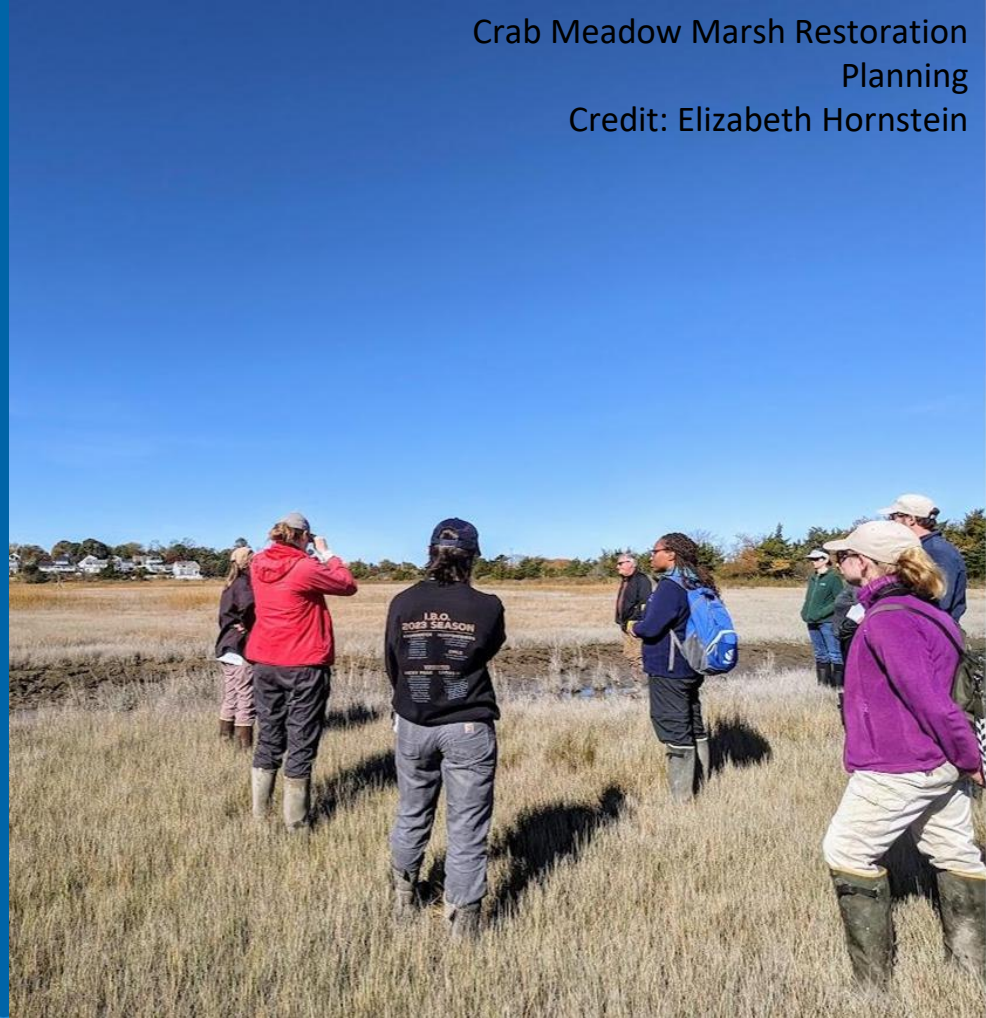
  

	
High Tide Flooding Capturing the Location & Extent of Tidal Flooding	Storm Reporter Capturing Damage from Storms



Resilience Planning Adaptation Strategies

Crab Meadow Marsh Restoration
Planning
Credit: Elizabeth Hornstein



Community Resilience Planning



LEARN

Identify
Risks



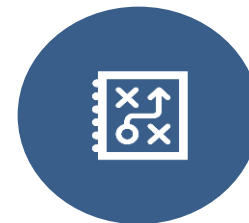
PLAN

Identify
Strategies
to Reduce
Vulnerability



IMPLEMENT

Secure Funding
to Implement
Strategies



SUSTAIN

Maintain,
Evaluate, and
Adapt

How familiar are you with resilience planning?



Not very - I'm aware of climate impacts in my community, but am new to resilience planning.

0

Somewhat - I have looked into available resources and/or am currently aware of planning happening in my community, but want to learn more.

0

Very familiar - I'm engaged with planning efforts in my community but am excited to learn new things today.

0





General Adaptation Strategies:

- Raise Awareness
- Plan & Enforce
- Conserve & Restore
- Accommodate
- Relocate
- Defend
- Do Nothing

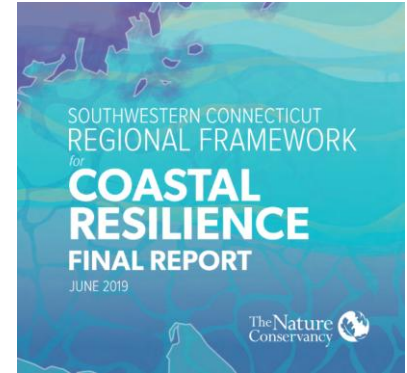
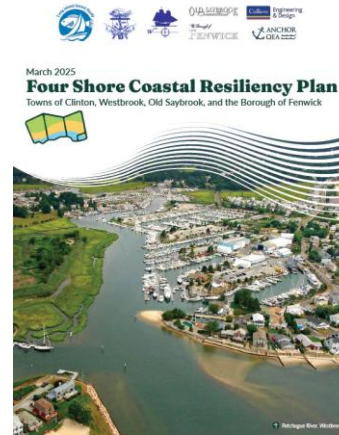
Kathleen M. Fallon, Ph.D.
Coastal Processes & Hazards Specialist
kmf228@cornell.edu



September 2024

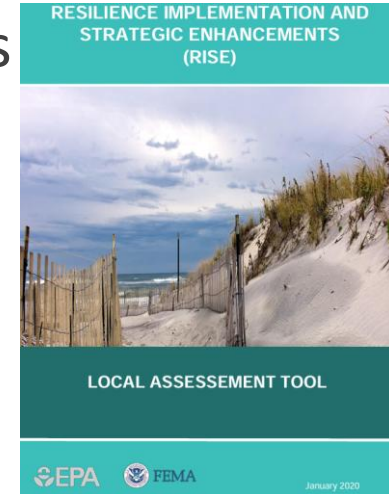
Develop and Update Plans

- Incorporate climate impacts into all municipal/community plans
- Consider undertaking a Climate Vulnerability Assessment and Adaptation Plan
- Consider collaborating with neighboring communities
- Make sure to have emergency response plans!



Strengthen & Enforce Regulations and Policies

- Update zoning codes to ensure future infrastructure is located outside hazard areas
- Strengthen wetland and shoreline management codes
 - Increase coastal setbacks
- Strengthen stormwater control measures
- Incentivize nature-based solutions
- Establish resilience financing mechanisms
 - CT Climate Resilience Improvement Districts (RIDs)
 - Stormwater Utilities



NYS Model Local Laws to Increase Resilience



<https://dos.ny.gov/model-local-laws-increase-resilience>

Upgrade, relocate, or remove at risk infrastructure

Roadways, Crossings, and Dams



Photo Credit:
MyCoast CT

Guilford, CT



Photo Credit:
Sarah Schaefer-Brown

Beaver Brook Culvert, Mill
Neck, NY

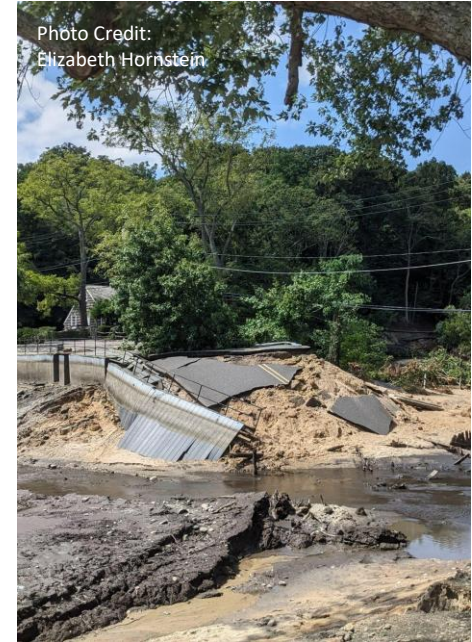


Photo Credit:
Elizabeth Hornstein

Mill Pond Dam & Harbor Road in Stony
Brook, NY

Upgrade, relocate, or remove at risk infrastructure

Stormwater and Wastewater Infrastructure



Photo Credit:
Elizabeth Hornstein

Stormwater Infrastructure
Brookhaven, NY



Photo Credit:
Elizabeth Hornstein

Overflowing
stormwater drain in
Port Jefferson, NY



Photo Credit:
Jim Ammerman/lisp

A house in Centerport Harbor, NY gets
an enhanced nitrogen removal septic
system to replace a cesspool.

Upgrade, relocate, or remove at risk infrastructure

Housing, businesses, and other critical infrastructure



New Rochelle, NY



Groton Long Point Police Station,
CT



Crumbling sea wall, Centerport, NY

Natural and Nature-Based Solutions

Preserve/restore natural defenses, such as beaches, dunes, coastal bluffs, wetlands, seagrass beds, and oyster reefs

Photo Credit:
Sarah Schaefer-Brown



Marsh Conservation Planning, Cold Spring Harbor, NY

Photo Credit:
Elizabeth Hornstein



Bluff Restoration, Riverhead, NY

Photo Credit:
Deb Visco Abibou



Dodge Paddock and Beal Preserve, Stonington, CT

Natural and Nature-Based Solutions *Living Shorelines*



Fenwick, CT Living Shoreline (L) and Artificial Shellfish Reefs at Stratford Point, CT (R)

Natural and Nature-Based Solutions

Riparian Buffers & Reforestation



Otter Creek Forest Restoration,
Mamaroneck, NY



Vegetative buffer along Niantic Bay,
CT



Hoffman Evergreen Preserve
Restoration, Stonington, CT

Natural and Nature-Based Solutions *Green Infrastructure*



Photo Credit:
Vicky O'Neill

Constructed stormwater wetland at
Sunken Meadow State Park, NY



Photo Credit:
Deb Visco Abibou

Bioswale in New Haven, CT

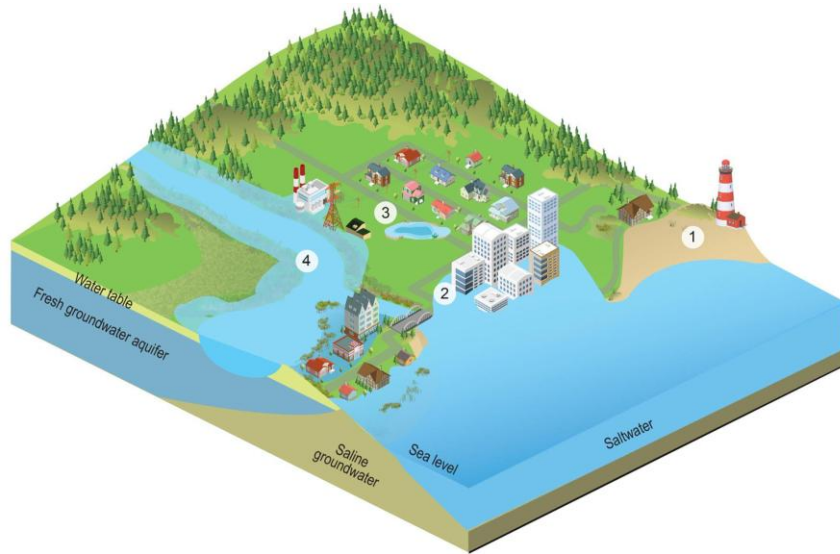


Photo Credit:
Sarah Schaefer-Brown

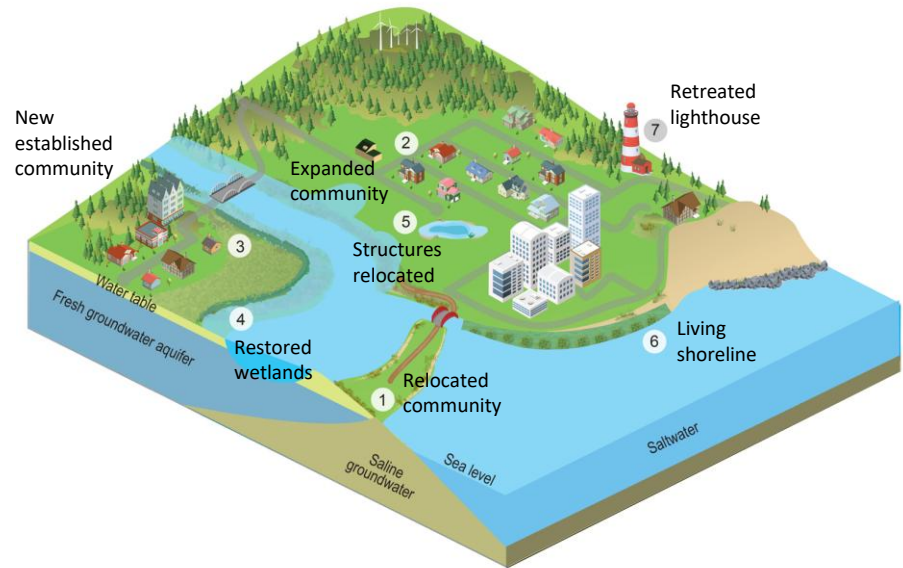
Rain Garden at Bay Walk Park, Village
of Port Washington North, NY

Adaptation Strategies for a Coastal Community

Increasing hazards in a coastal community




Adaptation strategies



Source: Fifth National Climate Assessment

From Idea to Implementation: Use our guiding criteria to identify, prioritize, and implement impactful strategies and projects



A Guide to Resilience Planning

Use the PERSISTS criteria below to help identify, prioritize, and implement high-impact projects

PERSISTS Framework adapted and adopted from Connecticut Institute for Resilience and Climate Adaptation. (2020). Resilient Connecticut Planning Framework.

P

Permittable

E

Engaged

R

Realistic

S

Safe

I

Innovative

S

Scientific

T

Transferable

S

Sustainable



A Guide to Resilience Planning for Long Island Sound Communities

MOVE PROJECTS FROM IDEA TO IMPLEMENTATION

PERSISTS Decision Support Criteria

Permittable – Can get all necessary permits and/or permissions

Engaged – Considers input from and impacts to all communities

Realistic – Has community support and can be realistically achieved

Safe – Enhances or maintains the wellbeing of communities

Innovative – Process has considered innovative options including nature-based solutions

Scientific – Incorporates the best available science

Transferable – Can serve as model for other communities

Sustainable – Socially, economically, and ecologically sustainable

*Adapted and adopted from Connecticut Institute for Resilience and Climate Adaptation. (2020). [*Resilient Connecticut Planning Framework*](#).

Resilience Planning Guide

Engaged

Considers input from and impacts to all communities

- ☒ Have you considered best practices for making your decision-making and engagement processes transparent and open?
- ☒ Have you incorporated the viewpoints of various local community organizations, leaders, and members throughout all phases of project development?
- ☒ Does the project consider and avoid unintended or unanticipated impacts to neighboring communities?
- ☒ Does the project reduce risk and/or provide benefits to distressed communities?

[View Related Resources](#)

Scientific

Incorporates the best available science

- ☒ Has the best available science, data, technology, and local knowledge for your area been considered (including future conditions)?
- ☒ Have relevant experts been involved in developing the strategy or project?
- ☒ Have you engaged with the appropriate entities to understand appropriate data collection protocols (e.g., QAPPs) and design standards?

[View Related Resources](#)

Sustainable

Socially, economically, and ecologically sustainable

- ☒ How does the project enhance Long Island Sound communities and ecosystems?
- ☒ Will the project withstand future climate impacts and disturbances?
- ☒ Have you considered how the project fits into local and/or regional sustainability and resilience plans and goals?
- ☒ Are there resources and commitments in place to maintain the project, conduct any necessary post-project monitoring, and adapt as needed?
- ☒ Have you quantified the long-term social, ecological, and economic benefits of the project relative to the cost?

[View Related Resources](#)

Case Studies



Filters

Select one or more of the filters below to find relevant tools and resources for your needs

Location

Select a Location

Topic

Select a Topic

Reset Filters

Apply Filters

Need help deciding where to start?

Learn how to identify, prioritize, and implement high-impact projects

[View Resilience Planning Guide](#)

Funding Database

Find funding for your project

[View Funding Database](#)

[Case Study](#) [Project](#)

Rye, NY

Edith G. Read Wildlife Sanctuary Living Shoreline

Shoreline erosion problems had been noted at Edith G. Read Wildlife Sanctuary in Rye, NY in the early 2000s, and after the devastation caused by Hurricane Sandy in 2012 and subsequent storms, it was clear there was a...

New York State

[Habitat](#)

[Community Engagement](#)

[Wetlands](#)

[View Details](#)

[Case Study](#) [Project](#)

Halesite, NY

Halesite Park Shoreline Restoration

With support from the [Long Island Sound Resilience Grant Writing Assistance Program](#), in December 2024 1653 Foundation was awarded \$549,955 from the NYSDDEC Water Quality Improvement Project (WQIP) Program to fund the...

New York State

[Erosion](#)

[Habitat](#)

[Land Use](#)

[Nature-based Solutions](#)

[Stormwater Management](#)

[Water Quality](#)

[Recreation & Access](#)

[Wetlands](#)

[Green Infrastructure](#)

[View Details](#)

[Case Study](#) [Plan](#)

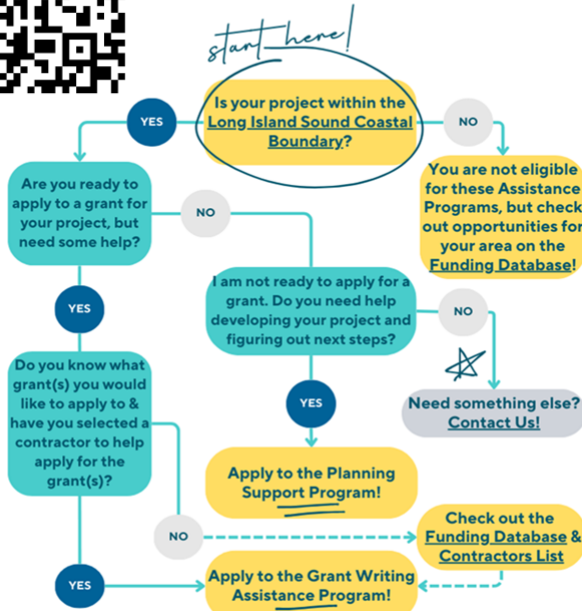
Old Saybrook, CT

Planning to Restore Chalker and Chanman Beach

SRC Resilience Assistance Programs

What Assistance Program is right for me?

Click on the image to interact



LIS Resilience Planning Support Program

Focus: Planning,
Preliminary Design, and
Project Scoping

No Match!

Eligible Applicants:
Municipalities, Nonprofits,
Community Organizations

*3rd round released
December 1, 2025!*

LIS Resilience Grant Writing Assistance Program

Focus: Grant Preparation and
Writing

No Match!

Eligible Applicants:
Municipalities, Nonprofits,
Community Organizations

*Rolling: Open until all available
funding has been allocated*

Funding Database

Filters

Select one or more of the filters below to find relevant tools and resources for your needs

Status

Select a Status

Planning Phase

Select a Planning Phase

Location

Select a Location

Topic

Select a Topic

Eligibility

Select an Applicant Type

Reset Filters

Apply Filters

Need help deciding where to start?

Learn how to identify, prioritize, and implement high-impact projects

[View Resilience Planning Guide](#)

Case Studies

See how other communities are building climate resilience

[View Case Studies](#)

 Funding

 Open: Due on Dec 15, 2025

12 days
remaining to apply

min \$250,000 (no max)

Community Investment Fund (CIF) 2030 – Round 8

The Community Investment Fund 2030 (CIF) will foster economic development in historically underserved communities across Connecticut. CIF will provide a total of up to \$875 million to eligible municipalities as well...

Connecticut State

Economic Impacts

Infrastructure

Planning

Community Engagement

[View Details](#)

 Funding

 Open: Due on Dec 16, 2025

13 days
remaining to apply

\$100K – \$1.5M

CT DEEP Long Island Sound Ecosystems Grant

The Connecticut Department of Energy and Environmental Protection's (DEEP's) Land and Water Resources Division requests proposals for the new CT DEEP Long Island Sound Ecosystems Grant, made possible by financial...

Connecticut State

Flooding

Habitat

Nature-based Solutions

Stormwater Management

Water Quality

Planning

Wetlands

Green Infrastructure

[View Details](#)

 Funding

 Open: Due on Dec 17, 2025

14 days
remaining to apply

Urban Green and Community Gardens Grant Program

The Urban Green and Community Gardens Grant Program provides funding assistance to develop or enhance urban green spaces for public enjoyment and/or environmental education. Promotion of open space in an urban...

Connecticut State

Land Use

Environmental Health Hazards

Recreation & Access

Community Engagement

Green Infrastructure

[View Details](#)

\$7M for New Long Island Sound Ecosystems Grant Program: Supports the planning/engineering/design and construction of projects focused on coastal habitat restoration and green stormwater infrastructure across Connecticut. **No Match. Due December 16, 2025.**

\$44M for CT DEEP Climate Resilience Fund: State and federal funds to support planning, project advancement, and construction to help Connecticut's communities build resilience to extreme weather. **Due January 15, 2026.**

\$750K for New York Climate Resilience Grant Program (CRGP) through The Nature Conservancy in New York: For conservation and climate adaptation projects. **Due February 13, 2026.**

\$4.2B NYS Environmental Bond Act: For climate resilience and protection of natural resources.

- **\$25M currently available for Open Space Conservation Grant Program.** No match. **Due February 18, 2026.**

Up to \$400K for Long Island Sound Stewardship Fund: To restore and protect the health and living resources of Long Island Sound. *Opening December 8, 2025 with applications due February 5, 2026. Only nonprofits are eligible to apply.*

Long Island Sound Futures Fund: For water quality improvement, habitat restoration, and resilience projects in the Long Island Sound watershed. *Typically opens in March with applications due in May.*

NYS Consolidated Funding Application: Access to multiple state funding sources through one application. Grants are available for land protection, habitat restoration, water quality improvements, community resilience, and more! *Typically opens in May with applications due in July.*

Coming Spring 2026

An opportunity to hear directly from federal, state, local funding programs and speak with program officers about your project ideas and applications!





LONG ISLAND SOUND
PARTNERSHIP

Questions?



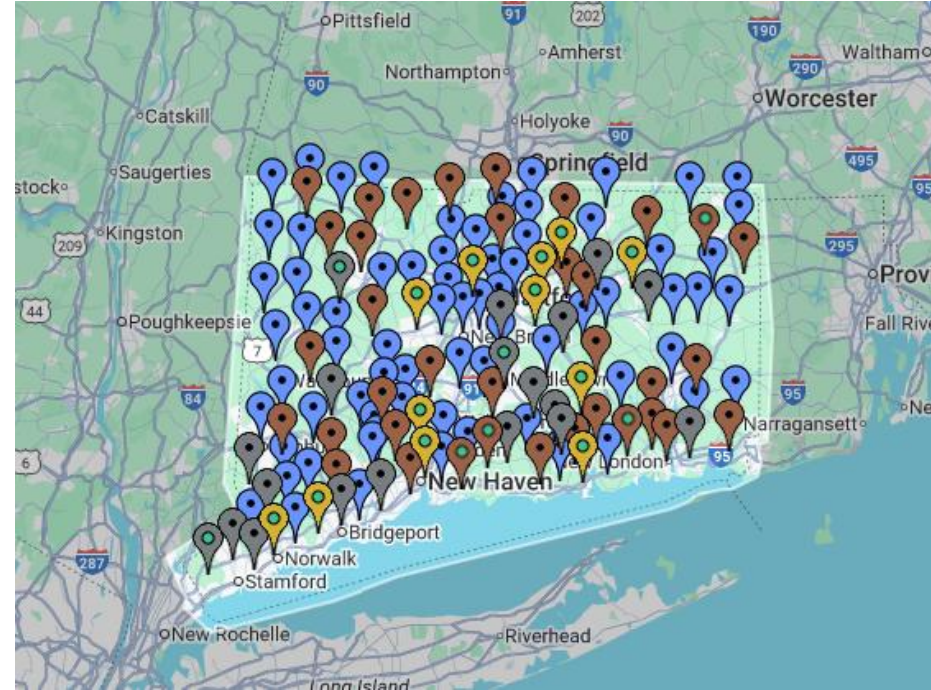
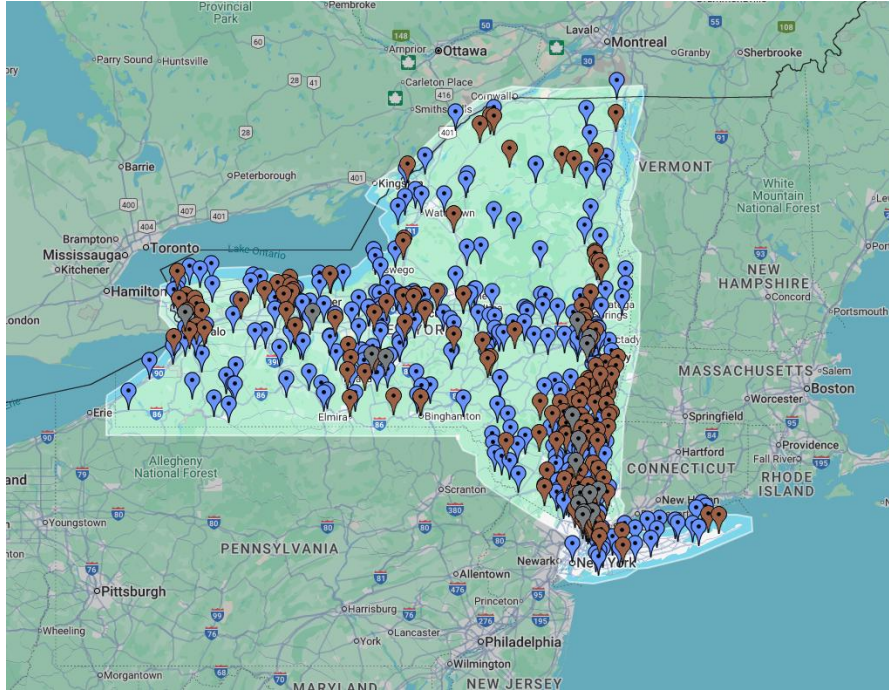
Credit: Sarah Schaefer-
Brown

Guidance through State Climate Certification Programs



Credit: Sarah Schaefer-
Brown

NYS Climate Smart Communities (CSC) Sustainable CT



Thank you to our guest speakers

NY Session



Sofie diTommaso

NYS CSC Coordinator (Mid-Hudson)
Resilience and Adaptation Coordinator
Hudson Valley Regional Council



Mary Lambert

NYS CSC (Mid-Hudson)
Climate Action Planning Manager
Hudson Valley Regional Council



Sarah Oral

NYS CSC (Downstate)
Senior Associate/Project
Manager, IMEG



Jess Kuonen

Hudson Estuary Specialist, NY Sea
Grant

CT Session



Kate Richard

Sustainable CT Program Director
for Sustainability Best Practices



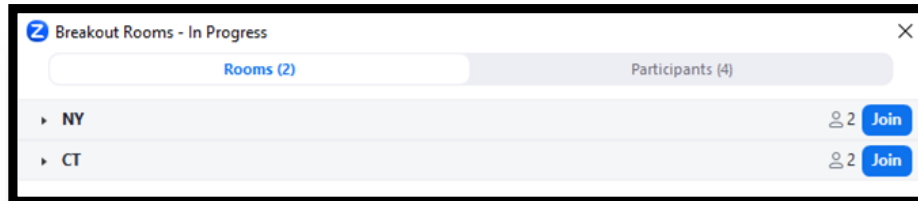
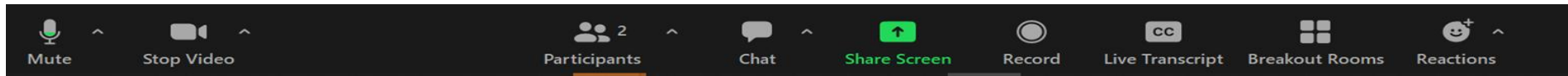
Sarah Schechter

SRC EP for Eastern Connecticut

Look for the breakout rooms button on your Zoom toolbar

- It may be under “More”

Select which room you'd like to join from the pop-up box and click 'Join'



If you are having problems joining a breakout room—put in the chat what room (NY or CT) you would like to go to & please be patient as you are sent there.



LONG ISLAND SOUND
PARTNERSHIP

New York Session



Credit: Sarah Schaefer-Brown

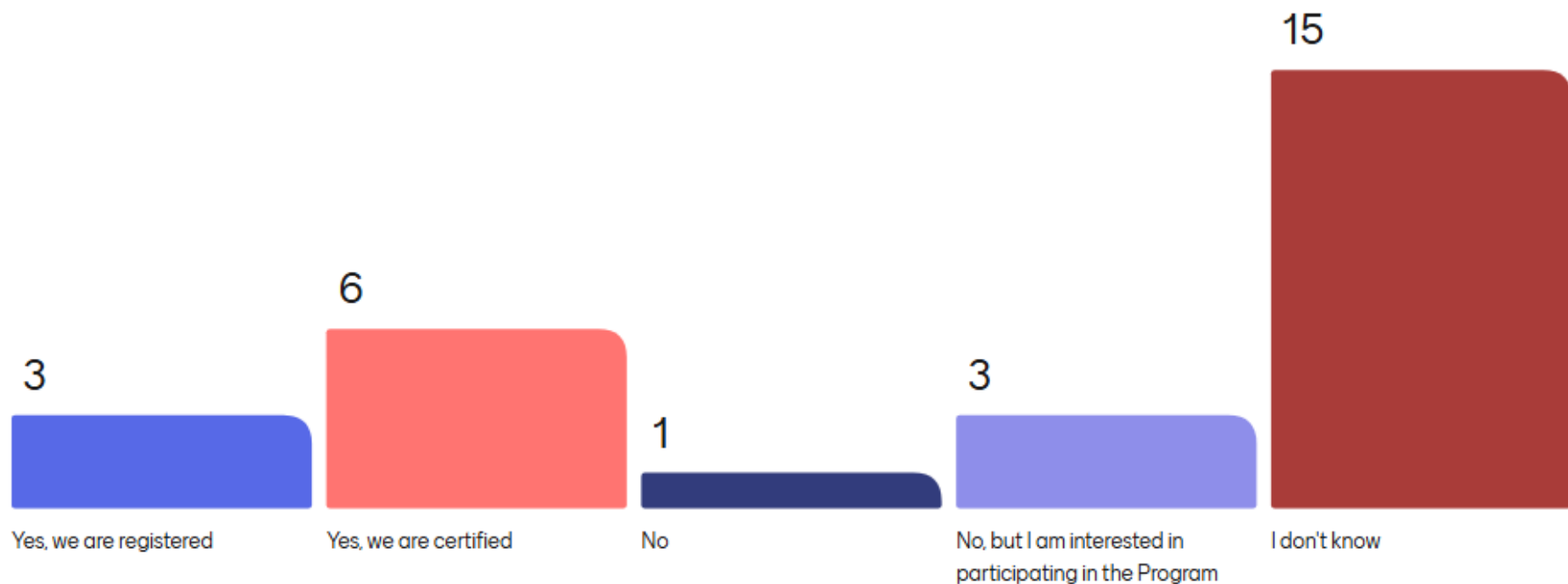


LONG ISLAND SOUND
PARTNERSHIP

Is your municipality
participating in NYS
Climate Smart
Communities?



Is your municipality participating in NYS Climate Smart Communities?



Climate Smart Communities Program: Resilience Overview



Hudson Valley Regional Council



Department of
Environmental
Conservation



Climate Smart
Communities

Climate Smart Communities (CSC)

State Support for Local Climate Action

- Provide assistance and clear pathways for local government leaders to:
 - Reduce greenhouse gas pollution
 - Build resiliency in the face of climate change

Sponsored by seven state agencies working to support municipalities to act in the fight against climate change.



Hudson Valley Regional Council



Department of
Environmental
Conservation



Climate Smart
Communities

CSC & Climate Resilience

CSC Pledge Element

7:

Enhance Community
Resilience to Climate
Change



Hudson Valley Regional Council



Department of
Environmental
Conservation



Climate Smart
Communities

CSC & Climate Resilience

CSC Pledge Element

7:

Enhance Community
Resilience to Climate
Change

21 Actions



Hudson Valley Regional Council



Department of
Environmental
Conservation



Climate Smart
Communities

CSC & Climate Resilience

CSC Pledge Element

7:

Enhance Community
Resilience to Climate
Change

21 Actions

PE7: Climate Vulnerability
Assessment



Hudson Valley Regional Council



Department of
Environmental
Conservation



Climate Smart
Communities

CSC & Climate Resilience

CSC Pledge Element

7:

Enhance Community
Resilience to Climate
Change

21 Actions

PE7: Climate Vulnerability
Assessment

PE7: Evaluate Policies for Climate
Resilience



Hudson Valley Regional Council



Department of
Environmental
Conservation



Climate Smart
Communities

CSC & Climate Resilience

**CSC Pledge Element
7:**
Enhance Community
Resilience to Climate
Change

21 Actions

PE7: Climate Vulnerability
Assessment

PE7: Evaluate Policies for Climate
Resilience

PE7: Climate Adaptation Plans



Hudson Valley Regional Council



Department of
Environmental
Conservation



Climate Smart
Communities

CSC & Climate Resilience

**CSC Pledge Element
7:**
Enhance Community
Resilience to Climate
Change

21 Actions

PE7: Climate Vulnerability
Assessment

PE7: Evaluate Policies for Climate
Resilience

PE7: Climate Adaptation Plans

**Climate Change Adaptation
& Resilience Plan (CCARP)**

NY State Template

- Plan outline, guidance, resources, and recommended steps



Hudson Valley Regional Council



Department of
Environmental
Conservation

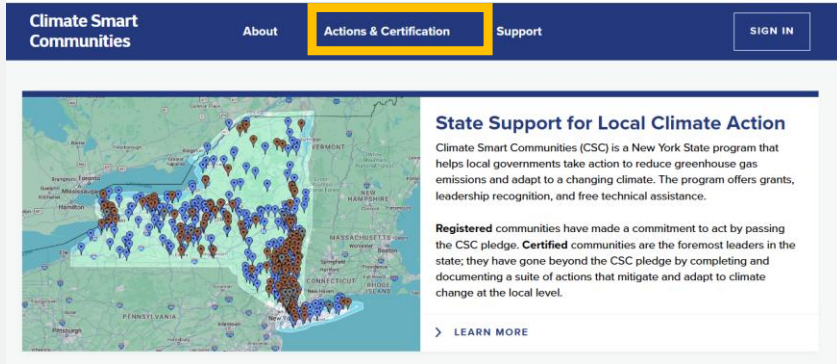


Climate Smart
Communities

How to Explore More CSC Actions

Step 1: Visit <https://climatesmart.ny.gov/>

Step 2: Review Actions & Certifications



Climate Smart Communities

About Actions & Certification Support

SIGN IN

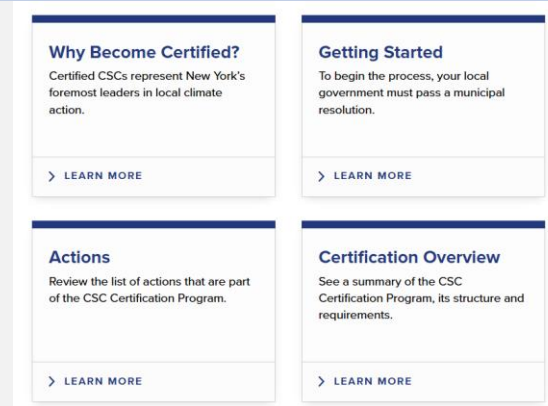
State Support for Local Climate Action

Climate Smart Communities (CSC) is a New York State program that helps local governments take action to reduce greenhouse gas emissions and adapt to a changing climate. The program offers grants, leadership recognition, and free technical assistance.

Registered communities have made a commitment to act by passing the CSC pledge. **Certified** communities are the foremost leaders in the state; they have gone beyond the CSC pledge by completing and documenting a suite of actions that mitigate and adapt to climate change at the local level.

> LEARN MORE

Step 3: Review Resources



Why Become Certified?

Certified CSCs represent New York's foremost leaders in local climate action.

> LEARN MORE

Getting Started

To begin the process, your local government must pass a municipal resolution.

> LEARN MORE

Actions

Review the list of actions that are part of the CSC Certification Program.

> LEARN MORE

Certification Overview

See a summary of the CSC Certification Program, its structure and requirements.

> LEARN MORE

Step 4: Explore Actions

For more tips on navigating the CSC Portal, check out HVRC's video series:
<https://hudsonvalleyregionalcouncil.org/cec-institute/#csc-tutorial-vids>



Hudson Valley Regional Council



Department of
Environmental
Conservation

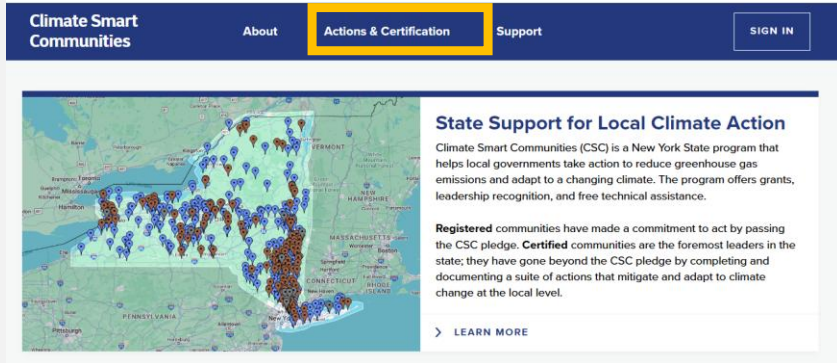


Climate Smart
Communities

How to Explore More CSC Actions

Step 1: Visit <https://climatesmart.ny.gov/>

Step 2: Review Actions & Certifications



Climate Smart Communities

About Actions & Certification Support

SIGN IN

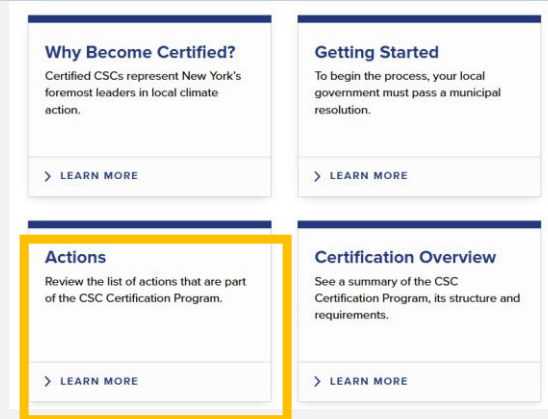
State Support for Local Climate Action

Climate Smart Communities (CSC) is a New York State program that helps local governments take action to reduce greenhouse gas emissions and adapt to a changing climate. The program offers grants, leadership recognition, and free technical assistance.

Registered communities have made a commitment to act by passing the CSC pledge. **Certified** communities are the foremost leaders in the state; they have gone beyond the CSC pledge by completing and documenting a suite of actions that mitigate and adapt to climate change at the local level.

> LEARN MORE

Step 3: Review Resources



Why Become Certified?

Certified CSCs represent New York's foremost leaders in local climate action.

> LEARN MORE

Getting Started

To begin the process, your local government must pass a municipal resolution.

> LEARN MORE

Actions

Review the list of actions that are part of the CSC Certification Program.

> LEARN MORE

Certification Overview

See a summary of the CSC Certification Program, its structure and requirements.

> LEARN MORE

Step 4: Explore Actions

For more tips on navigating the CSC Portal, check out HVRC's video series:
<https://hudsonvalleyregionalcouncil.org/cec-institute/#csc-tutorial-vids>



Hudson Valley Regional Council



Department of
Environmental
Conservation



Climate Smart
Communities

CSC Crosswalk Tool



NY Sea Grant Tool

Purpose: Identify potential synergies between CSC Actions and other NY State programs, focused on water

- Hazard Mitigation Plan
- Community Rating System
- Coastal Erosion Hazard Area Communities
- Drinking Water Source Protection Program
- Local Waterfront Revitalization Program
- Municipal Separate Stormwater Sewer System



Hudson Valley Regional Council



Department of
Environmental
Conservation



Climate Smart
Communities

CSC Crosswalk Tool

Climate Smart Communities *Crosswalk* Local Hazard Mitigation Plan (HMP)



Climate Smart
Communities

Local HMP Program Components

#	CSC Pledge Element	CSC Certification Action	Public Involvement	Risk Assessment	Mitigation Strategy	Additional HMP Requirements	# of Relevant CSC Actions per Pledge Element
7	Enhance community resilience to climate change	<i>Climate Vulnerability Assessment</i>	✓	✓			8
		<i>Evaluate Policies for Climate Resilience</i>			✓	✓	
		<i>Climate Adaptation Plan</i>	✓		✓	✓	
		<i>Climate-resilient Hazard Mitigation Plan</i>	✓	✓	✓	✓	
		<i>Heat Emergency Plan</i>	✓		✓		
		<i>Watershed-based Flood Mitigation Plan</i>	✓	✓	✓		
		<i>Green Infrastructure</i>			✓	✓	
		<i>Culverts & Dams</i>		✓			

(CSC Crosswalk: Local Hazard Mitigation Plan p. 3)



Hudson Valley Regional Council



Department of
Environmental
Conservation



Climate Smart
Communities

CSC in the mid-Hudson Region



Hudson Valley Regional Council



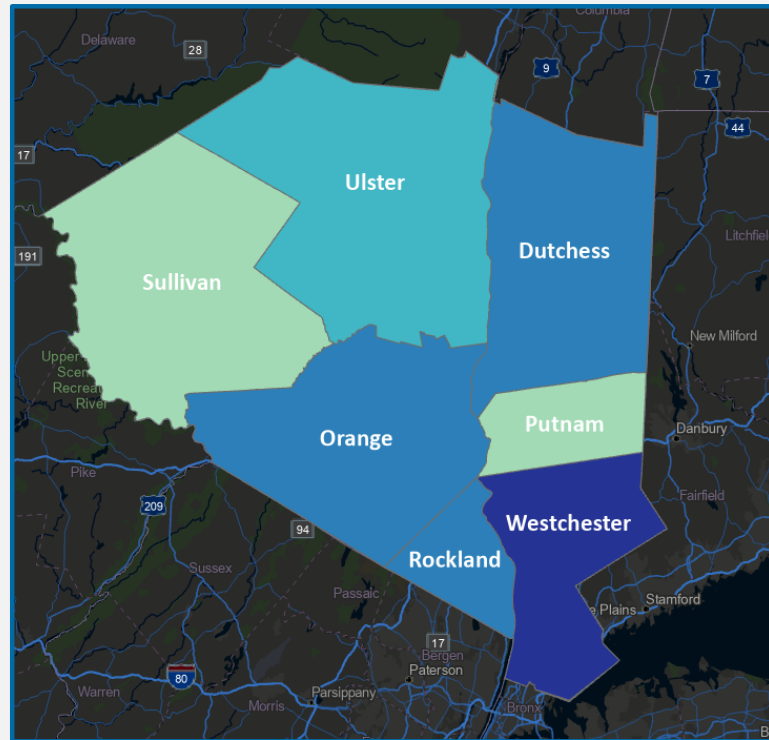
Department of
Environmental
Conservation



Climate Smart
Communities

HVRC Regional Initiatives

- US DOC Economic Development Administration
- US EPA CPRG Landfill Biofilter Project
- US EPA Rural, Small, Tribal Wastewater Program
- US NBRC & NYS DOS (to Sullivan County Local Governments only through HVRC's designation as a Local Development District)
- NYS DEC 604(b) Water Quality Planning Program
- NYSERDA Clean Energy Communities Program
- NYS Climate Smart Communities Program
- HVRC Climate Action Planning Institute & CAPI-Adapt
- Regional Platforms
 - Materials Management Working Group
 - Mid-Hudson Regional Sustainability Coalition



HVRC CSC Technical Assistance

Registration/Restart Support

- Presentation to CAC/CSC Task Forces/Municipal Boards
- CSC Action Checklist Spreadsheet

Certification Support

- One-off Questions about Actions or Process
- Final CSC Certification Application Review



Hudson Valley Regional Council



Department of
Environmental
Conservation



Climate Smart
Communities

Further HVRC CSC Technical Assistance

HVRC

Produce Climate Vulnerability
Assessments & Adaptation Plans
for 2 Counties

Resources & technical assistance
for municipalities & counties
working on all CSC Actions,
including PE 7



Hudson Valley Regional Council



Department of
Environmental
Conservation



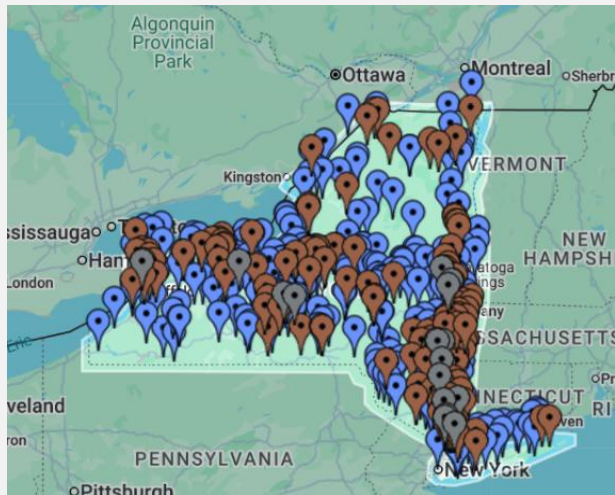
Climate Smart
Communities

CSC Participation in Mid-Hudson Region

Registered Communities: 61

Bronze Certified Communities: 59 communities

Silver Certified Communities: 14



	Registered	Bronze	Silver
Dutchess	9	14	3
Putnam	2	4	
Orange	15	4	
Rockland	8	4	1
Sullivan	7	3	
Ulster	5	11	2
Westchester	15	19	8



Hudson Valley Regional Council



Department of
Environmental
Conservation



Climate Smart
Communities

HVRC Support for CSC/CEC



Mary Lambert, Climate Action Planning Manager

CSC technical assistance & Landfill Biofilters project



Liz Sun, CEC & CSC Coordinator

CEC & CSC technical assistance to communities in the mid-Hudson



Sofie diTommaso, Resilience & Adaptation Coordinator

CSC technical assistance for PE7: Enhance Community Resilience to Climate Change actions



Eleanor Peck, Deputy Executive Director & CEC & CSC Coordinator

CEC & CSC technical assistance to communities in the mid-Hudson



Hudson Valley Regional Council

CSC in the Long Island Region

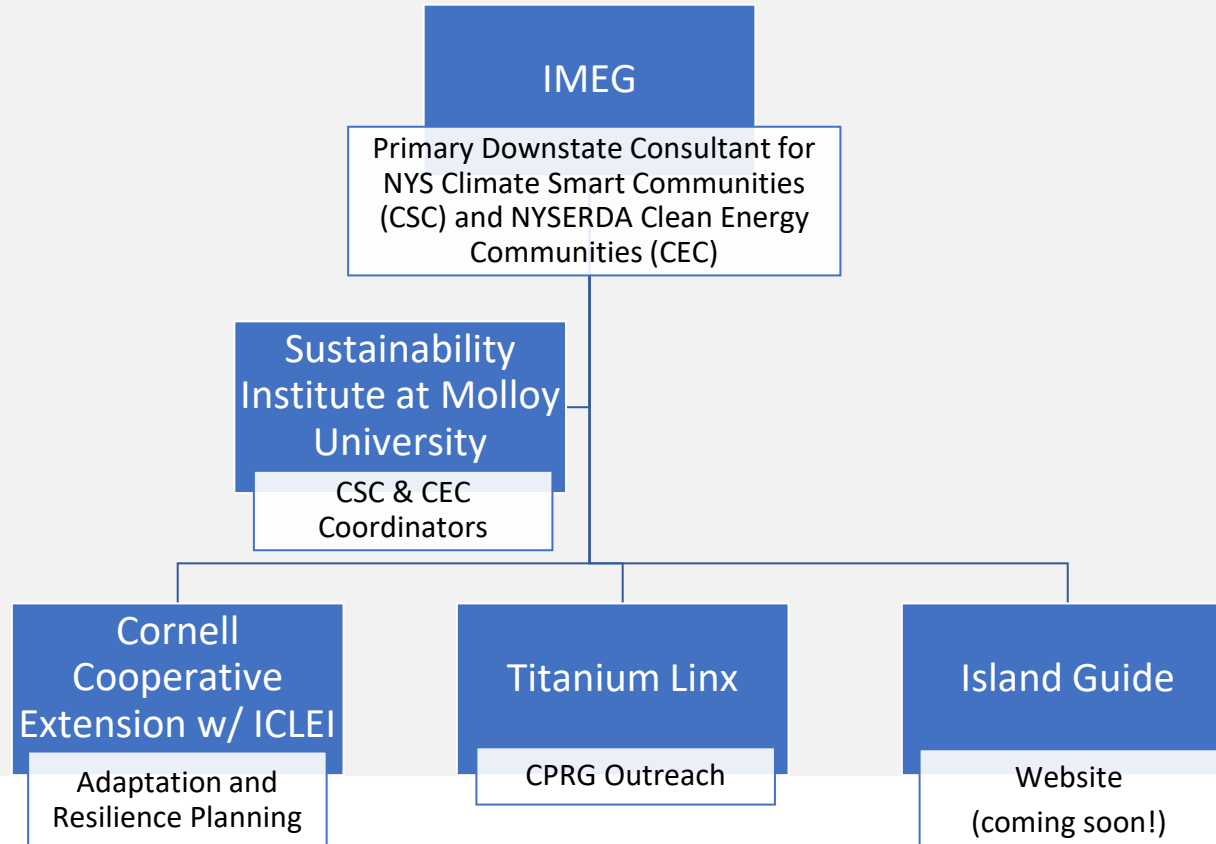


Department of
Environmental
Conservation



Climate Smart
Communities

Downstate Team



Downstate CSC Technical Assistance

Registration/Restart Support

- Presentation to CAC/CSC Task Forces/Municipal Boards
- CSC Action Checklist Spreadsheet

Certification Support

- One-off Questions about Actions or Process
- Final CSC Certification Application Review



Department of
Environmental
Conservation



Climate Smart
Communities

Further Downstate CSC Technical Assistance

Downstate Team

Produce Climate Vulnerability Assessments & Adaptation Plans for 6 Communities

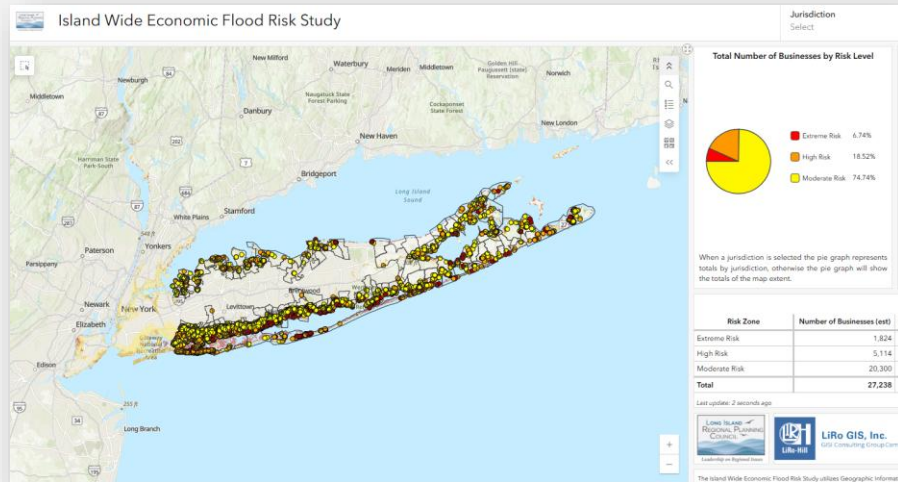
Resources & technical assistance for municipalities & counties working on all CSC Actions, including PE 7



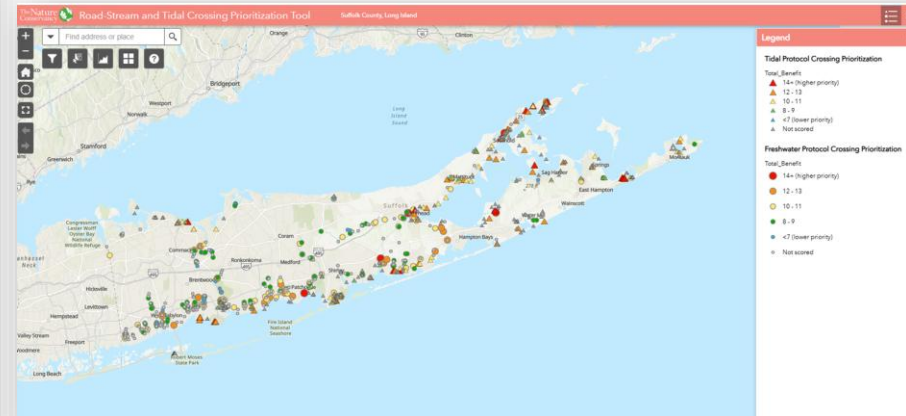
Cohort Model led by Cornell Cooperative Extension and ICLEI (2 Cohorts)

Additional Long Island Resources

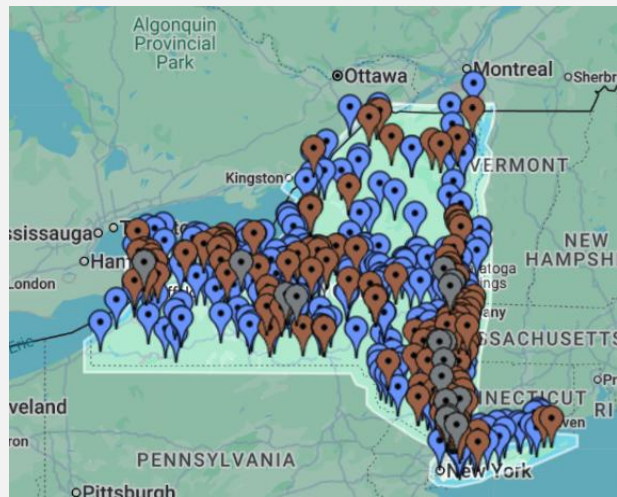
Long Island Economic Flood Risk Study (LIRPC)



Long Island Road-Stream and Tidal Crossing Prioritization Tool (Nature Conservancy, Suffolk County)



CSC Participation in Long Island Region



Registered Communities: 33 + NYC

Bronze Certified Communities: 6

- 2 Lapsed Bronze communities will be submitting for recertification in January

Silver Certified Communities: 0

- NYC set to submit for Silver certification in January

	Registered	Bronze	Silver
Nassau	13	2 (2 Former)	0
Suffolk	20	4 (1 Former)	0 (1 Former)

Downstate Support for CSC/CEC



Sarah Oral, CSC & CEC Director
and Coordinator for Downstate

CSC & CEC technical assistance to
communities on Long Island



David Tepper, CSC & CEC
Coordinator

CSC & CEC technical assistance to
communities on Long Island



Andrew Manitt, CSC & CEC
Coordinator

CSC & CEC technical assistance to
communities on Long Island

Hastings-on-Hudson: A Case Study



Credit: Jeanne Newman

- **Population:** 8,590
- **Area:** ~3 sq miles
- **Location:** Westchester County, along Hudson River
- **Registered CSC:** 2010
- **Current CSC Certification:** Silver, 558 pts



Hudson Valley Regional Council



 | Published 2021



Hastings-on-Hudson: CSC PE 7 Actions

- 2020 |**
 - **Evaluate Policies: Climate Smart Resiliency Planning exercise***
 - **Climate Vision Statement**
 - **Climate Vulnerability Assessment***
 - Heat Emergency Plan* and Shade Structures Policy
- 2021 |**
 - Hazard Mitigation Plan (HMP) w/Westchester County
- 2022 |**
 - Right-sized culverts, riparian assessment
- 2023 |**
 - Revamped Green Building Code, green roof construction
 - Village Wide Flood Study, follow-up Feasibility Study
- 2024 |**
 - \$2.5m NYS EFC Grant for Detention Pond Project



Hastings-on-Hudson: Flood Study



- **Phase 1:** compile available information to ID drainage infrastructure and hydrology, and prepare long term plan to alleviate flooding
- **Phase 2:** Fieldwork
- **Phase 3:** Detailed analysis
- **Phase 4:** Final design and construction

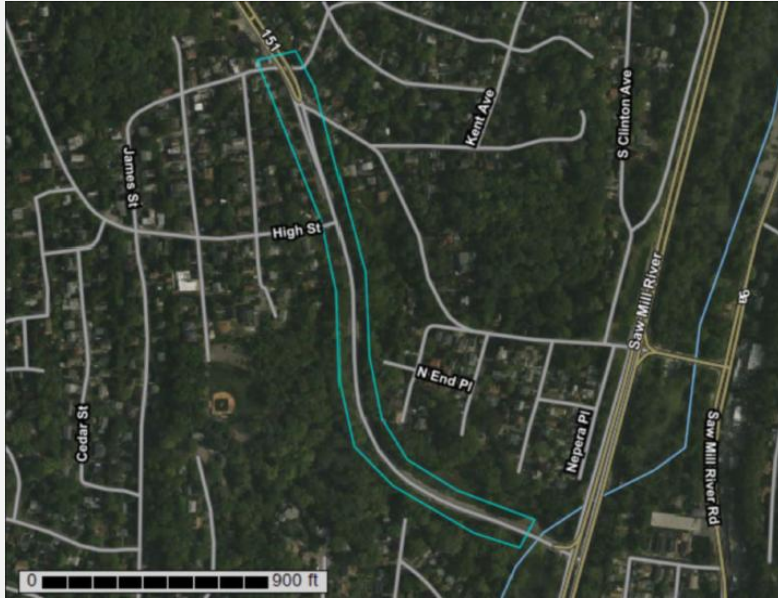
Credit: Tim Lamorte, Rivertowns Enterprise



Hudson Valley Regional Council



Hastings-on-Hudson: Feasibility Study



Credit: James Hahn Engineering

Proposed project: Possible detention Pond on an extended shallow wetland.

Location: Farragut Parkway adjacent to the Boutilliers Brook.

Studied: Soil survey, water quality, bedrock depth, 100-year flood plain, adjacent property development.

Study findings: high feasibility at project cost of \$2-2.5 million.



Hudson Valley Regional Council



Hastings-on-Hudson: Green Infrastructure



Credit: Thomas McCue

- **Grant Award:** \$2.5 m
- **Funding Source:** NYS EFC
- **Project Description:** Creation of Detention Pond in Village-owned open space
- **Project Benefits:** Store runoff, settle pollutants, reduce downstream peak flows, and increase beautification.



Hudson Valley Regional Council



Contact HVRC / IMEG

[Hudson Valley
Regional Council](#)

105 Ann Street, Ste2
Newburgh, NY 12550
845-564-4075

[IMEG](#)

177 Crossways Park Dr.
Woodbury, NY 11797
516-224-5237

Sofie diTommaso

Resilience & Adaptation Coordinator, HVRC
sditommaso@hudsonvalleyrc.org

Mary Lambert

Climate Action Planning Manager, HVRC
mlambert@hudsonvalleyrc.org

Sarah Oral

Senior Associate, IMEG
sarah.i.oral@imegcorp.com



Hudson Valley Regional Council



Questions?



Credit: Sara Powell

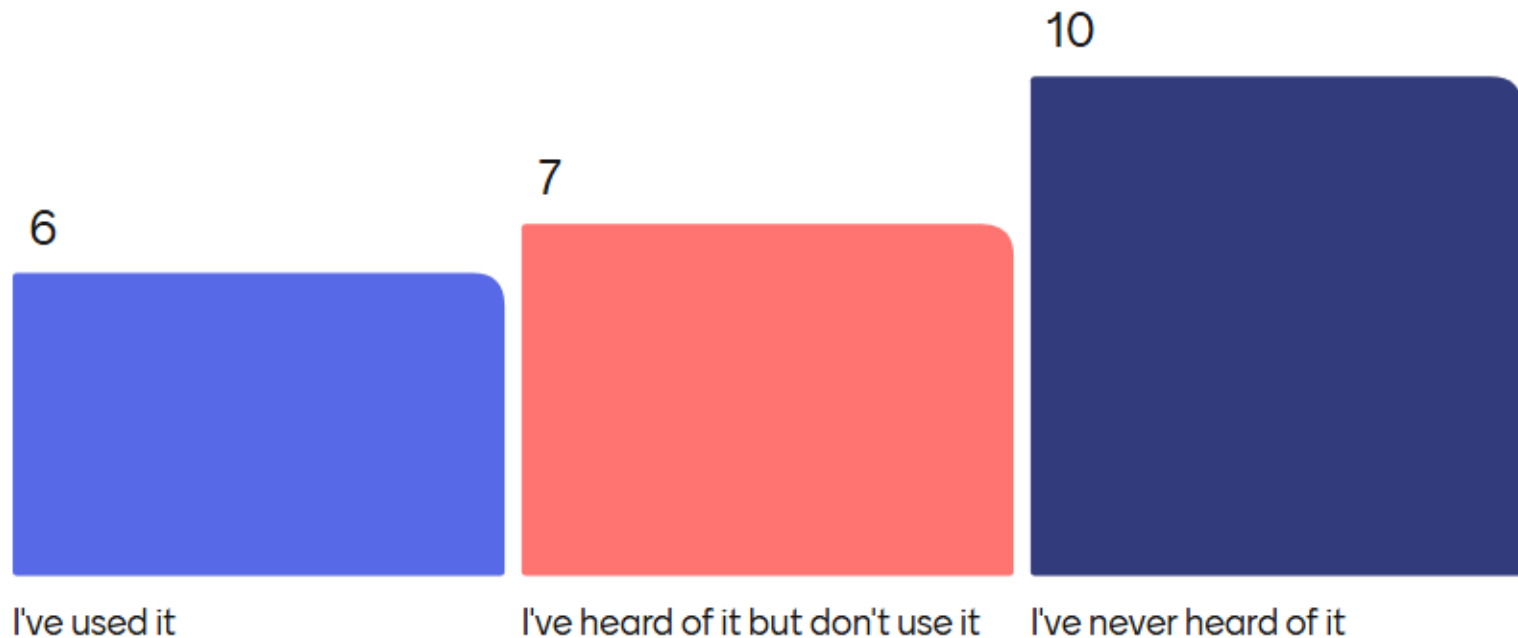


LONG ISLAND SOUND
PARTNERSHIP

What is your current
knowledge/experience
with MyCoast NY?



What is your current knowledge/experience with MyCoast NY?





A Free Tool for Documenting Storm Events and Engaging Residents

Jessica Kuonen, NYSG
SRC Annual Workshop
December 4, 2025





www.mycoast.org/ny

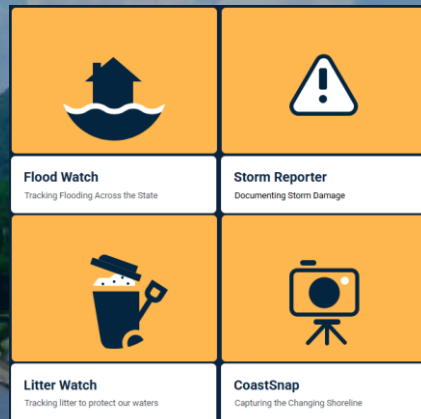
MyCoast:

New York

Help document New York's changing water levels and weather impacts

The MyCoast New York portal is used to collect and analyze photos of changing water levels, shorelines, and hazardous weather impacts across New York's varied coasts and water bodies. Photos are linked to real-time environmental conditions to create reports that help stakeholders like government agencies, business owners, and residents understand our changing environment and make informed decisions.

***In NY, MyCoast can be used inland and statewide.
Not just for the coast!***



Why document storms and floods?

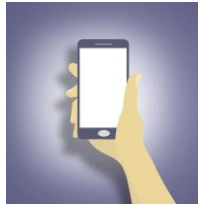
- Flood risk is increasing
 - Photos complement existing datasets & help validate models
 - Captures impacts and places that flood repeatedly
 - Raise public awareness
 - Engages and empowers communities
-
- “A picture is worth 1,000 words”



Tully, NY – 8/18/2021

How it works

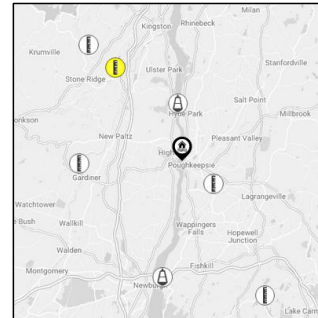
Submit a photo ☐ creates a “report” ☐
automatically places photo on a map and links it
with nearby environmental conditions based on
date, time, and location of photo.



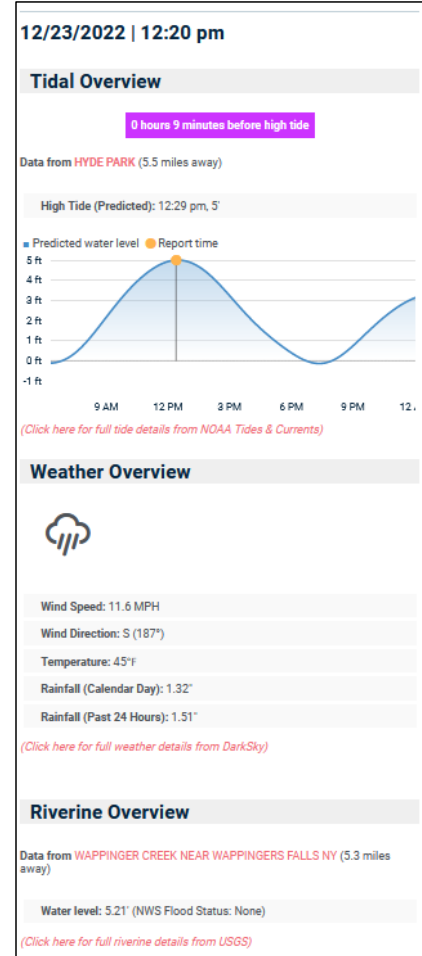
Community
member as
registered user



Photo



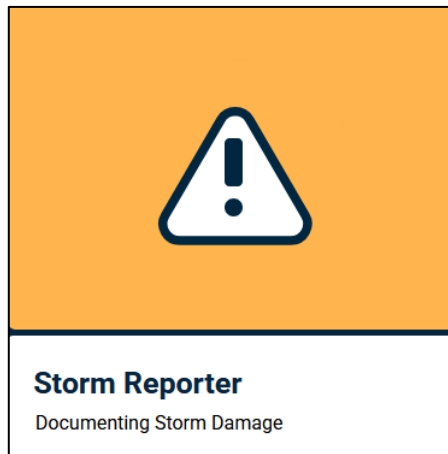
Data



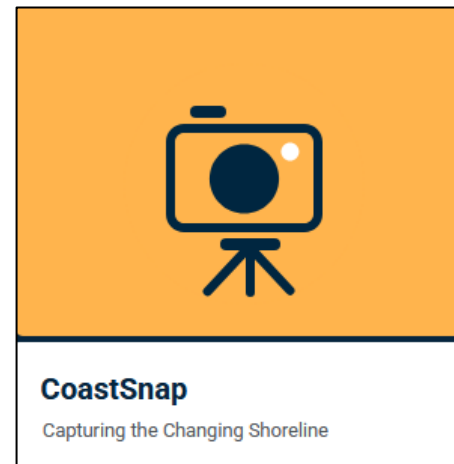
Report types



Flooding: water
on land that's
normally dry



Damage from
wind, water, ice,
snow, fire



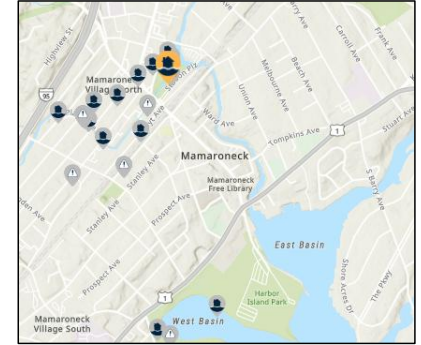
Phone cradles
at 9 locations
across NYS

Flood Watch Report: Heavy Rain

Mamaroneck, NY
9/29/2023 12:20 pm



Credit: Tadej Znidarcic
<https://mycoast.org/reports/162341>



Weather Overview



Wind Speed: 13.6 MPH

Wind Direction: NE (41°)

Temperature: 61°F

Rainfall (Calendar Day): 0.2"

Rainfall (Past 24 Hours): 3.6"

[\(Click here for full weather details\)](#)

Tidal Overview

0 hours 39 minutes after high tide

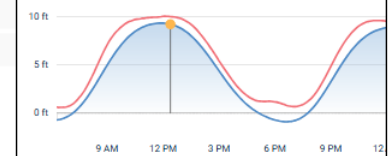
Data from KINGS POINT (10.4 miles away)

Water Level (at time of report): 12:20 pm, 10'

High Tide (Predicted): 11:54 am, 9.3'

High Tide (Observed): 12:18 pm, 10'

■ Observed ■ Predicted water level ● Report time



Riverine Overview

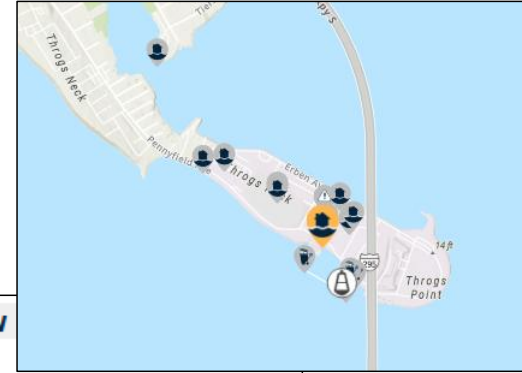
Data from BYRAM RIVER AT PEMBERWICK, CT (6.6 miles away)

Water level: 6.42' (NWS Flood Status: Not defined)

Flood Watch Report: Shallow flooding

East Bronx, NY (SUNY Maritime)

5/5/25 3:15 pm



Weather Overview



Wind Speed: 12.2 MPH

Wind Direction: NE (54°)

Temperature: 59°F

Rainfall (Calendar Day): 0.159"

Rainfall (Past 24 Hours): 0.39"

Tidal Overview

4 hours 30 minutes before high tide

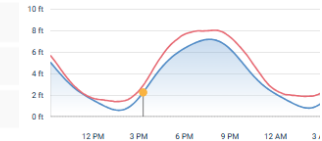
Data from KINGS POINT (1.7 miles away)

Water Level (at time of report): 3:15 pm, 2.5'

High Tide (Predicted): 7:41 pm, 7.2'

High Tide (Observed): 8:06 pm, 8'

■ Observed ■ Predicted water level ● Report time



[\(Click here for full weather details\)](#)

Flood Watch: Coastal Flooding

Nissequogue, NY
9/30/2023 12:57 pm



Credit: Bill Goodman
<https://mycoast.org/reports/128581>

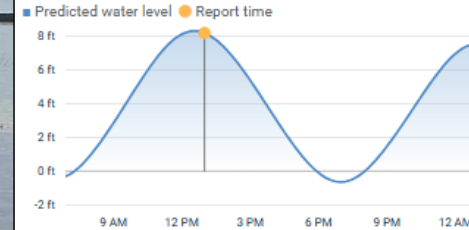


Tidal Overview

0 hours 24 minutes after high tide

Data from **PORT JEFFERSON** (5.9 miles away)

High Tide (Predicted): 12:33 pm, 8.3'



(Click here for full tide details from NOAA Tides & Currents)

Weather Overview



Wind Speed: 13.9 MPH

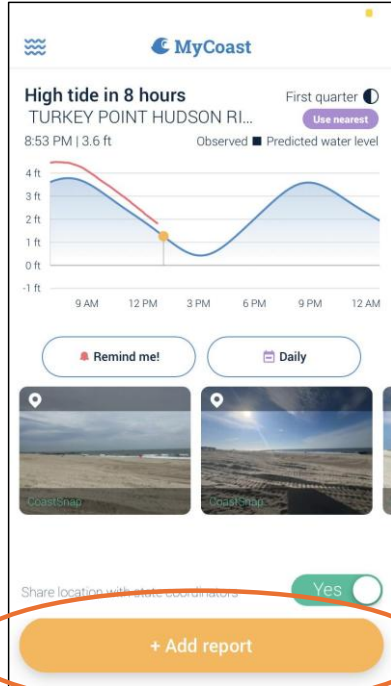
Wind Direction: NNE (30°)

Temperature: 62°F

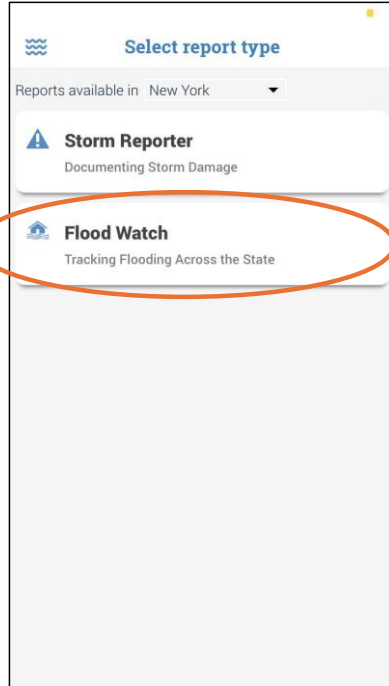
Rainfall (Calendar Day): 0.031"

Rainfall (Past 24 Hours): 1.34"

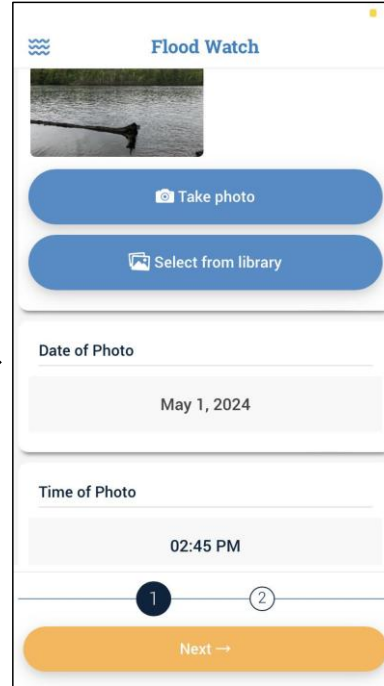
How to upload a photo in the app



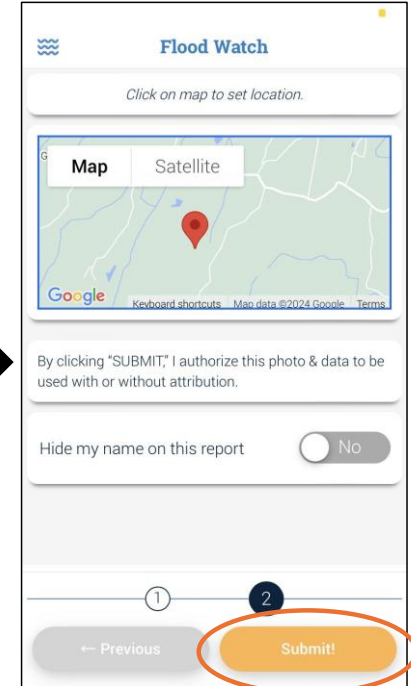
Select: + Add Report



Select: Report type



Upload/take photo, check date/time, add additional info, **Next**



Check location, **Submit!**


Search
reports on
website
(not app)


Map showing locations of reports in the East Quogue, NY area. Locations are marked with orange pins. The map includes labels for Nassau, Levittown, West, Freeport, and East Quogue. The map is powered by Esri, TomTom, Garmin, SafeGraph, FAO, MET/NASA, USGS, EPA, NPS, and USFWS.


Filter Reports

- Flood Watch, Storm Reporter *
- All Flooding Sources
- All Flooding Causes
- Estimated water depth (in)
- Suffolk County *
- All Communities *
- All Localities *
- Damage Reported?
- All Reporters
- Start date *
- End date *

Download These Reports

East Quogue, NY
Flood Watch | October 20, 2025 at 8:20 am | Kenny Williams

Internal
Public
Public & Featured
Delete

Amityville, NY (Intersection of Ocean Ave., Richmond Avenue and Unguarded Pl. Amityville)
Flood Watch | October 14, 2025 at 4:37 pm | David Thomas

Internal
Public
Public & Featured
Delete

Amityville, NY (Corner of shore Road and Swartwout Place Amityville)
Flood Watch | October 14, 2025 at 4:28 pm | David Thomas

Internal
Public
Public & Featured
Delete

"Flooding on Dune Rd. from Shinnecock Inlet to Westhampton area."

"High tide. National weather service predicted major flooding only reached moderate flooding. Depth of water at intersection approximately 10 inches. Depth of water at the dead end was 20 inches."

Resources on website

- Flyer
- Factsheets
- Newsletters
- Recordings

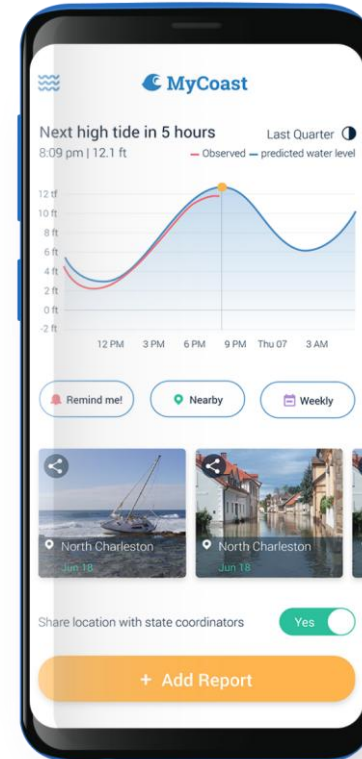
The screenshot displays the MyCoast New York website with a navigation bar at the top containing links for NY MyCoast, Flood Watch, Storm Reporter, CoastSnap, and Search Reports. The main heading is "MyCoast New York Resources". Below this, there are several resource cards:

- MyCoast New York VOLUNTEERS NEEDED!**: A flyer encouraging volunteers to help document local flooding and storm impacts. It includes a QR code and a link to MyCoast.org/ny.
- MyCoast New York Fact sheet**: A document titled "Documenting Local Flooding and Storm Impacts Through Community Science". It explains how volunteers can help document flooding and storm impacts across New York State.
- MyCoast New York July 2023 Newsletter**: A newsletter titled "Flood Outlook" for July 2023. It includes information about the highest tides, the impact of climate change, and a call to action for volunteers.
- MyCoast New York July 2023 Newsletter**: A newsletter titled "Flood Outlook" for July 2023. It includes information about the highest tides, the impact of climate change, and a call to action for volunteers.

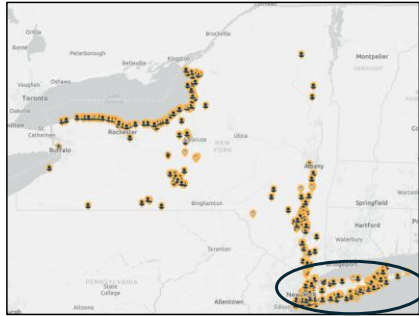
The website also features a "Flood Watch New York" section with a "VOLUNTEERS NEEDED!" banner and a "Flood Outlook" section with a "Flood Outlook" banner.

Become a MyCoast NY volunteer

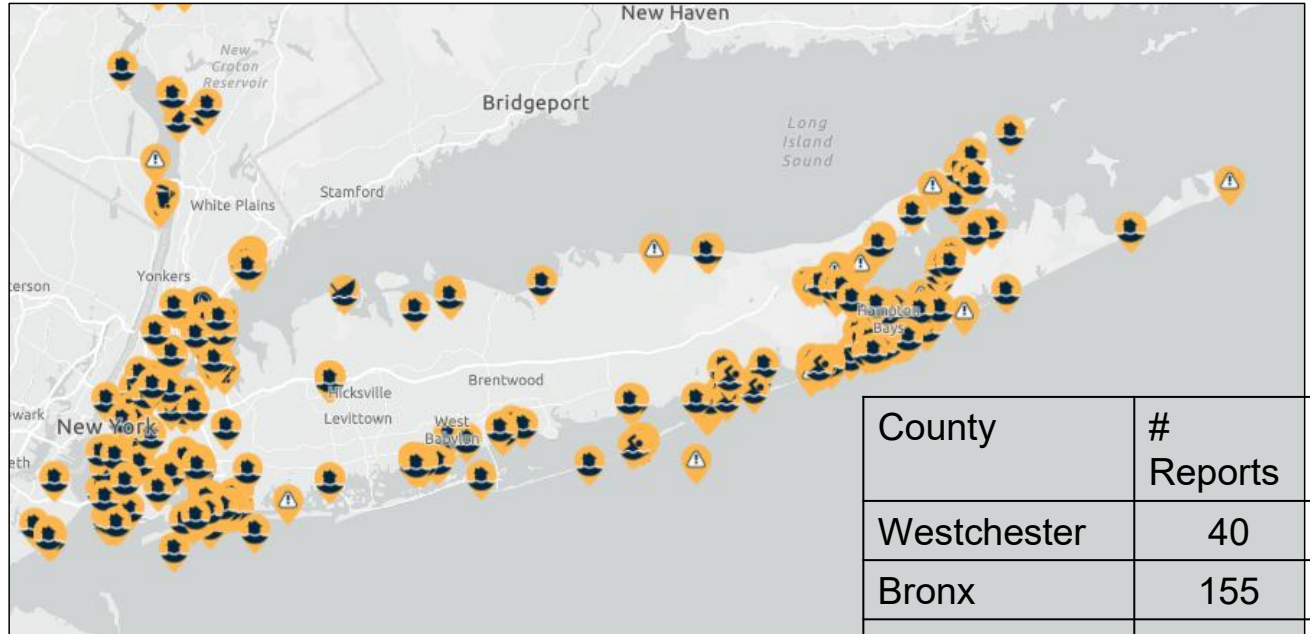
1. Download the MyCoast app or visit MyCoast.org/ny
2. Register
3. Select or snap photo
4. Submit photo report



MyCoast NY Photo Reports: Flood Watch & Storm Reporter



Statewide:
1,841 photos



County	# Reports
Westchester	40
Bronx	155
Queens	753
Nassau	20
Suffolk	224

MyCoast NY and Resilience Planning

- Understand Risk
- Engage community
- Secure funding



 **MyCoast New York**

VOLUNTEERS NEEDED!

Help document local flooding and storm impacts in New York through community science

The MyCoast New York portal is used to collect and analyze photos of flooding, changing shorelines, and hazardous weather impacts across New York's varied coasts and water bodies.

Photos are linked to real-time environmental conditions to create reports that help stakeholders like government agencies, business owners, and residents understand our changing environment and make informed decisions.

REPORT TYPES

 **FLOOD WATCH -**
Tracking flooding across the state

 **STORM REPORTER -**
Documenting storm damage

Download the **MyCoast app** or visit **MyCoast.org/ny**

 DOWNLOAD

 REGISTER

 SNAP PHOTO

 SUBMIT PHOTO

 Need more info?
Contact Jessica Korman,
jako44@cornell.edu

 Sea Grant
SUNY

 NEW YORK STATE
WATER RESOURCES
INSTITUTE

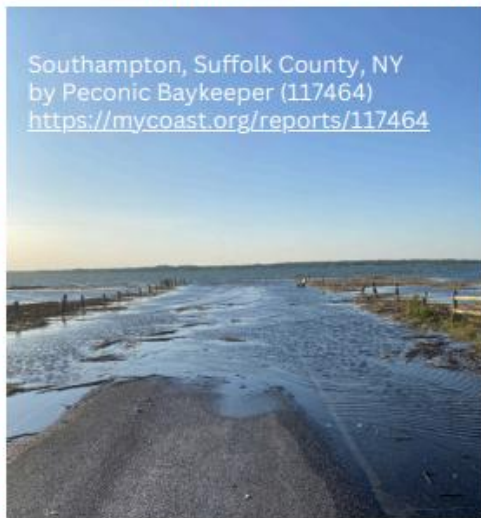
Case Study: Southampton , NY

Improved Emergency Management Operations in Southampton, NY



In the Emergency Operations Center, we are able to view pictures of conditions in the field as soon as they are submitted via MyCoast NY. These images are also shared with the National Weather Service staff, who can utilize them to verify forecasts and improve warning operations. It has enhanced our situational awareness within the town. This app also allows us to benefit from a degree of crowdsourcing to obtain flooding, coastal erosion, and storm damage information throughout the Town that informs planning and can be used in grant applications.

Ryan Murphy, Southampton Code Compliance & Emergency Management



Southampton, Suffolk County, NY
by Peconic Baykeeper (117464)
<https://mycoast.org/reports/117464>

In Southampton, MyCoast:

- Provides a centralized tool for field reporting and damage assessments, as opposed to staff's informal updates sent via text or email.
- Continuously refreshes information, enabling timely responses by emergency management personnel.
- Has filters that allow the narrowing of reports by location, from counties to hamlets.
- Operates alongside national data sources, such as information from the National Weather Service.
- Is a cost-free force multiplier, with an estimated cost savings of \$100,000** annually.

***Based on the cost of additional staff annual salary staff or developing and maintaining a similar app).*

Thank you! Questions?

Jess Kuonen

New York Sea Grant

jak546@cornell.edu



<https://mycoast.org/ny>





LONG ISLAND SOUND
PARTNERSHIP

What other resources
would help you pursue
resilience in your
community?



What other resources would help you pursue resilience in your community?

\$





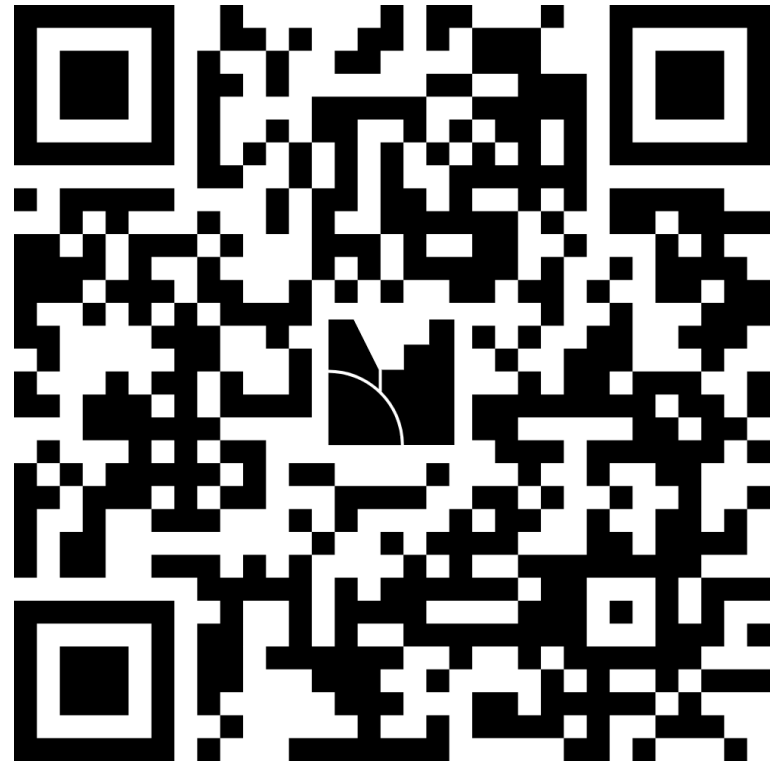
LONG ISLAND SOUND
PARTNERSHIP

Connecticut Session

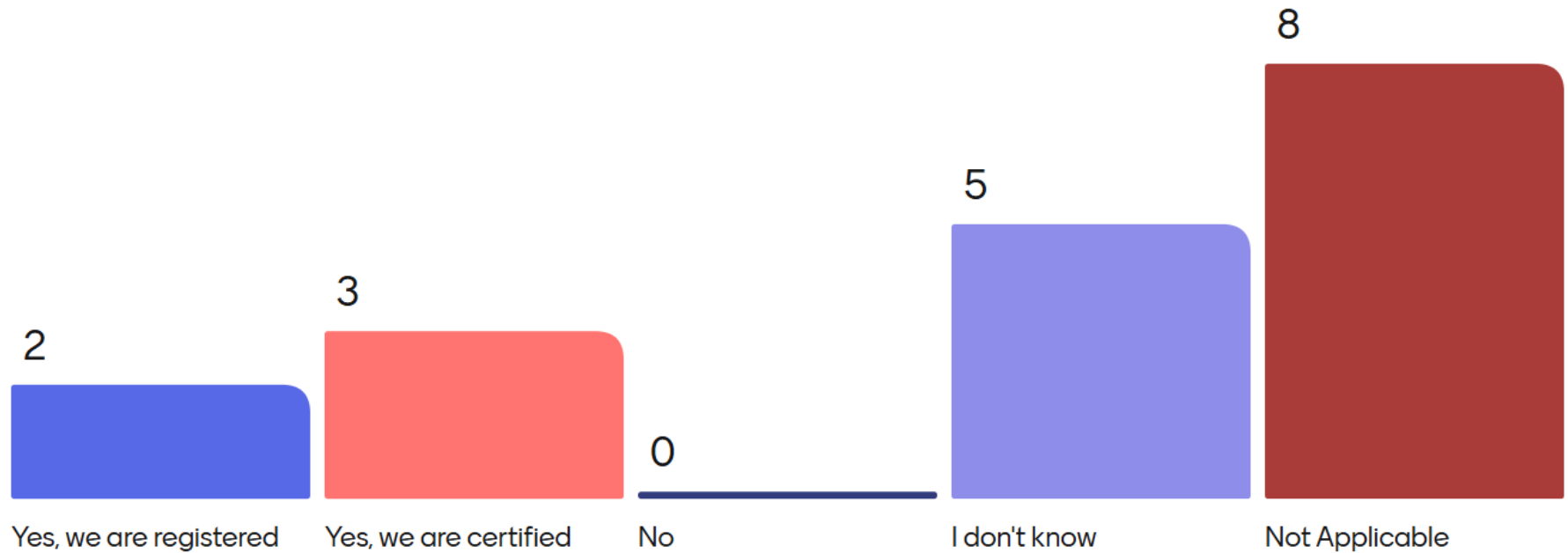


Credit: Deb Visco Abibou

Poll #1

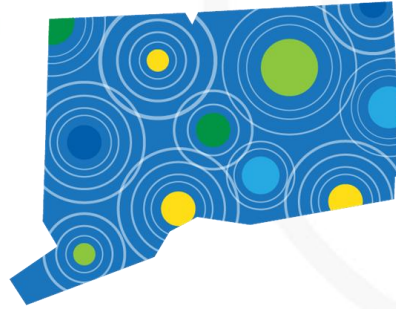


Is your municipality participatingn in Sustainable CT?



Sustainable CT

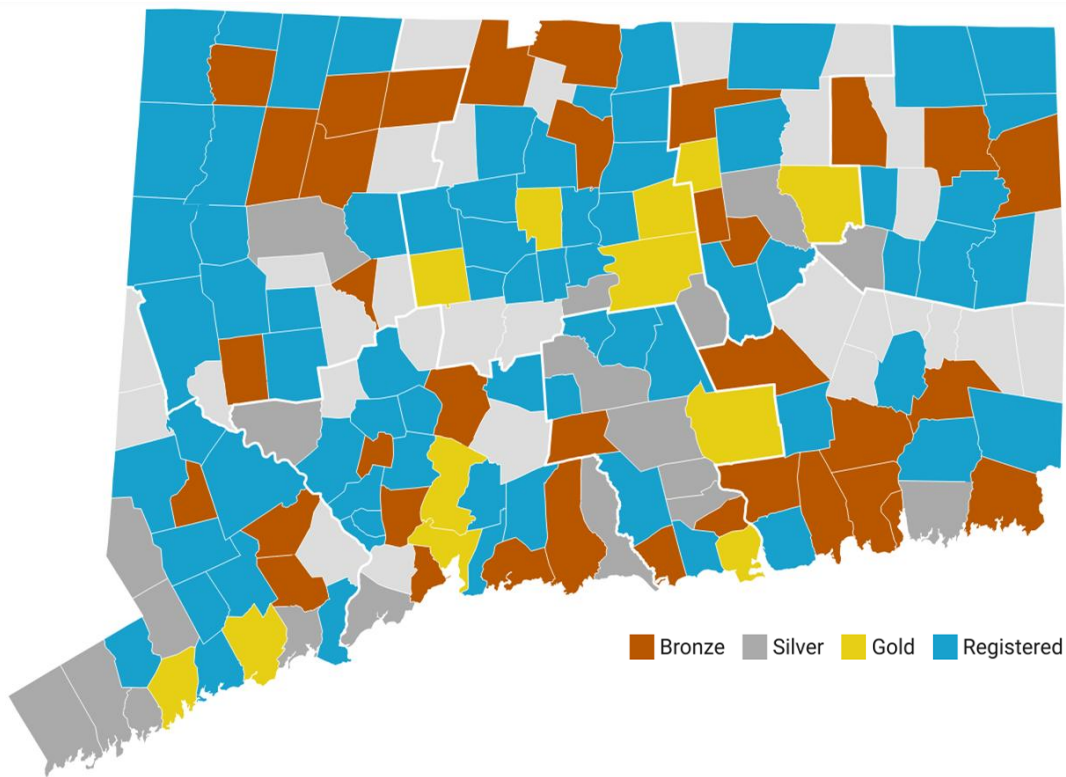
Local Actions. Statewide Impact.®



Sustainable & Resilient Communities Workshop

Sustainable CT, Climate Resilience, and Resources for Your Community

Sustainable CT: Our Vision



- Sustainable CT is a voluntary certification program to recognize thriving and resilient Connecticut municipalities.
- 139 of Connecticut's 169 municipalities are currently registered with Sustainable CT, and 67 are currently certified.

Advancing Sustainability Through...



Roadmap

- Menu of sustainability actions



Resources

- Technical assistance and funding



Certification

- Recognition and celebration of achievements

Roadmap of Voluntary Actions

1. Inclusive and **equitable community** impacts
2. Thriving **local economies**
3. Well-steward **land and natural resources**
4. Vibrant and creative **cultural ecosystems**
5. Dynamic and resilient **planning**
6. Clean and diverse **transportation** systems
7. Renewable and efficient **energy infrastructure and operations**
8. Inclusive **engagement, communication and education**
9. Strategic **materials management**
10. Optimal **health and wellness** opportunities
11. Healthy, efficient, and diverse **housing**
12. Effective, compassionate **homelessness prevention**
13. Innovative **strategies and practices**

Climate Resilience in the Action Roadmap

3.8 Implement Low Impact Development

5.4 Assess Climate Vulnerability

5.7 Plan for Long-Term Recovery

5.8 Promote Cool Roofs

5.9 Participate in the NFIP Community Rating System

10.6 Plan and Prepare for Extreme Heat

Resilience Activities Examples

- Glastonbury: Extreme heat and summer safety educational campaign
- Groton: Downtown Mystic resilience study and town-wide Community Resilience Building Workshop
- New Haven: Bioswales and green infrastructures program
 - Long Island Sound Partnership Case Study
- Old Saybrook: Amended local regulations to require two additional feet of freeboard in certain areas
- West Hartford: Provide resources and information on cool roofs on their municipal website

5.10 Plan and Implement Climate Resilience Strategies

- New action for 2026 focused on climate resilience measures
- Municipalities can earn points toward certification by:
 - Educating residents and/or local businesses on climate resilience
 - Adopting a climate resilience plan
 - Implementing resilience projects in their community
 - Adopting local ordinances and policies that support climate resilience

Support and Technical Assistance

Community Match Fund

Certification application
and other support from
Fellows

Community Resilience
Building Workshops
with The Nature
Conservancy

Letters of support for
grant applications

Connecting your
community to neighbors
or other municipalities
in Connecticut

Equity coaching

Support and Technical Assistance

Events calendar

Monthly virtual
coffee hours

External grants
portal


Email newsletter

Library of “success
stories”

No-cost assistance
partners page




Community Match Fund


- Fast, easy, and flexible
- Anyone with a good idea to improve their community
- Crowdfunding doubled by **\$1-to-\$1** matching grant from Sustainable CT
- Up to **\$6,000** from matching grant
- Coaching and support for project leaders
- More than **\$4.7 million** invested in over **380** community-led projects in **88** communities

supported by 

E.O. Smith Composting Program

Raising money to buy washable trays, cups and silverware to reduce trash and purchase equipment to sort food scraps from waste in the cafeteria.

   1




Mansfield, CT Education
Community Food & Agri


\$3,975
funded of \$3,925 goal

68
patrons

Project Closed

Success!

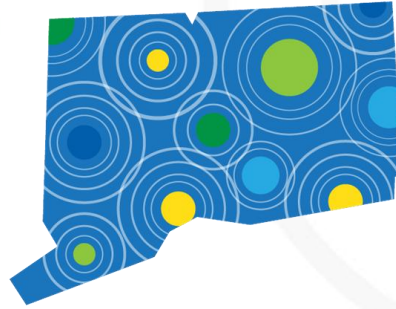
 **SUCCESS!**
This campaign reached its goal on Jul 10, 2025 1:00 PM.

 **CAMPAIGN BY:**
Louis DeLoreto

Story Updates Patrons

Sustainable CT

Local Actions. Statewide Impact.®



www.sustainablect.org

General Questions: info@sustainablect.org

Community Match Fund: funding@sustainablect.org



LONG ISLAND SOUND
PARTNERSHIP

Questions?



Credit: Deb Visco Abibou

Poll #2



What other resources can Sustainable CT offer that would help you pursue resilience in your community?



MyCoast Connecticut

A pilot project for New London, Groton, and Stonington



Sarah Schechter - SRC EP for Eastern Connecticut

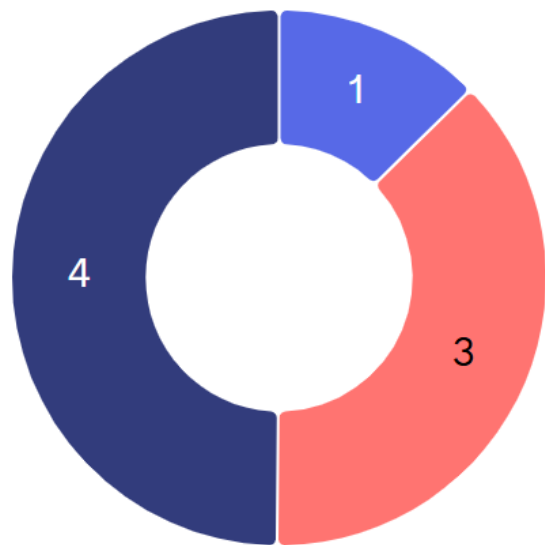


LONG ISLAND SOUND
PARTNERSHIP

Poll #3



What is your current knowledge of or experience with MyCoast CT?



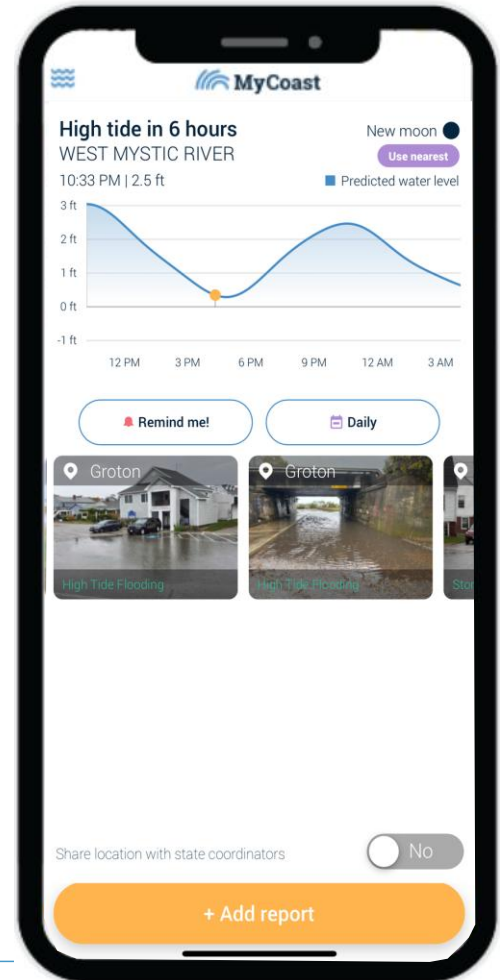
- 1 I've used it
- 3 I've heard of it, but haven't used it
- 4 I hadn't heard of it before this session

MyCoast CT



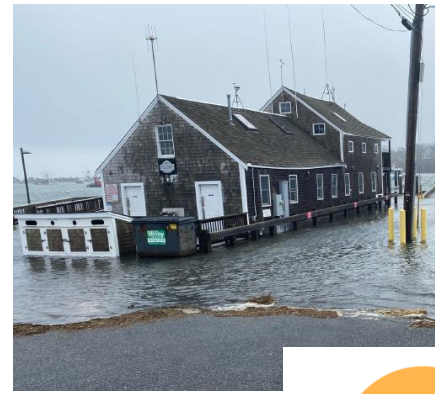
MyCoast is a free, user-friendly app for people to upload photos of **coastal flooding, storm damage, and extreme high tide events** in their community.

Download the MyCoast App, or visit <https://mycoast.org/ct> to upload photos to a public database.

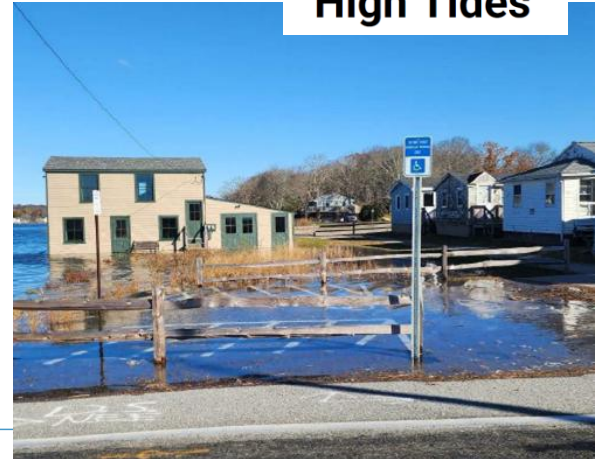


How are we using MyCoast?

- Raise public awareness of local flooding and storm preparedness.
- Identify areas repeatedly affected by flooding.
- Monitor changes in shoreline conditions over time.
- Inform state and local resilience planning and storm response strategies.



High Tides



Storm Damage





Snap. Report. Inform.



[View as Webpage](#)

Each month, certain high tides rise higher than normal, sometimes leading to flooding in low-lying coastal areas—even on clear, sunny days. These events provide a valuable opportunity to observe how water levels are changing along Connecticut's coast.

You can help us track these tides by taking and sharing photos during these events using the [MyCoast app](#).

Highest High Tides - October

Below are the dates and time windows when tides will be higher than usual.

High Tide Outlook:

- October 8 | 7:20am - 11:00am
- October 9 | 10:30am - 11:50am
- October 10 | 11:10am - 12:40pm
- October 11 | 12:00pm - 1:30pm

How to Submit a Photo

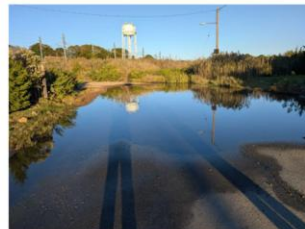
Whether it's during an extreme high tide, after a storm, or on a clear day, your observations make a difference. Please take safety precautions while taking photos.

[View as Webpage](#)

Powerful Nor'easter This Weekend

As we head into the weekend we are anticipating a nor'easter that could bring heavy rainfall, coastal flooding, strong winds, and more opportunities for MyCoast photos from Sunday into Monday. If you're in New London, Groton, Stonington, or nearby areas, your observations through the MyCoast App can help us better understand and respond to these events. Check out the safety guidance below and share what you see this weekend.

Thank you to everyone who has captured photos of flooding and high tides so far. Reports are now publicly available [here](#), and you can see some recent ones below.



Photos: Stonington (top left), Stonington (bottom left), Groton (right)

MyCoast Can Help

With the [MyCoast app](#), you can document local impacts like:

MyCoast:

New York

Help document New York's changing water levels and weather impacts

The MyCoast New York portal is used to collect and analyze photos of changing water levels, shorelines, and hazardous weather impacts across New York's varied coasts and water bodies. Photos are linked to real-time environmental conditions to create reports that help stakeholders like government agencies, business owners, and residents understand our changing environment and make informed decisions.



NEW YORK STATE
WATER RESOURCES
INSTITUTE



MyCoast: New Jersey

Help Document our Changing Coast

The MyCoast: New Jersey portal is used to collect and analyze photos of coastal events and places. Photos are linked to data about weather and tides to create reports that help stakeholders like government agencies, business owners, and residents to understand

MyCoast:

Massachusetts

A project of the Massachusetts Office of Coastal Zone Management

MyCoast: Massachusetts is a portal for the Massachusetts Office of Coastal Zone Management to collect and share photos and observations of coastal flooding, coastal storm impacts, and shoreline adaptation. MyCoast reports help increase awareness of coastal hazards and inform coastal management. Scroll down to view reports and learn how to submit your own.



Massachusetts Office of
Coastal Zone Management

MyCoast:

Rhode Island

Snap the Shore, Track the Change

MyCoast: Rhode Island is a portal to collect and analyze photos of shorelines across the Ocean State. Information collected is used to capture the impact of flood hazards today, and to illustrate possible future conditions. Photos, linked to data about weather and tides, create reports that help stakeholders like government agencies, business owners, and residents to understand shoreline change and make informed decisions.



SAVE THE BAY.
NARRAGANSETT BAY

MyCoast:

Connecticut

Join a pilot project for New London, Groton, and Stonington

MyCoast: A Pilot for Groton, New London, and Stonington invites residents to take photos of high tides, flooding, and storm damage. Submit your photos to support local planning, increase awareness, and build a stronger, more resilient shoreline for all! Help create an important record of how your community experiences coastal flooding and storm events.

For project update, please visit the [Connecticut Sea Grant MyCoast Homepage](#).

STREET FLOODED

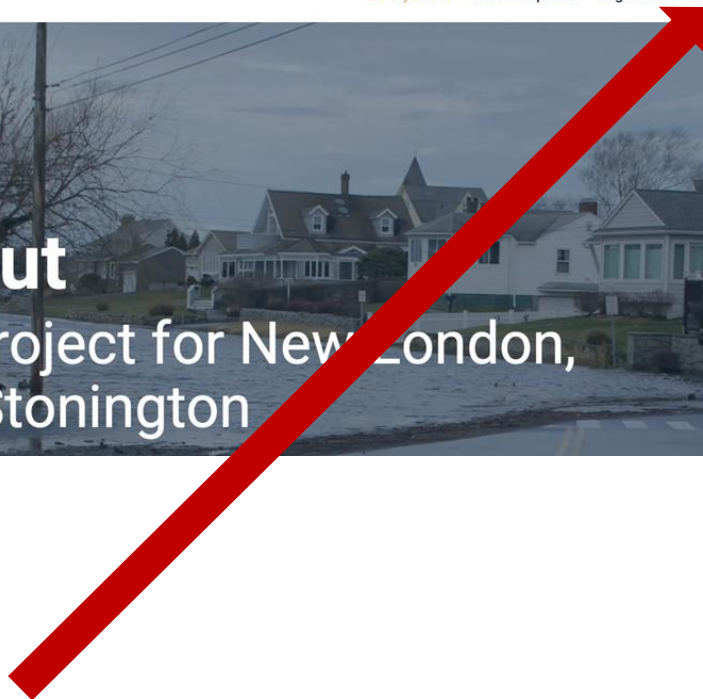


<https://mycoast.org/ct>

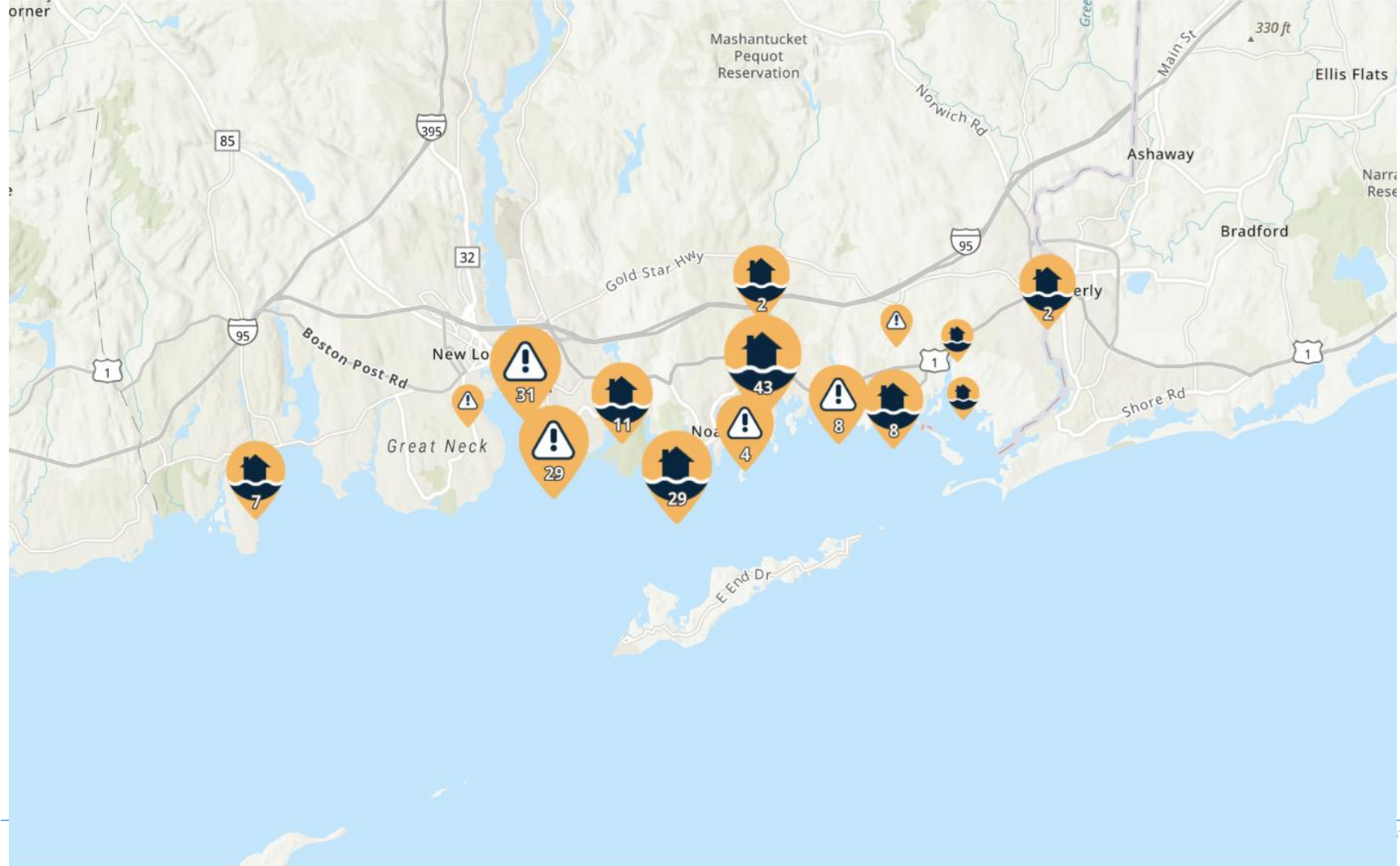
MyCoast:

Connecticut

Join a pilot project for New London,
Groton, and Stonington



Click “Search Reports” to view
recently uploaded photos



Filter Reports

All Report Types ▼

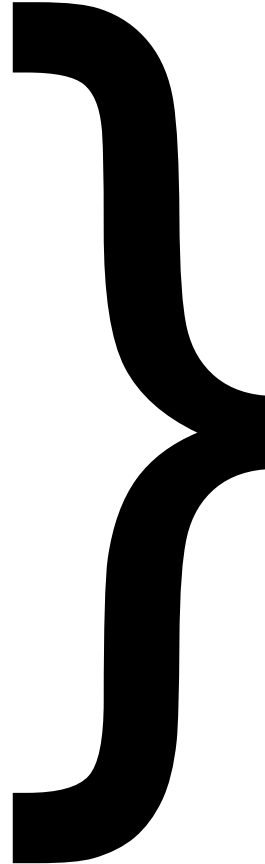
All Counties ▼

All Communities ▼

All Localities ▼

Start date

End date



Filter report results
to match type,
location and/or
date range

Groton Long Point Police Station



Photo Credit: M. White

Example MyCoast Report 1

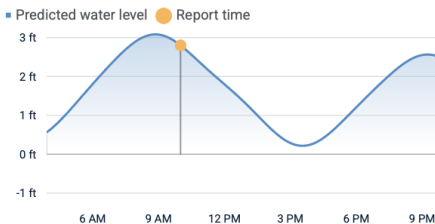
10/20/2025 | 9:57 am

Tidal Overview

1 hours 6 minutes after high tide

Data from **WEST MYSTIC, MYSTIC RIVER** (2.9 miles away)

High Tide (Predicted): 8:51 am, 3.1'



[\(Click here for full tide details from NOAA Tides & Currents\)](#)

Weather Overview



Wind Speed: 23 MPH

Wind Direction: S (180°)

Temperature: 62°F

Rainfall (Calendar Day): 0.287"

Rainfall (Past 24 Hours): 0.81"

[\(Click here for full weather details\)](#)

Pearl Street in Mystic



Photo Credit: K. Lund

Example MyCoast Report 2

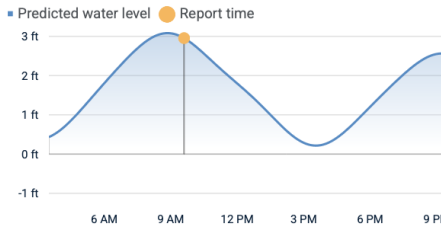
10/20/2025 | 9:35 am

Tidal Overview

0 hours 44 minutes after high tide

Data from WEST MYSTIC, MYSTIC RIVER (0.9 miles away)

High Tide (Predicted): 8:51 am, 3.1'



[\(Click here for full tide details from NOAA Tides & Currents\)](#)

Weather Overview



Wind Speed: 21.9 MPH

Wind Direction: S (180°)

Temperature: 62°F

Rainfall (Calendar Day): 0.22"

Rainfall (Past 24 Hours): 0.81"

[\(Click here for full weather details\)](#)

Pine Island Road in Groton



Photo Credit: S. Schechter

Example MyCoast Report 3

10/20/2025 | 9:57 am

Tidal Overview

1 hours 6 minutes after high tide

Data from **WEST MYSTIC, MYSTIC RIVER** (2.9 miles away)

High Tide (Predicted): 8:51 am, 3.1'



[\(Click here for full tide details from NOAA Tides & Currents\)](#)

Weather Overview



Wind Speed: 23 MPH

Wind Direction: S (180°)

Temperature: 62°F

Rainfall (Calendar Day): 0.287"

Rainfall (Past 24 Hours): 0.81"

[\(Click here for full weather details\)](#)

Shore Avenue in Groton



Photo Credit: C. Patrick

Example MyCoast Report 4

10/13/2025 | 4:24 pm

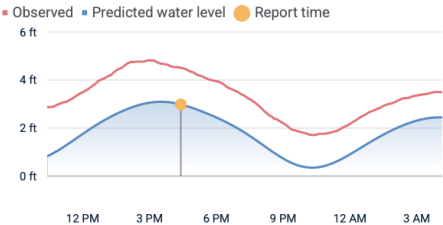
Tidal Overview

0 hours 54 minutes after high tide

Data from **NEW LONDON, STATE PIER** (3.6 miles away)

Water Level (at time of report): 4:24 pm, 4.5'

High Tide (Predicted): 3:30 pm, 3.1'



[\(Click here for full tide details from NOAA Tides & Currents\)](#)

Weather Overview



Wind Speed: 23 MPH

Wind Direction: NE (40°)

Temperature: 55°F

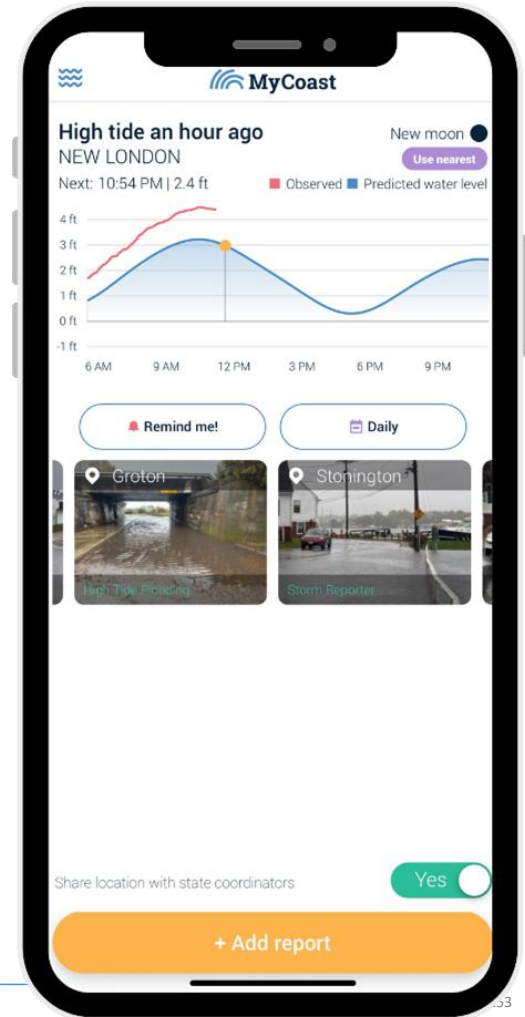
Rainfall (Calendar Day): 0"


Rainfall (Past 24 Hours): 1.15"

[\(Click here for full weather details\)](#)

Add a report


- Click add report and complete the prompts to submit a photo to the MyCoast database






Select report type

Reports available in Connecticut




High Tide Flooding

Capturing the Location & Extent of Tidal Flooding



Storm Reporter

Capturing Connecticut Storms



High Tide Flooding

Take photo

Select photo from library

Select video clip from library

Date of Photo

October 27, 2025

Time of Photo

04:44 PM


Comments

Type here...

1

2

Next →



Storm Reporter

Take photo

Select photo from library

Select video clip from library

Date of Photo

October 27, 2025

Time of Photo


04:45 PM

1

2

3


Next →

 **Storm Reporter**

Impacts to report? ☐ No

1 2 3

← Previous Next →

 **Storm Reporter**

Impacts to report? ☒ Yes

Impact Details

Is there flooding? ☐ No

Impacts to roads? ☐ No


Impacts to structures? ☐ No

Impacts to natural resources? ☐ No

Impacts to beach/shoreline? ☐ No

1 2 3

← Previous Next →

 **Storm Reporter**

Click on map to set location.

Map Satellite Bluff Point State Park
Groton - New London Airport
Shennecossett Golf Course
Eastern Point Beach
Bluff Point, Groton, Ct
New London - Fishers Island
Block Island-New London

Google Keyboard shortcuts Map data ©2025 Google Terms

By clicking "SUBMIT," I authorize this photo & data to be used with or without attribution.

1 2 3

← Previous Submit!

Questions?

For more information, visit
<https://mycoast.org/ct>
or contact us at
MyCoastCT@uconn.edu



Thank you!

Please share feedback on today's
session:

<https://s.zoom.us/j/6PFdH0jUq>



Session 2 – Using Nature-Based
Solutions for Resilience: A Panel
Discussion on Common Challenges &
Strategies for Success

This afternoon! 1-3 PM

Session 3 – LIS Resilience Planning
Support Program: New Round
Available & Showcase of
Completed Projects

Friday, December 5, 10-11:30 AM