



## Long Island Sound Resilience Planning Support Program

### Request for Expression of Interest (RFEI)

**Opportunity Announcement:** The 3rd round of the Long Island Sound (LIS) Resilience Planning Support Program was announced December 1, 2025. This opportunity has a two-step application process: first, an Expression of Interest, and second, an invited Detailed Application. **The deadline for Expressions of Interest is 5:00 PM on January 30, 2026.**

Expressions of Interest that meet the Request for Expression of Interest (RFEI) Alignment Criteria will be invited to submit a Detailed Application, which will be due February 27, 2026.

For answers to Frequently Asked Questions (FAQ) see the [FAQ Document](#) & [Assistance Programs Flow Chart](#).

[Program Summary](#)

[Eligible Entities](#)

[Eligible Project Types](#)

[Support and Duration](#)

[Application Instructions](#)

[Review and Selection Process/Timeline](#)

[Application Evaluation Criteria](#)

[Candidate Selection Criteria](#)

[Awardee Selection Criteria](#)

[Award](#)

[US EPA Funding](#)

## Program Summary

### *Long Island Sound Resilience Planning Support Program*

With funding from the United States Environmental Protection Agency (US EPA) through the Long Island Sound (LIS) Partnership and guidance from the Sustainable and Resilient Communities (SRC) Work Group and dedicated Sustainable and Resilient Communities Extension Professionals (SRC EPs), New York Sea Grant (NYSG) and Connecticut Sea Grant (CTSG) released the 3rd round of the LIS Resilience Planning Support Program. The program provides municipalities, nonprofits, and community organizations assistance with planning for sustainability and resilience-focused projects that will benefit communities within or partially within the [Long Island Sound \(LIS\) Coastal Boundary](#). The planning support offered through this program aims to help communities facing capacity and resource barriers assess local environmental risks, conceptualize project ideas, and conduct preliminary planning efforts to prepare for future funding opportunities that support project design and implementation. **Only projects in the planning and/or preliminary design phase are eligible.**

Entities who apply to the LIS Resilience Planning Support Program (“Applicants”) should identify a project with guidance from the SRC EPs. NYSG/Cornell University (Cornell) and CTSG/University of Connecticut (UConn) will then competitively procure qualified service providers (“Contractors”) to support a list of candidate projects and determine the most suitable Contractors to provide the support requested. See the Review and Selection Process/Timeline section on page 5 for more detail. Matching funds are not required.

### **Eligible Entities**

**Applicants may submit only one Expression of Interest.** This opportunity is open to municipalities, intermunicipal councils/organizations, nonprofits, non-governmental organizations (NGOs), private voluntary organizations (PVOs), community-based organizations (CBOs), academic entities, and Federally and State recognized Tribes/Nations as well as unrecognized indigenous communities. Applicants should demonstrate a need for planning support services for sustainability and resilience-focused projects that will benefit a community(ies) within or partially within the [LIS Coastal Boundary](#) (within Westchester, Bronx, Queens, Nassau, Suffolk Counties in New York, western Connecticut, and eastern Connecticut; Figure 1). Applicant must be, or demonstrate support from, the landowner(s)/land-holder(s) for the proposed project. **Current Awardees of the Long Island Sound Resilience Planning Support Program are not eligible.** Refer to [Candidate Selection Criteria](#) on page 6 for more detail.

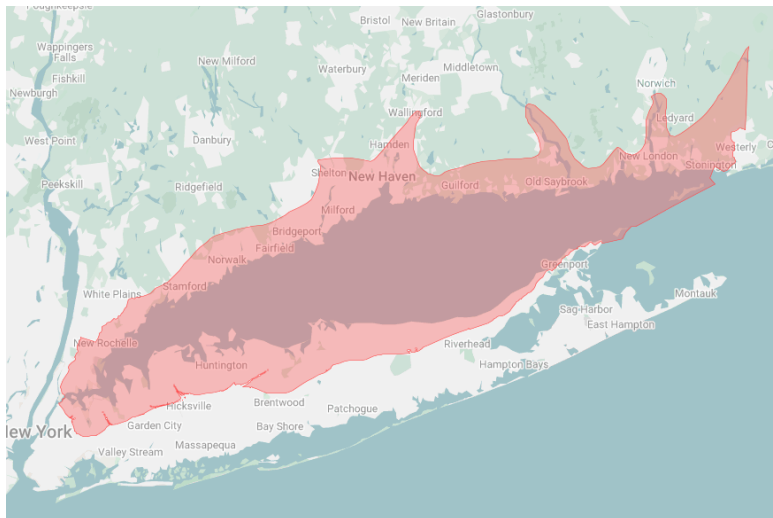


Figure 1. Long Island Sound Partnership Coastal Boundary in pink.

## Eligible Project Types

Communities that participate in the Long Island Sound Resilience Planning Support Program can receive support for project **preliminary planning, scoping, and design**. This support may include, but is not limited to:

- Environmental risk and vulnerability assessment
- Resilience/Adaptation Plan
- Strategy development
- Project prioritization and funding guidance
- Preliminary community engagement
- Project site feasibility and conceptual design

***Projects in the planning and/or preliminary design phase are eligible under this program. Projects that are for implementation or maintenance phases are ineligible and will not be invited to submit a Detailed Application.***

Projects must advance the SRC Goal in the [2025 Long Island Sound Partnership Comprehensive Conservation and Management Plan \(CCMP\)](#) to empower Long Island Sound communities to plan for and respond to environmental challenges in ways that prioritize well-being for all. Projects must also align with SRC Objective 2 or 3, specifically one or more of the following Actions: SRC 2-1, 2-2, 2-3, 3-1, 3-2, 3-3, or 3-4 (see [LIS Partnership CCMP](#), Goal 3: Sustainable and Resilient Communities, pp. 23-26 and Table 1 below).

At the conclusion of the support provided through this program, it is anticipated that Awardees will be ready to take appropriate next steps to implement the recommended resilience-focused projects. As Awardees seek subsequent funding, they can choose to utilize the LIS Resilience Grant Writing Assistance Program (learn more on the [LIS Resilience Resource Hub](#)).

Table 1. 2025 Long Island Sound Partnership CCMP SRC Objectives 2 and 3, Measures of Success, and Actions SRC 2-1, 2-2, 2-3, 3-1, 3-2, 3-3, and 3-4. See the CCMP for a description of each objective and action.

SRC Objective 2: Community-Driven Resilience Planning	
<b>Increase the number of municipalities that identify key resilience priorities through local or regional community-driven planning processes.</b>	
<i><b>Measure of Success:</b> All 135 municipalities within the Partnership coastal boundary identify key resilience priorities.</i>	
SRC 2-1: Develop climate resilience plans and strategies, into existing municipal, regional, and watershed plans.	
SRC 2-2: Coordinate across municipal boundaries to advance collective resilience priorities.	
SRC 2-3: Empower and increase engagement of community members and groups in local and regional resilience planning and decision-making.	
SRC Objective 3: Resilience Initiative Implementation	
<b>Implement initiatives to improve community resilience to flooding and other environmental challenges.</b>	
<i><b>Measure of Success:</b> Communities in the New York and Connecticut portions of the Long Island Sound watershed implement 200 resilience initiatives.</i>	
SRC 3-1: Increase community capacity to implement and manage sustainable and resilient initiatives.	
SRC 3-2: Support the development and adoption of regulations, codes, and ordinances that increase community resilience.	
SRC 3-3: Implement nature-based solutions to address flooding and other climate impacts while providing multiple benefits.	
SRC 3-4: Implement priority infrastructure projects that increase community sustainability and resilience to flooding and other climate impacts.	

## Support and Duration

In this round of the LIS Resilience Planning Support Program up to \$1.5 million is available. In the past two rounds the program funded projects ranging from \$35,000 - \$115,000. The maximum project duration is 18 months, once the contract is executed. Matching funds are not required.

## Application Instructions

The application is a two-step process. To apply, you must:

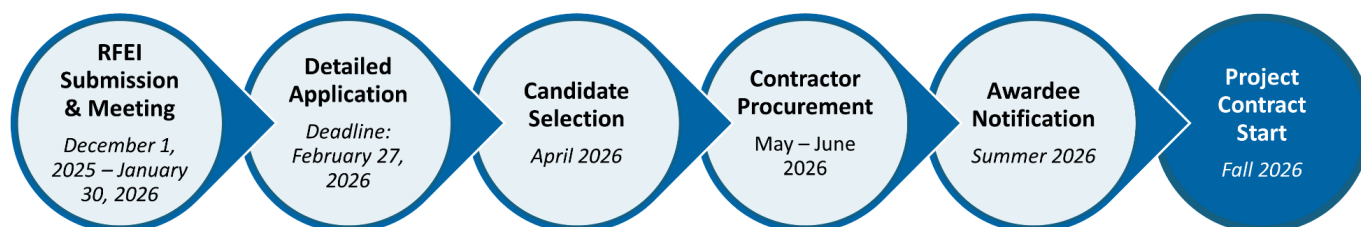
**(1)** Fill out and submit the online [Request for Expression of Interest \(RFEI\) Google Form](#), which includes booking a time to discuss your project with the relevant regional SRC EP, by no later than **5:00 PM on January 30, 2026**. **If you do not schedule a meeting, your Expression of Interest will not be considered.**

(2) If the SRC EP determines that the Expression of Interest meets the below RFEI Alignment Criteria, after review of the RFEI and meeting, the Applicant will be sent a word document version of the [Detailed Application](#) which should be submitted no later than 11:59 PM February 27, 2026.

RFEI Alignment Criteria:

1. Is the project within the LIS coastal boundary?
2. Is the project a preliminary planning, scoping or design project (i.e., not implementation)?
3. Does the project align with SRC Objective(s) 2 & 3 - specifically Actions SRC 2-1, 2-2, 2-3, 3-1, 3-2, 3-3, or 3-4?

## Review and Selection Process/Timeline



Review and Selection Process	Description	Anticipated Timeline
Opportunity Released	RFEI released and application period begins.	December 1, 2025
RFEI Submission	Expressions of Interests may be submitted starting on December 1. <b>No RFEI submissions will be accepted after 5:00 PM on January 30, 2026.</b> When you submit your Expression of Interest, you must book a meeting time to discuss your project with the relevant regional SRC EP.	December 1, 2025 - January 30, 2026
RFEI Evaluation & Meetings	Meet with the relevant regional SRC EP to discuss your project in more detail.	December 15, 2025 - February 6, 2026
Detailed Application Deadline	If the SRC EP determines that the Expression of Interest meets the criteria, after review of the RFEI submission and meeting, the Applicant will be sent	February 27, 2026

	a word document version of the Detailed Application. Detailed Applications are due by 11:59 PM on February 27, 2026.	
<b>Detailed Application Review</b>	At the end of the application period Detailed Applications will be reviewed based on the below Application Evaluation Criteria by NYSG and CTSG SRC EPs.	March 2026
<b>Candidate Selection</b>	Applicants will be notified within approximately 5 weeks of the close of the application period to let them know if they are a candidate to receive support through the LIS Resilience Planning Support Program (hereafter referred to as "Candidates").  Candidates will work with the NYSG and CTSG SRC EPs to develop the project description that will be included within the Request for Proposals (RFP).	April 2026
<b>Contractors Procurement Process</b>	Cornell and UConn will competitively procure qualified contractors to support Candidates through the RFP.	May - June 2026
<b>Award Notification</b>	Once Contractors are hired by Cornell/UConn, Candidates will be notified if they are selected to receive an award (hereafter referred to as "Awardees")	Summer 2026
<b>Anticipated Contract Start</b>	Once Contracts are finalized, Contractors will start providing services to the Awardees.	Fall 2026

## Application Evaluation Criteria

These [Application Evaluation Criteria](#) will be used by the SRC EPs to evaluate Detailed Applications. The Applicant should not fill this out - it is provided as a reference.

## Candidate Selection Criteria

Detailed Applications will be reviewed considering the following Selection Criteria and written feedback will be provided on all Applications. Applicants will be notified within approximately 5 weeks of the close of the application period to let them know if they are a Candidate to receive support through the LIS Resilience Planning Support Program. The program will only fund

projects that have an impact within or partially within the [LIS Coastal Boundary](#) (within Westchester, Bronx, Queens, Nassau, Suffolk counties, western Connecticut, and eastern Connecticut) and for which the Applicant is, or has demonstrated support from, the landowner(s)/land-holder(s) for the proposed project.

Candidate selection will be determined considering the following:

- Alignment with SRC priorities - Highest scoring projects will advance one or more actions, focus primarily on climate resilience, and also contribute to a SRC Measure of Success.
- Candidate status - Priority will be given to new Applicants (new Candidates) that have not received planning support in previous rounds of the Planning Support Program and Candidates from previous Rounds of the Planning Support Program that were not selected as Awardees.
- Geographic balance of all Awardees selected/considered for support through previous rounds of the Planning Support Program.
- Overall evaluation score.

## **Awardee Selection Criteria**

Once Contractors are hired by Cornell/UConn, Candidates will be notified if they are selected to receive an award. **All award determinations are subject to availability of funds and resources to support the needs identified in the Application and the engagement of a Contractor qualified to complete the work.** Revisions to Candidate project scope may be required before or after reaching a final decision. If there are not enough funds to support all Candidates, priority will be given to:

- Candidates from previous Rounds of the Planning Support Program that were not selected as Awardees.
- New Candidates that have not received planning support in previous rounds of the Planning Support Program.
- Geographic balance of all Awardees selected/considered for support through previous rounds of the Planning Support Program.
- Overall evaluation score.

## **Award**

Each Awardee will be sent an Acceptance of Support Letter from NYSG or CTSG (depending on whether the community is in NY or CT) to outline the agreement and expectations for the Awardee, Contractor, and NYSG/CTSG. NYSG (through Cornell) or CTSG (through UConn) will then develop a contract with the selected Contractor to provide services for each Awardee. The Contractor will carry out the tasks identified in the contract, working in consultation with the

Awardee. Awardees may be asked to approve products and deliverables before the Contractor is paid. In all cases, the final required deliverable is a complete set of all final products, reports, or materials developed through the services. Payment to the Contractor will take place in compliance with Cornell/UConn policies and procedures. **Note that no funds will be dispersed to or pass through the Awardee.**

*\*All final products funded through this agreement must be in alignment with current [Federal administrative priorities](#) and the [Long Island Sound Partnership 2025 Comprehensive Conservation and Management Plan \(CCMP\)](#).*

## **US EPA Funding**

This project has been funded wholly or in part by the United States Environmental Protection Agency under assistance agreement LI-96244522 to New York Sea Grant, Cornell University and assistance agreement LI-00A01412 to Connecticut Sea Grant, University of Connecticut. The contents of this document do not necessarily reflect the views and policies of the U.S. Environmental Protection Agency, nor does the U.S. EPA endorse trade names or recommend the use of any products, services or enterprises mentioned in this document. Funding is subject to Uniform Guidance (2 C.F.R. Part 200).