

Borough of Fenwick, CT Credit: Sarah Schechter

Sustainable and Resilient Communities

3rd Annual Connecticut Funding Workshop

Tuesday, March 31, 2026 | 9:30 AM – 2:30 PM



10:00 AM	Welcome
10:10 AM	Long Island Sound Sustainable & Resilient Communities Resources & Assistance Programs
10:20 AM	Lightning Talk Presentations from Funders
11:05 AM	Stretch Break
11:15 AM	Lightning Talk Presentations from Funders
12:00 PM	Lunch
12:45 PM	Successful Awardees Panel
1:15 PM	Roundtable Discussions
2:15 PM	Closing Remarks



Please silence
your phones



Save questions
for designated
times

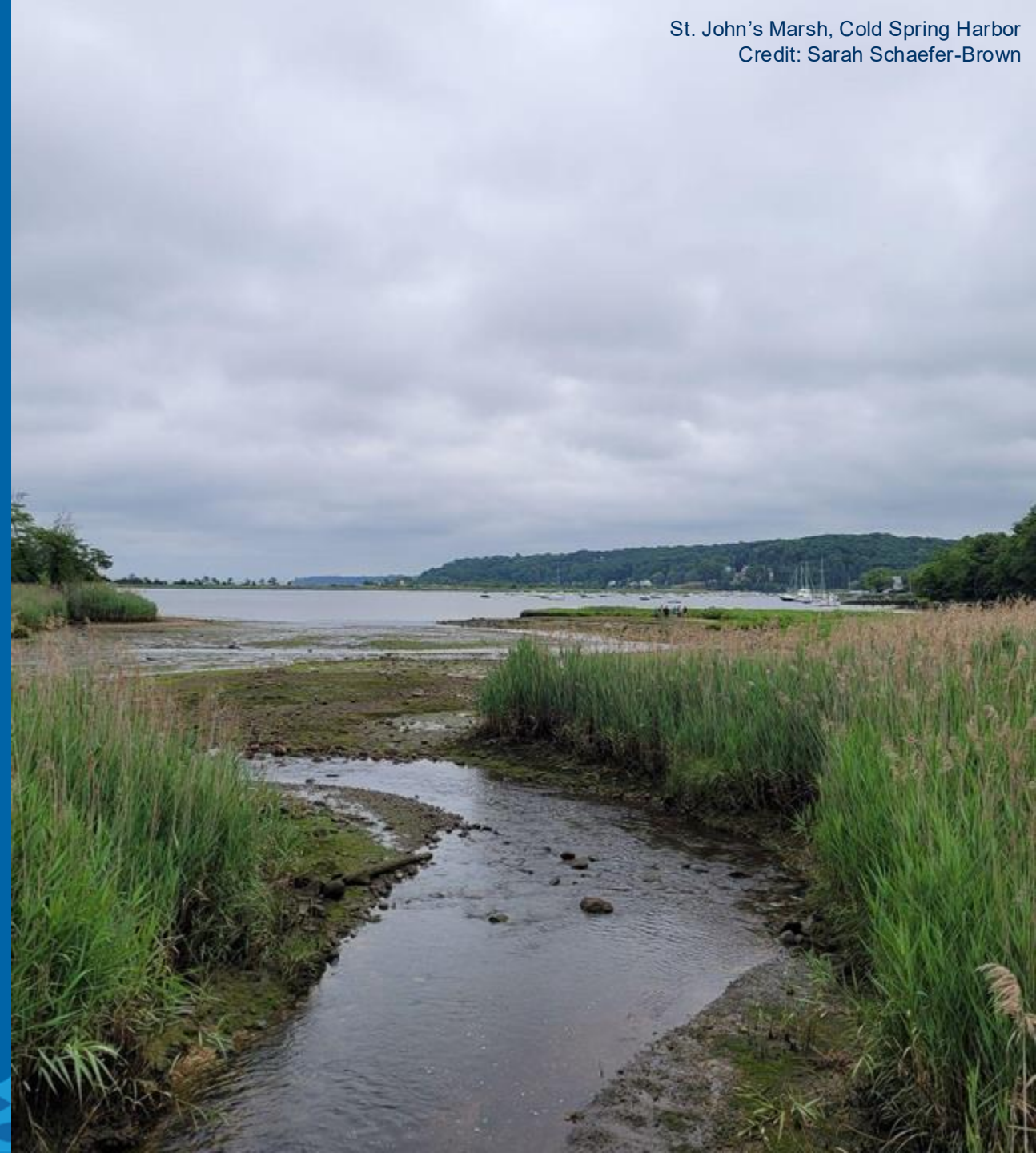


Be respectful and
give everyone a
chance to participate



Sustainable and Resilient Communities Resources & Assistance Programs

St. John's Marsh, Cold Spring Harbor
Credit: Sarah Schaefer-Brown





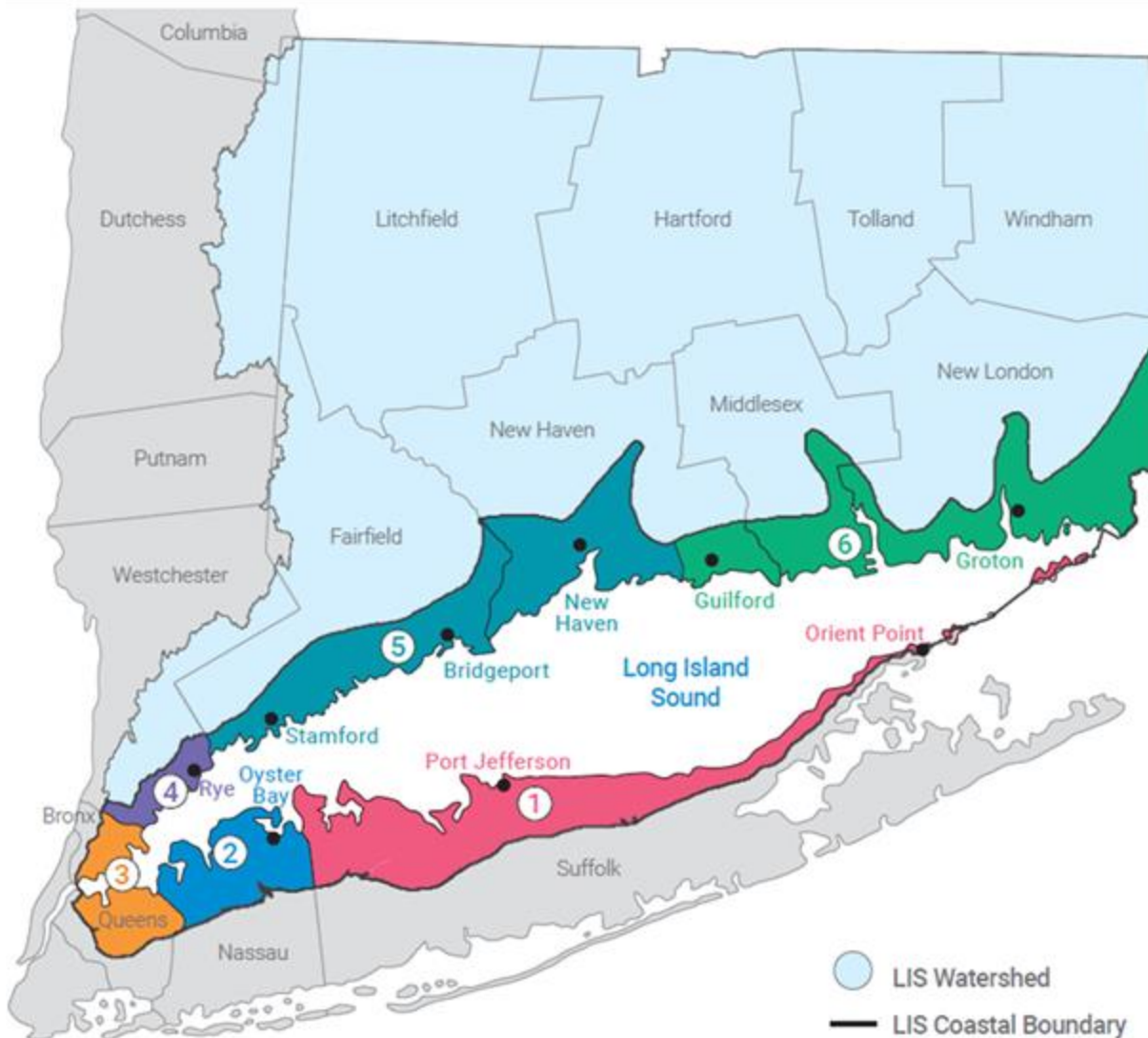
WHO WE ARE

The Long Island Sound Partnership is a group of organizations, agencies, scientists, and community members working together to protect and restore Long Island Sound. We support clean waters, healthy habitats, thriving wildlife, resilient coasts, and an engaged public.



- Funds for LIS Partnership come through annual appropriations authorized by the Clean Water Act (§119 and 320)
- EPA staff direct the Long Island Sound Office, work with partnership to administer program funds each year to implement the CCMP
- LIS Partnership provides funds through direct grants and competitive grant programs, including Long Island Sound Futures Fund, Long Island Sound Community Impact Fund, the Research Program, and the SRC Assistance Programs.

The SRC Extension Professionals Team



- 1** Suffolk County
Elizabeth Hornstein
- 2** Nassau County
Sarah Schaefer-Brown
- 3** NYC - Bronx & Queens
Ben Goldberg
- 4** Westchester County
Sara Powell
- 5** Western CT
Deb Visco Abibou
- 6** Eastern CT
Sarah Schechter

Sustainable & Resilient Communities Goal:

Empower Long Island Sound communities to plan for and respond to environmental challenges in ways that prioritize well-being for all.



Informed Decision-Makers

Grow the number of municipal, nonprofit, and community leaders receiving training and support to increase capacity for adaptation to environmental challenges.



Community-Driven Resilience Planning

Increase the number of municipalities that identify key resilience priorities through local and/or regional community-driven planning processes.



Resilience Initiative Implementation

Implement initiatives to improve community resilience to flooding and other environmental challenges.



Long Island Sound Resilience Resource Hub

www.lisresilience.org



**Finding climate
resources just
got easier**

**Your hub for Long
Island Sound Resilience
Resources is here!**

LISRESILIENCE.ORG

New Flooding Tool

USGS Compound Flood Hazard Mapper

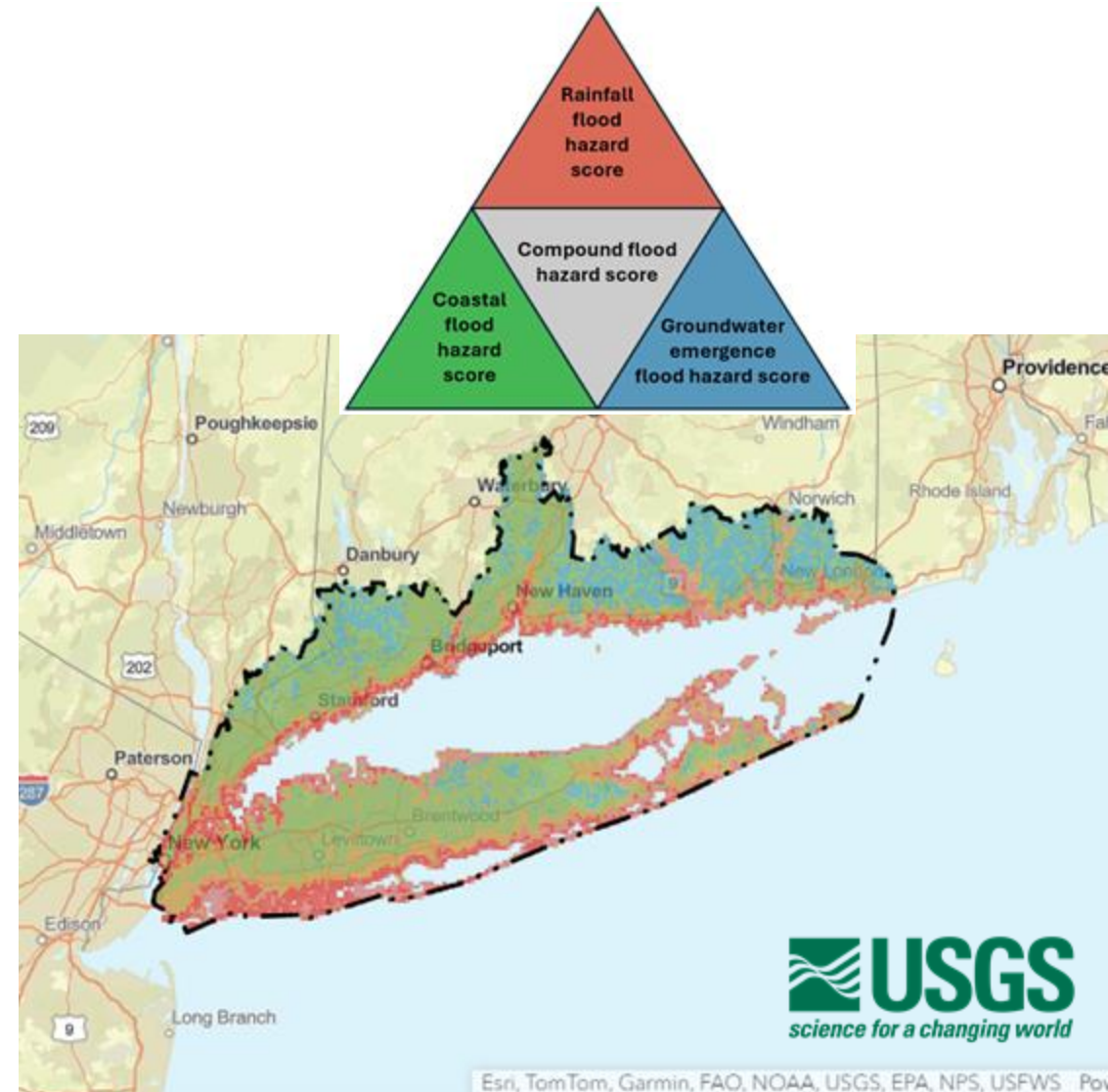
Mapper includes Long Island, NYC, Westchester and coastal areas of southern CT

Displays susceptibility to:

- Coastal flooding
- Flash flooding
- Groundwater flooding
- Compounding (Co-occurrence of drivers)

Includes supplemental maps

Tool will help communities understand areas that may be vulnerable to flooding



Credit: USGS Compound Flood Hazard Mapper

Funding Database

Filters

Select one or more of the filters below to find relevant tools and resources for your needs

Status

Select a Status

Planning Phase

Select a Planning Phase

Location

New York State

Topic

Select a Topic

Eligibility

Select an Applicant Type

Reset Filters

Apply Filters

Need help deciding where to start?

Learn how to identify, prioritize, and implement high-impact projects

[View Resilience Planning Guide](#)

Case Studies

See how other communities are building climate resilience

[View Case Studies](#)

Grant writing assistance available! – [Click here to learn more](#)

Funding

Open: Due on Nov 21, 2025

6 weeks

remaining to apply

SSK-100K

Long Island Sound Community Impact Fund (LISCIF)

Restore America's Estuaries is excited to announce the third round of funding for the Long Island Sound Community Impact Fund. Up to \$1,200,000 in competitive funding will be awarded to support projects in New York and...

New York State Connecticut State

Erosion Flooding Habitat Nature-based Solutions

Environmental Health Hazards Stormwater Management

Water Quality Planning Recreation & Access

Extreme Weather & Storms Community Engagement Wetlands

Waste Management Marine Debris Green Infrastructure

[View Details](#)

Funding

Rolling

NYS Homes and Community Renewal Resilient Retrofits

New York State Homes and Community Renewal has expanded the Resilient Retrofit program and will make available a combination of low-interest loans and grants to low and moderate income single-family homeowners whose...

New York State

Flooding Environmental Health Hazards Sea Level Rise

Extreme Weather & Storms Funding/Grants

[View Details](#)

Funding

Rolling

EPA Water Technical Assistance

EPA WaterTA aims to assist communities with applications for federal funding, quality infrastructure, and reliable water services in partnership with drinking water, wastewater, and stormwater utilities and local government. If...

New York State Connecticut State

Environmental Health Hazards Stormwater Management

Water Quality Infrastructure Funding/Grants



Case Studies



Filters

Select one or more of the filters below to find relevant tools and resources for your needs

Location

Select a Location

Topic

Select a Topic

Reset Filters

Apply Filters

Need help deciding where to start?

Learn how to identify, prioritize, and implement high-impact projects

[View Resilience Planning Guide](#)

Funding Database

Find funding for your project

[View Funding Database](#)

Case Study Project

Rye, NY

Edith G. Read Wildlife Sanctuary Living Shoreline

Shoreline erosion problems had been noted at Edith G. Read Wildlife Sanctuary in Rye, NY in the early 2000s, and after the devastation caused by Hurricane Sandy in 2012 and subsequent storms, it was clear there was a...

New York State

Habitat Community Engagement Wetlands

[View Details](#)

Case Study Project

Halesite, NY

Halesite Park Shoreline Restoration

With support from the Long Island Sound Resilience Grant Writing Assistance Program, in December 2024 1653 Foundation was awarded \$549,955 from the NYSDEC Water Quality Improvement Project (WQIP) Program to fund the...

New York State

Erosion Habitat Land Use Nature-based Solutions

Stormwater Management Water Quality Recreation & Access

Wetlands Green Infrastructure

[View Details](#)

Case Study Plan

Old Saybrook, CT

Planning to Restore Chalker and Chanman Beach



Resilience Planning Guide

A Guide to Resilience Planning for Long Island Sound Communities

MOVE PROJECTS FROM IDEA TO IMPLEMENTATION



A Guide to Resilience Planning

Use the PERSISTS criteria below to help identify, prioritize, and implement high-impact projects

PERSISTS Framework adapted and adopted from Connecticut Institute for Resilience and Climate Adaptation. (2020). Resilient Connecticut Planning Framework.

P

Permittable

E

Engaged

R

Realistic

S

Safe

I

Innovative

S

Scientific

T

Transferable

S

Sustainable

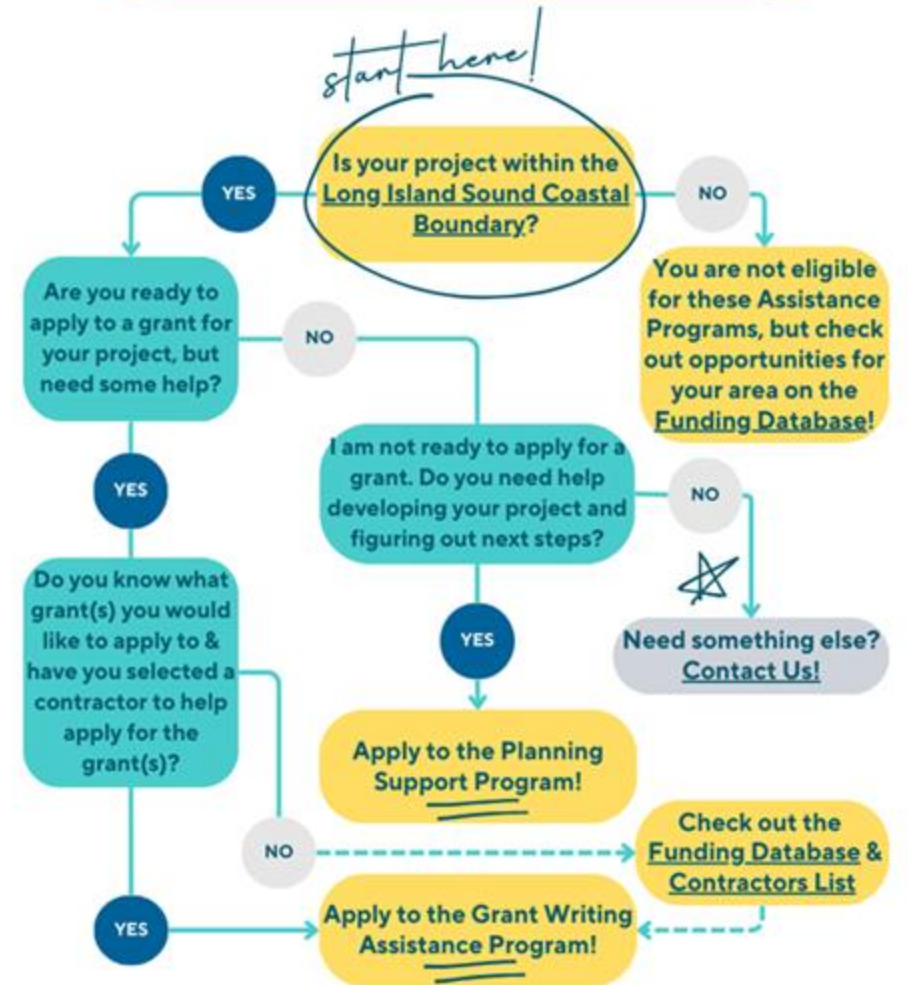


SRC Resilience Assistance Programs



What Assistance Program is right for me?

Click on the image to interact



LIS Resilience Grant Writing Assistance Program

Focus: Grant Preparation and Writing

No Match!

Eligible Applicants:
Municipalities, Nonprofits,
Community Organizations

Rolling: Open until all available funding has been allocated

LIS Resilience Planning Support Program

Focus: Planning, Preliminary Design, and Project Scoping

No Match!

Eligible Applicants:
Municipalities, Nonprofits,
Community Organizations

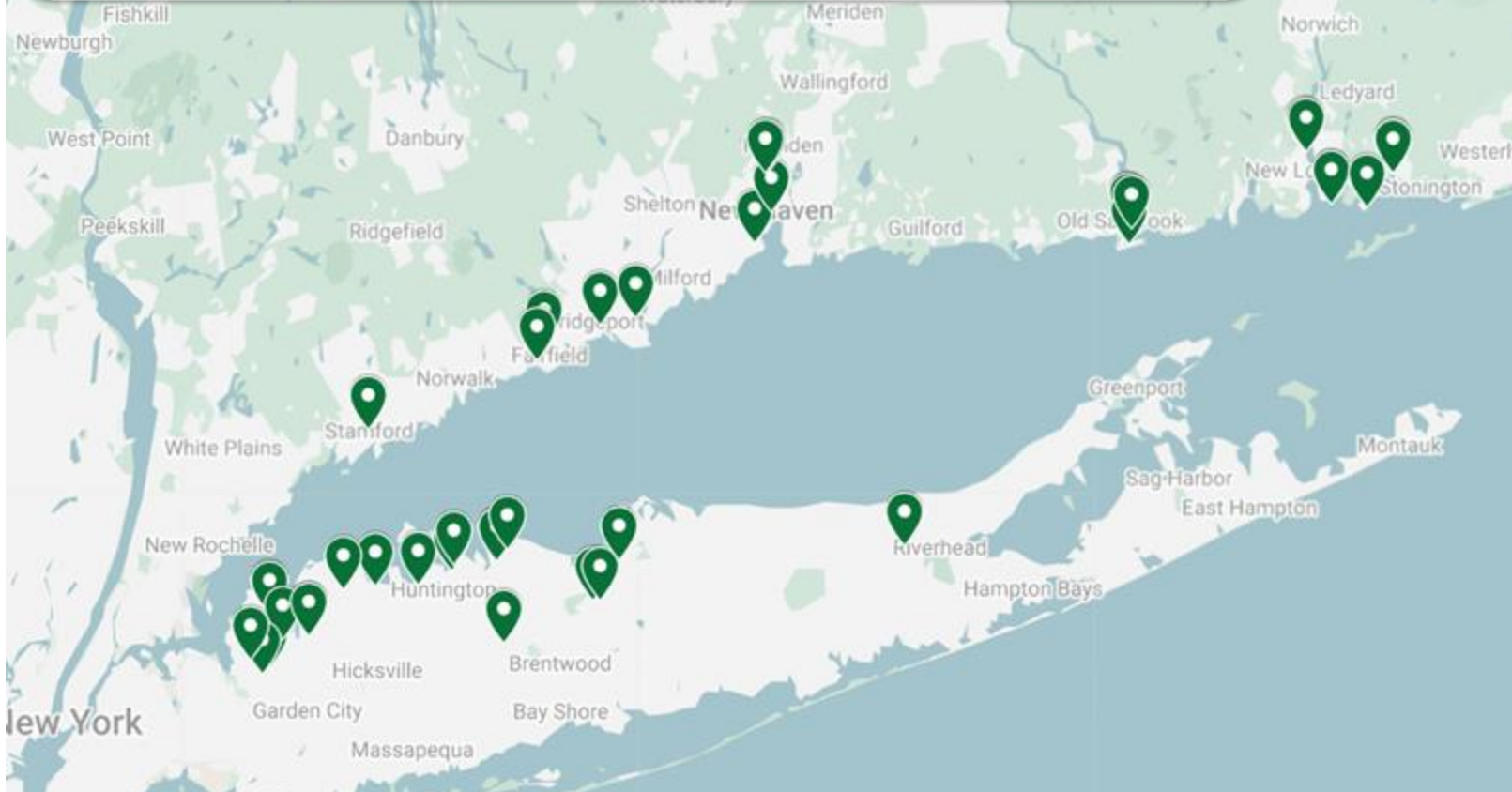
*Released December 1, 2025
Reviewing Submitted Applications Now!*

Grant Writing Assistance Program

45 Grant Proposals Supported

32% success rate (first 3 years of the program)

\$22 to \$1 ROI (direct + indirect support)



Project Types

- Watershed Plans
- Feasibility and engineering studies for beach, wetland, and living shoreline projects
- Implementation of stormwater, green infrastructure, habitat restoration, public access improvements
- Community outreach engagement, education, and participatory science projects
- Shell recycling and oyster gardening programs

Round 1 (Gray points)

Projects are completed or nearing completion

Awarded nearly \$1.1M to 15 Communities

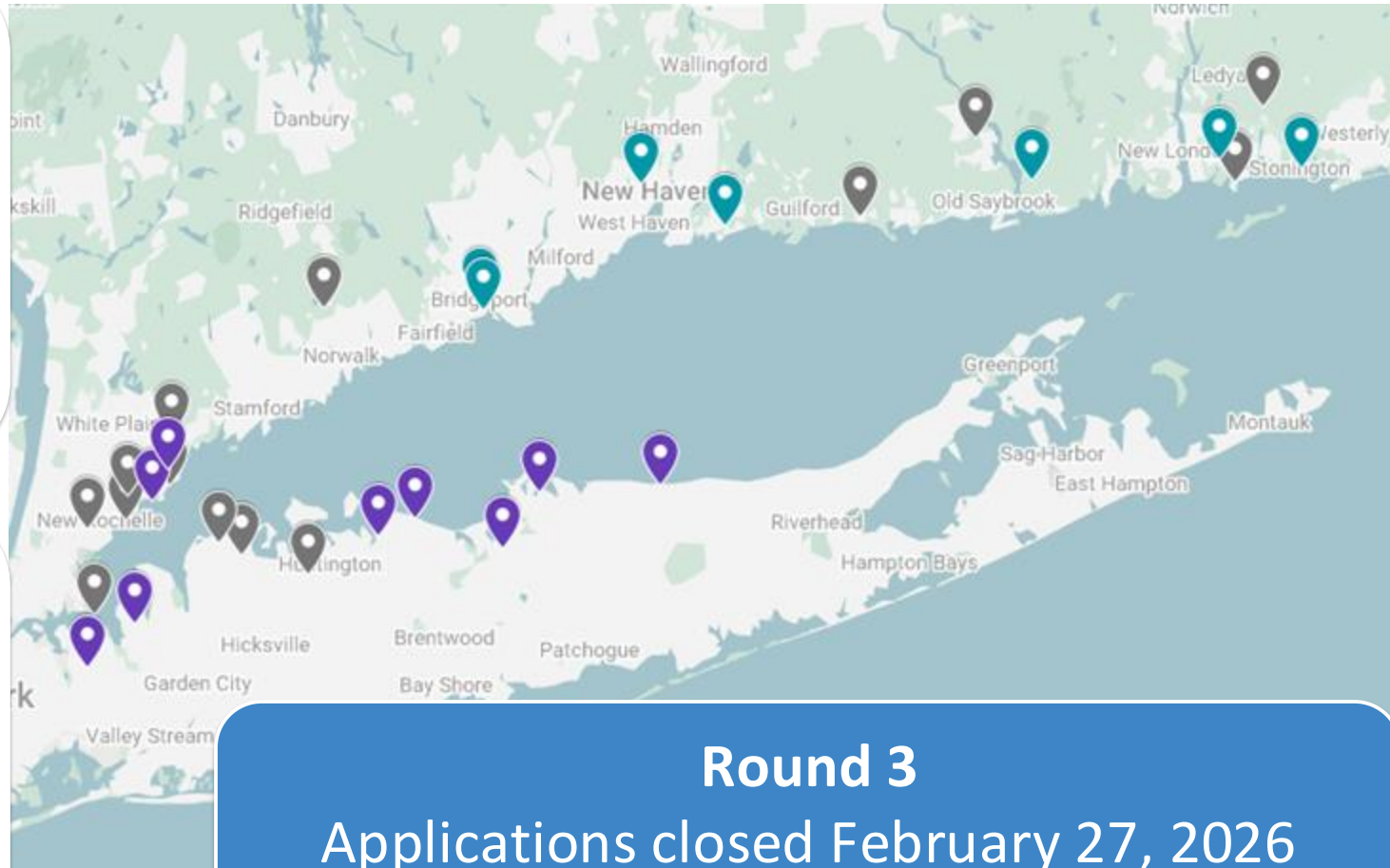
5 in CT and 10 in NY

Round 2 (Teal & Purple points)

Projects started Fall 2025

Awarded Over \$1 Million to 16 Communities

7 in CT and 9 in NY



Round 3

Applications closed February 27, 2026

Up to \$1.5 Million available



Lightning Talk Presentations from Funders and Technical Assistance Programs





LONG ISLAND SOUND
PARTNERSHIP

Federal-level Programs/Infrastructure



Robert Hotaling

Agency: Department of Revenue Services (DRS), CTBILT

Role: Deputy Advisor for Infrastructure & Federal Funds

What funding program you're here to represent: We help businesses and municipalities navigate infrastructure-related federal funding programs and facilitate with federal and state agencies as the NGA state infrastructure coordinator.

BIL/IIJA Funding Programs



- **What does your program assist with?**
 - We help facilitate federal funding programs related to infrastructure as the NGA state infra coordinator.
- **What are the priorities for your next funding cycle?**
 - Supporting businesses and municipalities pursue upcoming NOFOs.
- **When is the funding available?**
 - **Transportation/Infrastructure (DOT):** MARAD PIDP (**\$450 million** in FY26 for port infrastructure development) extended the deadline for applications to **March 27, 2026**.
 - **Grid Resilience (DOE):** SPARK (**\$1.9 billion** for grid upgrades) requires concept papers by **April 2, 2026**, and full applications by **May 20, 2026**. Project selections are expected in August 2026.
 - ***Water Infrastructure (EPA):** For FY26, Congress appropriated (a) and **\$3 billion** for Lead Service Line Replacement Projects and **\$800 million** for Grants for Emerging Contaminant Projects under DWSRF; and (b) **\$225 million** for Grants for Emerging Contaminant Projects and **\$893 million** for Community Project Funding/CDS under CWSRF. **Watch for NOFOs.**

BIL/IIJA Funding Programs



- **How much \$ is available?**
 - **EPA** (\$3B DWSRF Lead Service Line Replacement, \$893M CWSRF CPF/CDS, \$800M DWSRF / \$225M CWSRF in Grants for Emerging Contaminants)
 - **DOT** (\$450M MARAD PIDD), **DOE** (\$1.9B SPARK)
- **Are there match requirements?**
 - Typically, yes – see each NOFO for more details.
- **Who is eligible?**
 - Typically state, local, tribal governments, and special districts.

Federal – DOT FHWA 2023 CFI Grant Awards



- **DOT FHWA 2023 Charging and Fueling Infrastructure (CFI) Grant program**
- In January 2024, DEEP was awarded **\$14.65 million** to install (8) dual-port Level 2 charging stations and (96) single-port direct-current fast chargers (DCFC) in 7 municipalities (**Hartford, East Hartford, New Haven, Bridgeport, Stamford, Groton, Barkhamsted**).
- In partnership with DEEP, CTBILT assisted in identification, advisory/analysis, gathering support letters, submitting applications and post-award follow-up.
- ***We've had and will continue in-person meetings with these mayors.***

Federal – Southington Water PFAS



- **Project:** Southington Water Department - PFAS
- **Funding:** \$3M CDS Grant
- **How CTBILT helped:** Cmsr. Boughton cosigned a joint-LOS in **May 2025**. On **Jan 27th**, MHGA informed CTBILT they were awarded \$3M CDS for Interior & EPA for Wells 9 and 10 PFAS Treatment. Separately, CTBILT met with SWD/MHGA on **Jan 10** to discuss delays related to water infra federal funding and brainstorm other funding. By **Jan 31**, we advocated on their behalf to DPH who had team members follow up. They are currently in pursuit for additional support for Wells 7A and 8 Manganese Treatment Plant project.



State – Vernon \$2.5M Grant Award



- **Project:** Daniels Mill cleanup
- **Funding:** \$2.5M DECD CIF Grant
- **How CTBILT helped:** We regularly visit mayors and first selectmen to listen to their visions and initiatives, huddle then provide feedback. We met with Mayor Champagne and John Kleinhans to brainstorm on **Oct 1, 2025**. By **Nov 3rd**, we sent a summary email listing programs, contacts, eligibility (DECD CIF + OZ, DOH Open Call + Build for CT + HTF + Incentive Housing Zone + CDBG + MSIF, CMDA). *With our recommendations, they pursued CIF and were awarded \$2.5M by **March 10, 2026**.*



How CTBILT Can Help You



- **Identify and analyze federal, state and local funding opportunities**
- **Serve as a liaison to facilitate conversations with federal and state agencies**
- **Provide/gather letters of support for infrastructure projects**

DOI Severe Weather Advisory Council



Rob co-chaired the CT DOI Severe Weather Mitigation and Resiliency Advisory Council to develop strategies to help homeowners and businesses, particularly in high-risk areas, reduce the impact of flooding and wind events.



2025 Final Report: The council recommends launching a pilot program for fortified roof retrofits, providing tax and insurance credits for mitigation, and increasing public education on property strengthening.

Actionable Goals: The council aims to stabilize the insurance market by fostering a more resilient infrastructure, decreasing the financial and emotional burden of natural disasters.

Jake Ecke & Ellen Graham

Offices of Senator Murphy and Senator Blumenthal

Congressionally Directed Spending (CDS)

Congressionally Directed Spending

The logo for Chris Murphy, featuring the name "CHRIS MURPHY" in green and black text, with a green outline of the state of Connecticut to the right of the name.The logo for Richard Blumenthal, featuring the name "RICHARD BLUMENTHAL" in white text on a dark blue background, with "U.S. SENATOR FOR CONNECTICUT" in smaller white text below it, and three white stars above the name.

- **What does your program fund with?**
 - CDS provides funding for a specific project in a specific location.
- **What are the priorities for your current funding cycle?**
 - Our offices support projects that have a measurable impact on the community and articulate a clear goal. The Senate Appropriations Committee ultimately makes final selections.
- **When is the funding available?**
 - Applications are due by April 6th, 2026. Funding follows the federal appropriations process and can take a year or more to reach recipients.

Congressionally Directed Spending

The logo for Chris Murphy, featuring the name "CHRIS MURPHY" in green and black text with a green outline of the state of Connecticut to the right.The logo for Richard Blumenthal, featuring the name "RICHARD BLUMENTHAL" in white text with "U.S. SENATOR FOR CONNECTICUT" below it, and a red outline of the state of Connecticut above the name.

- **How much \$ is available?**
 - There are many accounts within CDS and they can fund projects at different amounts. Generally speaking, most projects are in the \$100k-\$2 million range.
- **Are there match requirements?**
 - Some CDS accounts require a match. However, not all do. Our CDS guide discusses which accounts have matching requirements.
- **Who is eligible?**
 - Non-profits, municipalities, state agencies. For-profit entities are not eligible.

Additional Guidance

The logo for Chris Murphy, featuring the name "CHRIS MURPHY" in green capital letters with a green outline of the state of Connecticut to the right of the name.The logo for Richard Blumenthal, featuring the name "RICHARD BLUMENTHAL" in white capital letters with three stars above it, and "U.S. SENATOR FOR CONNECTICUT" in smaller white capital letters below it, all on a dark blue background.

- Application link is available on Senator Murphy and Senator Blumenthal’s websites. You only have to submit one application – it goes to both offices.
- Entities can submit more than one application.
- CDS is highly competitive. Unfortunately, we receive many more applications than will be funded in a given year.
- The CDS guide on our websites will help lead you to the right account. Our teams are available to answer any questions you have about the process.
 - You can find the guide at murphy.senate.gov under the services>appropriations tab.
 - You can find it on Blumenthal.senate.gov under the services>federal funding tab.
- **Please contact us with any questions:**
 - Jacob_ecke@murphy.senate.gov
 - Ellen_graham@blumenthal.senate.gov



LONG ISLAND SOUND
PARTNERSHIP

Long Island Sound-Specific



Long Island Sound Community Impact Fund



RESTORE
AMERICA'S
ESTUARIES



Shahela Begum

Restore America's Estuaries

Program Director

Long Island Sound Community Impact Fund (LISCIF)

sbegum@estuaries.org

<https://estuaries.org/liscif/>



Long Island Sound Community Impact Fund



RESTORE
AMERICA'S
ESTUARIES



- **What does your program fund?**
 - Projects located in environmentally distressed communities to address environmental issues and improve the quality and accessibility to the Long Island Sound.
 - LISCIF also provides technical assistance for capacity building for applicants located in communities affected by environmental and human health risks.

Long Island Sound Community Impact Fund



RESTORE
AMERICA'S
ESTUARIES



- **What are the priorities for your next funding cycle?**
 - Projects that result in quantifiable pollutant prevention or reduction.
 - Restoring habitat within the Important Coastal Habitat Types targeted by LISS.
 - Projects that foster a diverse balance and abundant populations of fish, birds, and wildlife.
 - Public engagement, knowledge, and stewardship.
 - Projects that enhance community resilience and sustainability.
 - Planning and design that set-the-stage for implementation of water quality projects, eligible habitat restoration projects and resilience projects.
 - Community-based science projects.
 - Data management and integration projects.
 - Other similar activities that the applicant proposes, and EPA approves, that are consistent with Section 119 of the Clean Water Act.
 - LIS Partnership Comprehensive Conservation and Management Plan Themes

Long Island Sound Community Impact Fund



RESTORE
AMERICA'S
ESTUARIES



- **When is the funding available?**
 - September 1, 2026
- **How much \$ is available?**
 - \$1,200,000
- **Are there match requirements?**
 - No match requirements.
- **Who is eligible?**
 - Tribes, non-profit organizations, state, county, local governments, and their subdivisions, and academic institutions.

Long Island Sound Community Impact Fund Additional Guidance



RESTORE
AMERICA'S
ESTUARIES



- Attend informational webinars in September, when the RFA releases.
- Schedule a 1-1 call in case you have any questions or need support in submitting your Letter of Intent.
- Attend available trainings on grant writing and creating a federal budget in the Fall if you think you will need support.
- Get started on your SAM registration if you don't have one or renewal.



Carrie Clingan

National Fish and Wildlife Foundation

Program Director, Northeast Watersheds

Long Island Sound Futures Fund

www.nfwf.org/lisff



Long Island Sound Futures Fund



- **What does your program fund?**
 - Projects to fully restore the health and living resources of Long Island Sound
- **Program Priorities**
 - Implementation
 - Education and Public Participation
 - Design/Planning
- **Timeline: March 10 - May 19**

Long Island Sound Futures Fund



- **How much \$ is available?**
 - Dependent on EPA funding, anticipated will be about \$12M
- **Are there match requirements?**
 - 1:0.5 match ratio
 - \$100,000 grant would require \$50,000 in matching contributions
- **Who is eligible?**
 - Non-profit 501(c) organizations, state government agencies, local government, municipal government, Tribal Governments/Organizations and educational institutions

Additional Guidance



Application Support

- **LIS Resilience Grant Writing Assistance Program**
Contact LISresilience@gmail.com
- **NFWF Proposal Labs**
Discussions with NFWF staff to discuss project ideas or ask application questions



Scan this QR code to book!

Tripp Killin

Agency: Jeniam Foundation, member of the LIS Funders Collaborative

Role: Executive Director

What funding program you're here to represent: LIS Stewardship Fund

Long Island Sound Stewardship Fund



- **How much \$ is available?**
 - \$400-\$600k, \$20-\$100+k projects
- **Are there match requirements?**
 - No match
- **Who is eligible?**
 - Nonprofit 501(c)(3) orgs

Long Island Sound Stewardship Fund



- **What does your program fund/assist with?**
 - Nonprofits work on the CCMP
- **What are the priorities for your next funding cycle?**
 - Capacity Building, New Collaboration, Piloting and Planning
- **When is the funding available?**
 - Funding available in April



LONG ISLAND SOUND
PARTNERSHIP

Climate Adaptation/ Green Infrastructure/Environment





Jennifer O'Brien

Community Foundation of Eastern Connecticut

Program Director

CFECT's environmental grant-making program

Environmental Grants



- **What does your program fund?**
 - Environmental grantmaking
- **What are the priorities for your funding cycle?**
 - Conservation & resiliency
 - Environmental education
 - Environmental justice
- **When is the funding available?**
 - Applications are due annually in January (date TBD).
 - Applications will open by mid-November
- **How much \$ is available?**
 - A total of approximately \$1 million in grants will be made.
 - Average grant is \$25,000 to \$30,000, with a range of \$10,000 to \$50,000.
- **Are there match requirements?**
 - No
- **Who is eligible?**
 - Programs benefiting CFECT's 42 town region in eastern CT (see website for specifics)
 - 501c3 nonprofit organizations

Additional Guidance



- **What are some tips for success?**
 - If you are a new applicant, review the guidelines at www.cfect.org
 - Call a program officer to discuss your application idea.
 - Be sure you are delivering a program in our 42 towns of ECT.
 - Highlight your emphasis on environmental justice.



Erik Bedan

Connecticut Department of Energy and Environmental Protection (CT DEEP)

Supervising Environmental Analyst, Watersheds Program

Federal Clean Water Act § 319 Nonpoint Source Management Grant

Section 319 NPS Grant Program



- **What does your program fund/assist with?**
 - Planning or implementation projects that address nonpoint source (NPS) water pollution.
- **What are the priorities for your next funding cycle?**
 - Anticipate similar to FY26 priorities such as: Projects implementing a Watershed Based Plan; Projects within priority watersheds; Climate Resiliency through NPS solutions; High impact or ready-to-implement projects; Agricultural land use projects.
- **When is the funding available?**
 - Typically: annual notice is between December-March; awards announced by October; execute DEEP Contracts shortly after

Section 319 NPS Grant Program



- **How much \$ is available?**
 - About \$1.2 million annually is available for awards
- **Are there match requirements?**
 - 40% match, potential support from state dollars
- **Who is eligible?**
 - Local/state government, quasi-state agencies, schools/universities, nonprofits, community groups. Recipients must be registered with the CT Secretary of State.

Section 319 NPS Grant Program

Additional Guidance



- **Applicants should consider:**
 - Addressing NPS pollution, including milestones and measurable outcomes that the project anticipates to have upon completion.
 - Stormwater permit requirements are not eligible; addressing stormwater above and beyond the permit requirements may be eligible.
 - A project workplan is needed soon after project award notification.
 - Work cannot begin and funding is not available until a contract with DEEP is executed.
 - Recent awards range between \$70,000 - \$600,000. There are no restrictions on the funding amount requested in the application.



Christopher Field

Department of Energy and Environmental Protection

Director, Office of Planning and Resilience

DEEP Climate Resilience Fund (DCRF)

DEEP Climate Resilience Fund (DCRF)



- **What does your program fund with?**
 - *Community* resilience planning, design, and matching funds
- **What are the priorities for your next funding cycle?**
 - Projects that build community resilience, including critical municipal infrastructure, nature-based solutions, energy infrastructure, and local financing mechanisms (e.g., Resiliency Improvement Districts), among others
- **When is the funding available?**
 - Notice of Funding Opportunity typically released in the fall

DEEP Climate Resilience Fund (DCRF)



- **How much \$ is available?**
 - \$20M for resilience planning, design, and matching funds
 - \$24M for energy resilience construction projects
- **Are there match requirements?**
 - Funds for construction are provided as match for federal grants (state funds are 10 – 25% of the total project cost)
- **Who is eligible?**
 - Municipalities, non-profits, state and federal Tribal nations, and others



LONG ISLAND SOUND
PARTNERSHIP

10 Minute Stretch Break

Please return by 11:15



West Haven, CT
Credit: Sarah Schechter

Land Use & Acquisition





Kimberly Bradley

CT Department of Energy and Environmental Protection, Bureau of Outdoor Recreation

CT Trails and Greenway Program Coordinator, Division of State Parks & Public Outreach

Connecticut Recreational Trails Grant Program

CT Recreational Trails Grant Program



- **Established in 2015**
- **What does your program fund?**
 - Planning and design and construction of new trails;
 - Maintenance and restoration of existing trails;
 - Acquisition of land or easements for a trail, or for trail corridors;
 - Educational programs
- **What are the priorities for your next funding cycle?**
 - Community connectivity
 - Increased Accessibility
 - Distressed Municipalities/Environmental Justice

CT Recreational Trails Grant Program



- **When is the funding available?**
 - Based on Bond Commission, Anticipate Fall/Winter 2026
- **How much \$ is available?**
 - ~ \$10-15 million 2026; (\$30 million authorized in State Budget for 2025-26 and 2026-27 rounds)
- **Are there match requirements?**
 - 20% Match Requirement;
 - Match Accepted 18 month prior to award notification
 - Can include In-Kind and Volunteer Hours
- **Who is eligible?**
 - Nonprofits, Municipalities, COGs, Tribal Governments, Educational Institutions

CT Recreational Trails Grant Program



- **Three things applicants should keep in mind:**
 1. Projects need to address trails as the primary focus!
 2. Planning/ Design projects can/should include environmental review information and public outreach within the scope.
 3. Projects **NEED** to have access and approval, even on state lands.
- **Other things new applicants should know about this funding opportunity:**
 - CT Recreational Grant Guidelines and an interactive Story Map Tool can be found here: <https://portal.ct.gov/DEEP/Business-and-Financial-Assistance/Grants-Financial-Assistance/CT-Recreational-Trails>



Lindsay Suhr

Connecticut Department of Energy and Environmental Protection

Office Director, Land Acquisition and Management

Open Space & Watershed Land Acquisition Grant (OSWA)

Urban Green & Community Garden Grant (UGCG)

Open Space & Watershed Land Acquisition Grant



- **What does your program fund?**
 - Purchase of permanent interests in land
- **What are the priorities for your next funding cycle?**
 - 4 main areas for scoring:
 1. Administrative
 2. Public Access & Outdoor Recreation
 3. Environmental Justice & Equity
 4. Climate Change & Natural Resources
- **When is the funding available?**
 - Next round will open end of May/early June
- **How much \$ is available?**
 - Based on appraisal price of property
- **Are there match requirements?**
 - Up to 65% or 75% of fair market value price covered depending on location
- **Who is eligible?**
 - Municipalities, non-profit conservation organizations & water companies

Additional Guidance -OSWA



- **Three things applicants should keep in mind:**
 - Need an appraisal and appraisal review for application
 - Should work on a purchase and sale agreement with current property owner
 - The process can be complicated and take quite some time

Contact us if you have questions –

Allyson Clarke – Allyson.Clarke@ct.gov or 860-424-3774

Urban Green & Community Gardens Grant



- **What does your program fund?**

- Creation, enhancement or restoration of urban green space: green infrastructure, community gardens, passive recreational trails etc.

- **What are the priorities for your next funding cycle?**

- Community Impact – who is this going to benefit and how? Who has been part of project building?

- **When is the funding available?**

- Next round will open end of May/early June

- **How much \$ is available?**

- No upper limit on request, but can only be 20% of yearly grants from OSWA/UGCG pool of funding

- **Are there match requirements?**

- 50 %

- **Who is eligible?**

- Non-profits or Municipalities in Distressed Municipality, Environmental Justice Community or Targeted Investment Community

Additional Guidance -UGCG



- **Three things applicants should keep in mind:**
 - Volunteer hours/donated materials count as match
 - The project can be used for a portion of a larger park improvement project
 - Cannot be used to pay for park infrastructure – playgrounds, ball fields, courts, etc.

Contact us if you have questions –

Cameron Clegg – Cameron.clegg@ct.gov or 860-424-3118

Yaw Darko

Connecticut Land Conservation Council (CLCC)

Director, Grants & Programs

CLCC Financial Assistance Programs

- Transaction Assistance Grant Program (TAG)**
- Connecticut Conservation Partnership Program (CCPP)**
- Land & Easement Acquisition Program (LEAP)**
- Forever Connecticut Fund (FCF)**
- Forest Stewardship Grants**

Transaction Assistance Grant Program (TAG)

- **What does your program fund/assist with?**
 - Transaction related project costs (e.g., appraisals; title work; surveys; ESAs; recording fees)
- **What are the priorities for your current funding cycle?**
 - Potential acquisitions; acquisitions in progress; acquisitions near completion
- **When is the funding available?**
 - Annual program with applications due at the end of each month

Transaction Assistance Grant Program (TAG)

- **How much \$ is available?**
 - 2026: \$175,000
- **Are there match requirements?**
 - 20% cash match for projects not being submitted for state or federal funding.
- **Who is eligible?**
 - CLCC member land trusts

Connecticut Conservation Partnership Program (CCPP)

- **What does your program fund/assist with?**
 - Purchase of 2 types of conservation easements (CEs)
 - Easements can be held by USDA-NRCS (U.S. Held Easements) or an eligible entity (Entity Held Easements)
- **What are the priorities for your current funding cycle?**
 - CEs on nonindustrial private forest and watershed lands
- **When is the funding available?**
 - Available now through 2027

Connecticut Conservation Partnership Program (CCPP)

- **How much \$ is available?**
 - \$5.5 million
- **Are there match requirements?**
 - Depends on the chosen easement
- **Who is eligible?**
 - CLCC member land trusts; private landowners

Land & Easement Acquisition Program (LEAP)

- **What does your program fund/assist with?**
 - Purchase price of land and conservation easement acquisitions
- **What are the priorities for your current funding cycle?**
 - Projects leveraging other funding sources; closing within 12 months or less; protecting ecologically significant lands; strengthening landscape connectivity; and demonstrating strong community benefit
- **When is the funding available?**
 - Upcoming application deadlines: 4/1; 6/1; and 8/1

Land & Easement Acquisition Program (LEAP)

- **How much \$ is available?**
 - 2026: ~\$2.8 million
- **Are there match requirements?**
 - N/A*
- **Who is eligible?**
 - CLCC member land trusts

Forever CT Fund (FCF)

- **What does your program fund/assist with?**
 - Provides bridge loans for land and easement acquisitions
- **What are the priorities for your current funding cycle?**
 - Help land trusts act quickly on conservation opportunities
 - Enable protection of high-priority conservation lands
 - Strengthen land trusts' financial and organizational capacity
 - Maximize conservation impact by recycling capital over time
- **When is the funding available?**
 - Launch: March 2026

Forever CT Fund (FCF)

- **How much \$ is available?**
 - \$1.5 million
- **Are there match requirements?**
 - N/A*
- **Who is eligible?**
 - CLCC member land trusts

Forest Stewardship Grants

- **What does your program fund/assist with?**
 - Implementation of resilient forestry practices
- **What are the priorities for your next funding cycle?**
 - Implementation of practices that contribute to climate mitigation, adaptation, or resilience
- **When is the funding available?**
 - Upcoming application deadline: 4/30; more deadlines TBA pending available funds

Forest Stewardship Grants

- **How much \$ is available?**
 - \$500,000
- **Are there match requirements?**
 - N/A*
- **Who is eligible?**
 - CLCC member land trusts in U.S. Forest Service designated rural municipalities (pop. < 50,000)

- **Technical assistance is provided to applicants across all programs from project ideation to implementation.**



LONG ISLAND SOUND
PARTNERSHIP

Capital Projects & Brownfields





Almariet Roberts

**Dept. of Economic & Community Development
Outreach and Applications Supervisor
Office of Community Development**

Almariet.Roberts@ct.gov

860.500.2383

Community Investment Fund 2030



- **What does your program fund?**

- Capital Projects
- Planning

- **What are the priorities for your next funding cycle?**

- Grants further consistent and systematic fair, just and impartial treatment of all individuals, including individuals who belong to underserved and marginalized communities that have been denied such treatment.

- **When is the funding available?**

- At least twice annually through 2026; Spring and Fall

- **How much \$ is available?**

- Up to \$676,000,000; max \$121,000,000/year, 2025/26
- Min. request is \$250,000. Min. Capital budget is \$1,500,000. Planning Grants are \$250,000. CIF request amount is unlimited.

- **Are there match requirements?**

- No match required

- **Who is eligible?**

- Municipalities, Non-profits, and Community Development Corporations serving Public Investment Communities, Alliance Districts or Distressed Communities (currently 57 municipalities)

Brownfield Remediation/ Limited Assessment Grant



- **What does your program fund?**
 - Brownfield cleanup, limited investigation
- **What are the priorities for your next funding cycle?**
 - Maximize impact of brownfield funding and programs
- **When is the funding available?**
 - Competitive rounds/2 x year
- **How much \$ is available?**
 - Remediation grant max - \$6m
- **Are there match requirements?**
 - None
- **Who is eligible?**
 - Municipalities/ EDAs/COGs/CT Brownfield Landbanks

Brownfield Remediation/ Limited Assessment Loan



- **What does your program fund?**
 - Brownfield cleanup, limited investigation
- **What are the priorities for your next funding cycle?**
 - Maximize impact of brownfield funding and programs
- **When is the funding available?**
 - Competitive rounds/2 x year
- **How much \$ is available?**
 - Remediation loan max - \$6m
- **Are there match requirements?**
 - **10% match**
- **Who is eligible?**
 - Municipalities/ EDAs/COGs/CT Brownfield Landbanks
 - **Private developers**

Brownfield Assessment-only Grant



- **What does your program fund?**
 - **Brownfield investigation**
- **What are the priorities for your next funding cycle?**
 - Have a pipeline of potential brownfield projects
- **When is the funding available?**
 - Competitive rounds/2 x year
- **How much \$ is available?**
 - **\$200K**
- **Are there match requirements?**
 - No
- **Who is eligible?**
 - Municipalities/ EDAs/COGs/CT Brownfield Landbanks

Brownfield Area-wide Planning Grant



- **What does your program fund?**
 - **Planning activities**
- **What are the priorities for your next funding cycle?**
 - Comprehensive planning
- **When is the funding available?**
 - Competitive rounds/2 x year
- **How much \$ is available?**
 - \$200K
- **Are there match requirements?**
 - **10%**
- **Who is eligible?**
 - Municipalities/ EDAs/COGs/CT
Brownfield Landbanks



Additional Guidance

- **The most important tip for success:**
 - Public/private partnerships; shovel-ready projects; intentional, transformational projects
- **Other things new applicants should know about this funding opportunity:**
 - Brownfield Resources– www.ctbrownfields.gov; Hotline #: 1.860.500.2395; join mailing list
 - CIF resources: www.portal.ct.gov/communityinvestmentfund and communityinvestmentfund@ct.gov



Amanda R. Limacher

Bureau of Water Protection and Land Reuse – Remediation Division

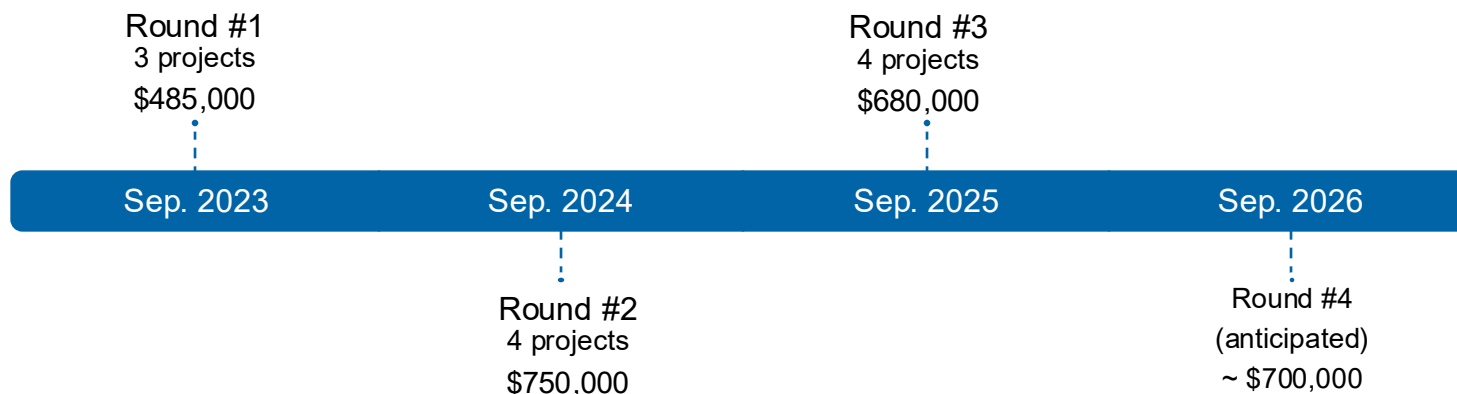
Brownfields Coordinator

CT DEEP CERCLA 128(a) Brownfield Grant Program



CT DEEP CERCLA 128(a) Brownfield Grant Program

- **What does your program fund/assist with?**
 - Environmental assessment and cleanup activities at brownfield sites
- **What are the priorities for your next funding cycle?**
 - Projects must be shovel ready
- **When is the funding available?**





CT DEEP CERCLA 128(a) Brownfield Grant Program

- **How much \$ is available?**
 - ~\$700,000 available
 - Up to \$250,000 for assessment
 - Up to \$250,000 for remediation
- **Are there match requirements?**
 - No Match Required
- **Who is eligible?**
 - Non-profit Organizations and Municipalities

Contact Information



- Amanda Limacher, Brownfields Coordinator
amanda.limacher@ct.gov

- Brownfields Program
DEEP.brownfields@ct.gov



LONG ISLAND SOUND
PARTNERSHIP

Technical Assistance & Support



Randi Mendes, Ph.D.

UConn Technical Assistance to Brownfields (UConn TAB)

UConn TAB – Executive Director
Environmental Engineer

UConn TAB Technical Assistance & Grant Support

Email: Uconn-tab@uconn.edu

Website: Tab.program.uconn.edu

LinkedIn: <https://www.linkedin.com/in/uconn-tab/>

Mailing List: Website

DIRECT TECHNICAL ASSISTANCE

RESPONSIVE, ACCESSIBLE, AND EXPERT REFERRALS



Direct Technical Assistance

Municipal Assistance Program

Continuing Education

Community Engagement

Technical Document Review

- Review of Environmental Site Assessment Reports, Remedial Action Plans, Planning Documents

Brownfields Proposals Review

- EPA Brownfields proposals (assessment, cleanup, multipurpose, RLF) and State Program proposals

Access to Resources & Procurement Support

- Fact sheets, example proposals, RFQ/RFP review, and documents

Online Office Hours

- Answer Technical Questions

MAP - SERVICE LEARNING COURSE

STRONG COMMUNITY PARTNERSHIPS & COLLABORATIONS

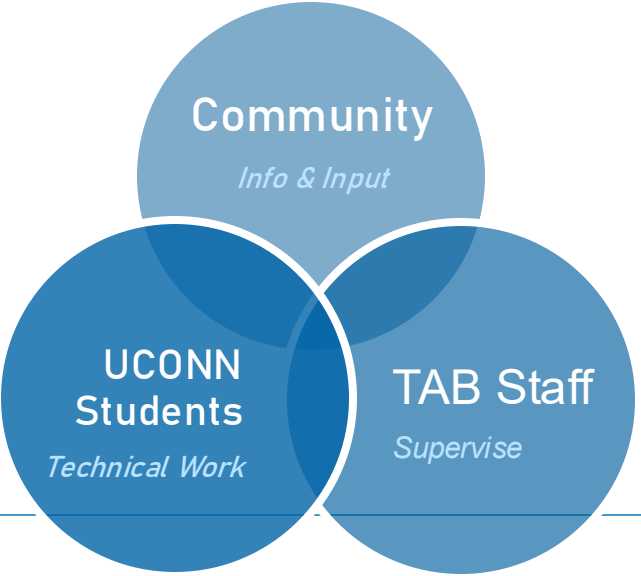


- Direct Technical Assistance
- Municipal Assistance Program
- Continuing Education
- Community Engagement



EPA Brownfields Grant Support

TECHNICAL SUPPORT



Target Area and Brownfield Site Description

Community Need (Demographics, EJSCREEN data)

Brownfield inventories

Data Review and Gap Analysis for brownfield sites

Grant Preparation

Site reuse planning

Community Engagement Planning and Materials



CONTINUING EDUCATION

CO-LEARNING



Direct Technical Assistance

Municipal Assistance Program

Continuing Education

Community Engagement

PREVIOUS WEBINARS

- **Apr 16th** Using Brownfield Funding for Local Planning (A Planner's Perspective)
- **May 1st** Planning for a Successful Fall EPA Brownfield Grant Application: Don't Wait Until September!
- **June 18th** – Environmental Communication Strategies for Developing Health Literacy
- **July 9th** – Strategies to Spark Community Involvement
- **July 30th** – Engaging Rural Healthcare Providers in Brownfields
- **Dec 10th** – Rural Communities and Funding Opportunities
- **Dec 17th** – Data Mining for Health Impacts for MAC Grants

UConn TAB Upcoming Webinars

- FEB 26th** Talk Nerdy to Me: Promoting Strong Science Comm
- MAR 18th** Building Relationships with CBOs
- MAR 25th** Meet Your Job Training and RLF TA Providers
- APR 1st** Community Engagement Resources
- APR 29th** Best Practices for Communicating Grant Progress
- MAY 13th** Community Specific Brownfield Risk Communication
- JUN 10th** Brownfield Developers Panel
- JUL 8th** Let's Talk about Liability and Why We Do a Phase I



WEDNESDAYS

12:00 PM



VIRTUAL(WEBEX)



REGISTER

S.UCONN.EDU/26SPRINGWEBINAR



UCONN
REGION 1 TECHNICAL

ALL PREVIOUS WEBINARS HAVE BEEN RECORDED AND CAN BE FOUND ON OUR WEBSITE

COMMUNITY ENGAGEMENT

BREAKING DOWN BARRIERS AND CO-LEARNING



- Direct Technical Assistance
- Municipal Assistance Program
- Continuing Education
- **Community Engagement**

STAKEHOLDER ANALYSIS

This tool will help you find diverse stakeholders, explore who has the most power and influence in your community, and determine who has the most interest in your brownfields redevelopment project.

SWOT ANALYSIS

This tool allows you to examine the strengths, weaknesses, opportunities, and threats in your community as they relate to brownfields redevelopment and community engagement.

AFFORDABLE HOUSING

This tool is designed for municipal officials and nonprofit organizations. It provides different strategies for opening a dialogue and gaining buy-in for affordable housing from community members that are opposed to the idea.

LISTENING SESSIONS

This tool provides an overview what a listening session is, how to plan one for your community, and how they can support your brownfields redevelopment / community engagement goals.

COMMUNITY MEETING CHECKLIST

This tool provides a helpful checklist for planning a community meeting, hosting the actual event, and evaluation / follow-up once the meeting is over.

FOCUS GROUPS

This tool briefly summarizes focus groups and provides some guiding questions to help you get started in hosting one in your community.



Recent & Upcoming Activities



Summer MAP

- Applications due April 10th

Brownfield inventories

Record Review

Data Gap Analysis

Grant Preparation

Site reuse planning

Community Engagement Planning and Materials



Michelle Sophia Peedin (she/her)

Environmental Protection Network + New England Environmental Finance Center

Pro-Bono Funding Strategy & Capacity-Building Technical Assistance

New England Community Outreach Associate



- **What does your program assist with?**
 - Pro-Bono 1:1 Funding Strategy and Technical Assistance
- **What are the priority services?**
 - Fundraising Strategy Coaching
 - Organization Development & Capacity Building
 - Personalized Funding Opportunity Scans
 - Connect to EPA Alumni Expert Volunteer Network
 - Practical Resources, Regional Partnerships, and Tailored Feedback



- **How much does it cost?**
 - FREE
- **How to access services?**
 - [Linked Technical Assistance Request form](#)
 - [Environmental Funding Navigator](#)
- **Who is eligible?**
 - Low-Capacity Environmental and Frontline Communities, NGOs, Tribes, and Under-Resourced Government Agencies



Lunch

12:00-12:45 PM





Successful Awardees Panel:

*Town of Groton –
Sabit Nasir and Megan Granato*

*Southwest Conservation District –
Chris Sullivan*

*City of Norwalk –
Michelle Andrejewski*



Roundtable Discussions 1:15-2:15 PM





Thank you



Please complete our short evaluation!

